

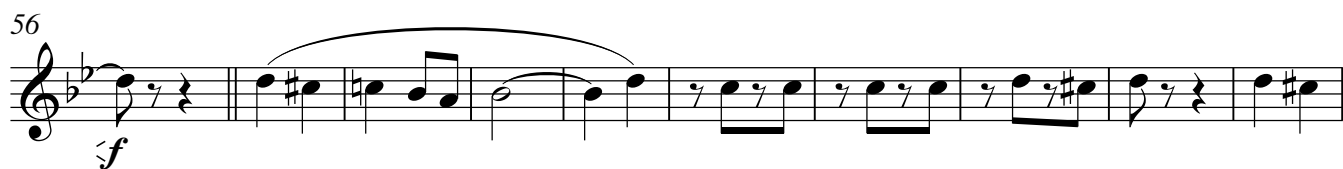
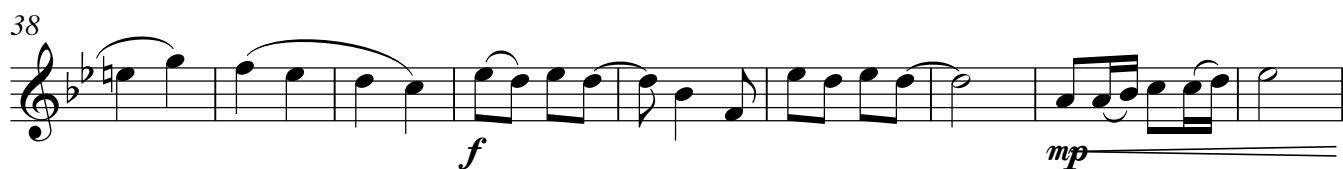
Horn in F

ПОЛЬКА

А. ШОР

ALLEGRO CON MOTO ♩ = 140

4



2

Horn in F

82

89 **poco ascelerando**

f *p*

p *f*

Trombone

ПОЛЬКА

А. ШОР

ALLEGRO CON MOTO $\text{♩} = 140$

4

Measures 1-12 of the Trombone part. The music is in bass clef, 2/4 time, and B-flat major. It begins with a four-measure rest, followed by quarter notes G2, A2, B2, and C3. A repeat sign follows, then a series of eighth notes: G2, A2, B2, C3, D3, E3, F3, G3, A3, B3, C4, D4, E4, F4, G4, A4, B4, C5. A fermata is placed over the final C5.

Measures 13-22. Measure 13 starts with a fermata over G2. The melody continues with quarter notes A2, B2, C3, D3, E3, F3, G3, A3, B3, C4, D4, E4, F4, G4, A4, B4, C5. A first ending bracket covers measures 19-22, ending with a repeat sign. Dynamics: *mp poco cresc.*

Measures 23-29. Measure 23 starts with a fermata over G2. The melody continues with quarter notes A2, B2, C3, D3, E3, F3, G3, A3, B3, C4, D4, E4, F4, G4, A4, B4, C5. Dynamics: *mf*

Measures 30-36. Measure 30 starts with a fermata over G2. The melody continues with quarter notes A2, B2, C3, D3, E3, F3, G3, A3, B3, C4, D4, E4, F4, G4, A4, B4, C5. Dynamics: *mp*

Measures 37-45. Measure 37 starts with a fermata over G2. The melody continues with quarter notes A2, B2, C3, D3, E3, F3, G3, A3, B3, C4, D4, E4, F4, G4, A4, B4, C5. Dynamics: *f* and *mp*

Measures 46-51. Measure 46 starts with a fermata over G2. The melody continues with quarter notes A2, B2, C3, D3, E3, F3, G3, A3, B3, C4, D4, E4, F4, G4, A4, B4, C5. Dynamics: *f*

Measures 52-56. Measure 52 starts with a fermata over G2. The melody continues with quarter notes A2, B2, C3, D3, E3, F3, G3, A3, B3, C4, D4, E4, F4, G4, A4, B4, C5. Dynamics: *mp* and *f*

Measures 57-60. Measure 57 starts with a fermata over G2. The melody continues with quarter notes A2, B2, C3, D3, E3, F3, G3, A3, B3, C4, D4, E4, F4, G4, A4, B4, C5. A second ending bracket covers measures 58-60, ending with a repeat sign. Dynamics: *f*

2

Trombone

59

59

70

70

mp

78

78

f *mp*

86

86

f *p* *p*

⌘ *poco ascelerando*

92

92

f

Trumpet in B \flat

ПОЛЬКА

А. ШОР

ALLEGRO CON MOTO $\text{♩} = 140$

8

15

24

33

42

49

57

66

75

f *p* *mf*

mp *f*

mp poco cresc. *f*

f *p* *mf* *mp* *f*

f *subito p* *f*

mp *f*

mp *f* *p*

mf *f*

mf *p* *mf* *p*

V.S.

2

Trumpet in B \flat

83

mf *f* *p* *p*

89 **poco ascelerando**

f

Trumpet in B \flat

ПОЛЬКА

А. ШОР

ALLEGRO CON MOTO $\text{♩} = 140$

2 ♩

8 mf

15 mp *poco cresc.* f 1.

24 f p mf mp f

33 f *subito p* f

41 mp

48 mp

56 f p f

65 p mf f

74 mf p mf p V.S.

2

Trumpet in B \flat

82

mf *f* *p* *p*

89

Poco ascelerando

f

Tuba

ПОЛЬКА

А. ШОР

ALLEGRO CON MOTO ♩ = 140

4



9

mf

15

23

mp poco cresc.

1.

31

mf

40

48

56

64

72

V.S.

2

Tuba

80

80

mp *f*

88

88

p *poco ascelerando* *p*

92

92

f