

Prelude and Fugue in C minor

J.S. Bach (1685-1750),
arr. Dave Taylor

1st Trumpet in B \flat
[♩ = c.80]

7 Trom. Play *ff*

10 *mf*

14

18

22 *mf*

25 *mp* *p* [rit.]

29 Fugue [♩ = c.100] 12 *pp* *mf*

44 *tr* 3

50 *p*

52

54 *tr*

2

1st Trumpet in B \flat

57 6

mf

66

p

69

ff sub.

72

75

77

80

83

85 [Meno mosso; $\text{♩} = \text{c.60}$]

Hn.

86 *Play* [molto rit. al fine]

mf

87 (Tpt. 2) *Play* etc.

mp *p*

Prelude and Fugue in C minor

J.S. Bach (1685-1750),
arr. Dave Taylor

2nd Trumpet in B \flat
[♩ = c.80]

8 Cor. 1 Play

ff *mf*

12

16

20 *mf*

23 *mp* *p*

27 [rit.] Fugue [♩ = c.100]

pp 16

46 *mf*

49 *p* 2

53 *p* Play

Trom.

56 *mf*

59

2

2nd Trumpet in B \flat

61

p

63

65

69

ff sub.

72

76

78

81

[Meno mosso; ♩ = c.60]

3

86

[molto rit. al fine]

Tpt. 1

tr

87

mp

Play

(Tpt. 1)

88

Hn.

p

Play

Prelude and Fugue in C minor

Horn in F

J.S. Bach (1685-1750),

arr. Dave Taylor

[♩ = c.80]

8 Tpt. 1 Play *f* *mf*

12 3

19 *mf*

23 *mp* *p*

28 [rit.] Fugue [♩ = c.100] *pp* *mf*

39 *tr* *tr*

42

45

48 *p* 5

57 *mf*

60 *p*

2

Horn in F

63



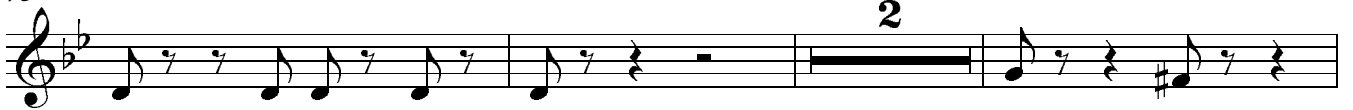
67



71



75



80



82



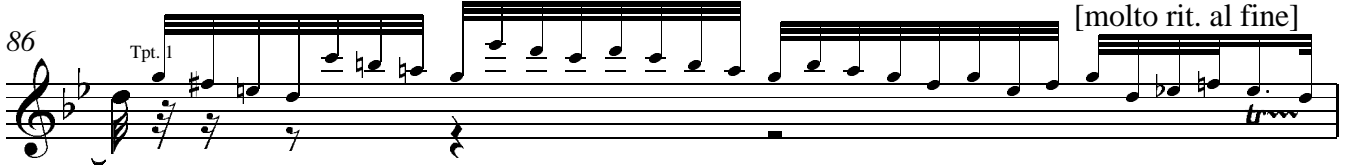
84

[Meno mosso; ♩ = c.60]



86

[molto rit. al fine]



87



Prelude and Fugue in C minor

Trombone

J.S. Bach (1685-1750),
arr. Dave Taylor

[♩ = c.80]

ff

4

6

8

mp *f* *mf*

13

18

mf

23

mp *p*

27

[rit.] Fugue [♩ = c.100]

pp *mf*

35

(tr) (tr)

38

42

3

50

p

2

Trombone

53

mp

56

(trm) 4 *mp*

63

p

66

ff sub.

70

73

76

2

81

2 *sempre ff*

[Meno mosso; ♩ = c.60]

86

[molto rit. al fine] *trm*

Tpt. 1

87

(cues 8va) (Tpt. 1) (Tpt. 2) Hn. Tpt. 2 *mp* Play *p*

Prelude and Fugue in C minor

Tuba

J.S. Bach (1685-1750),

arr. Dave Taylor

[♩ = c.80]

ff

4

6

8

mp

14

mf

22

mf

29

Fugue [♩ = c.100]

pp

32

mf

35

38

42

Trom.

ff

19

6

2

Tuba

70

72

74

79

81

[Meno mosso; ♩ = c.60]

2

sempre ff

86

Tpt. 1

[molto rit. al fine]

trm

87

(cues 8va)

(Tpt. 1)

Tpt. 2

mp
Play

88

Hn.

Tpt. 2

Trom.

p
Play