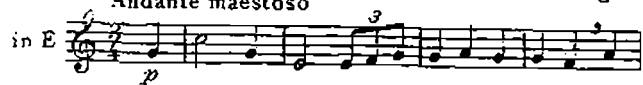


Horn I in F

Pilgerchor aus „Tannhäuser“

Andante maestoso

Richard Wagner



(3. Horn)



(3 Horn)



Horn II in F

Pilgerchor aus „Tannhäuser“

Andante maestoso

Richard Wagner

in E

Musical score for Horn II in F, first system. It consists of six staves of music. The first staff starts with a piano (*p*) dynamic and includes a first ending bracket. The second staff continues the melody. The third staff has a circled '1' and a piano (*p*) dynamic. The fourth staff has a circled '2' and a *p cresc.* dynamic marking. The fifth staff has a *mf* dynamic marking. The sixth staff has a circled '3' and a piano (*p*) dynamic marking.

Horn II in F

Musical score for Horn II in F, second system. It consists of six staves of music. The first staff starts with a mezzo-forte (*mf*) dynamic and ends with a piano (*p*) dynamic. The second staff has circled '4' and '5' and a fortissimo marcato (*ff marcato*) dynamic marking. The third staff continues the melody. The fourth staff has a circled '6' and a fortissimo (*ff*) dynamic marking. The fifth staff has a circled '7', a *breit* marking, and a marcato dynamic marking. The sixth staff has a circled '8' and a *dim.* dynamic marking.

Horn III in F

Pilgerchor aus „Tannhäuser“

Andante maestoso Richard Wagner

in E

p

3

①

p

Solo ②

cresc.

mf

p

Solo ③

p

cresc.

Horn III in F

mf

④

p

⑤

ff marcato

3

⑥

8

⑦

ff

breit

marcato

⑧

dim.

Horn IV in F

Pilgerchor aus „Tannhäuser“

Andante maestoso

Richard Wagner

in E

Musical score for Horn IV in F, Pilgerchor aus „Tannhäuser“ by Richard Wagner. The score is in bass clef with a key signature of one flat (B-flat). It consists of eight staves of music. The first staff is marked *p* and has a *3* above it. The second staff has a *3* above it. The third staff has a circled *1* above it. The fourth staff has a *p* below it. The fifth staff has a circled *2* above it and *cresc.* below it. The sixth staff has *-mf* below it and a *p* below it. The seventh staff has a circled *3* above it. The eighth staff has a circled *3* above it.

Horn IV in F

Musical score for Horn IV in F, Pilgerchor aus „Tannhäuser“ by Richard Wagner. The score is in bass clef with a key signature of one flat (B-flat). It consists of eight staves of music. The first staff is marked *mf* and *p*. The second staff has a circled *4* above it and *ff* below it. The third staff has a circled *5* above it and *3* above it, with *marcato* below it. The fourth staff has a circled *6* above it. The fifth staff has a circled *6* above it. The sixth staff has a circled *7* above it and *ff marcato* below it. The seventh staff has *breit* above it. The eighth staff has a circled *8* above it and *dim.* below it.