

# American Panorama

Seven Pieces in the American Folk Idiom

- |                                  |                         |
|----------------------------------|-------------------------|
| I. Sea Chanty Fantasy            | IV. Blues Episode       |
| II. Tune from the Western Plains | V. Morning on the Range |
| III. Creole Dance                | VI. Borderland Serenade |
| VII. Swing Your Partners         |                         |

Quartet for

4 Violins; 4 Trumpets in B $\flat$ ; 4 Clarinets in B $\flat$ ; 4 Horns in F; or 4 Saxophones

1st Part

GEORGE FREDERICK McRAY

## I. Sea Chanty Fantasy

*Allegro giocoso*

Musical score for 'I. Sea Chanty Fantasy' in 4/4 time, key of G major. The score consists of five staves of music. The first staff begins with a treble clef, a key signature of one sharp (F#), and a 4/4 time signature. It starts with a forte (*f*) dynamic and a repeat sign. The second staff has a first ending bracket labeled '1' and a piano (*p*) dynamic. The third staff has a second ending bracket labeled '2' and a mezzo-forte (*mf*) dynamic. The fourth staff has a third ending bracket labeled '3' with the instruction 'more lyric' and a mezzo-forte (*mf*) dynamic. The fifth staff has a fourth ending bracket labeled '4' with the instruction 'Vigorous' and a forte (*f*) dynamic. The piece concludes with a double bar line, a repeat sign, and the instruction 'D.S. al Fine'.

## II. Tune from the Western Plains

*Lento espressivo*

Musical score for 'II. Tune from the Western Plains' in 4/4 time, key of G major. The score consists of two staves of music. The first staff begins with a treble clef, a key signature of one sharp (F#), and a 4/4 time signature. It starts with a mezzo-forte (*mf*) dynamic and features a triplet of eighth notes. The second staff continues the melody with a mezzo-forte (*mf*) dynamic and includes a triplet of eighth notes. The piece concludes with a double bar line, a repeat sign, and the instruction 'D.C. al Fine'.

2

1st Part

### III. Creole Dance

Alleretto ritmico (*dance-like*)

*mf*

8

9

Meno mosso

*p dolce*

10

3

3

3

3

11

12

*Fine*

*D.C. al Fine*

Detailed description: This section contains four staves of music. The first staff starts with a treble clef, a key signature of one flat, and a 3/4 time signature. It features a melody with eighth and sixteenth notes, marked *mf*. A circled number 8 is above the staff. The second staff continues the melody, marked *Fine*. The third staff is marked *Meno mosso* and *p dolce*, featuring triplets of eighth notes. A circled number 10 is above the staff. The fourth staff continues the triplet pattern, marked with circled numbers 11 and 12, and ends with *D.C. al Fine*.

### IV. Blues Episode

Andante moderato (*rubato*)

*mf*

*sempre simile*

13

*f espressivo*

*un poco rit.*

*Fine*

Più mosso

*mf espressivo*

14

*dim. e rit.*

*D.C. al Fine*

Detailed description: This section contains four staves of music. The first staff is marked *Andante moderato (rubato)* and *mf*, with a melody of quarter notes. The second staff continues the melody, marked *f espressivo* and *un poco rit.*, with a circled number 13. The third staff is marked *Più mosso* and *mf espressivo*, with a circled number 14. The fourth staff continues the melody, marked *dim. e rit.* and *D.C. al Fine*.

## V. Morning on the Range

3

### 1st Part

*Andantino con moto*



15



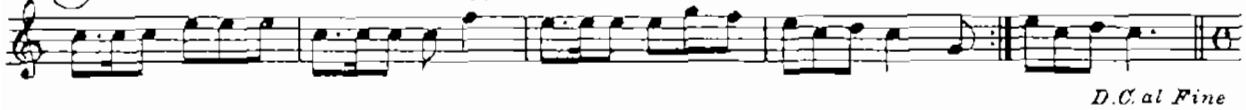
16



*Allegro*



17



## VI. Borderland Serenade

*Moderato grazioso*



18



19



20



4

## VII. Swing Your Partners

## 1st Part

Lively and rhythmic

*f sempre*

(21)

(22) *Giacoso*

*mf*

(23)

(24)

(25) *f*

(26)

# American Panorama

Seven Pieces in the American Folk Idiom

- |                                  |                         |
|----------------------------------|-------------------------|
| I. Sea Chanty Fantasy            | IV. Blues Episode       |
| II. Tune from the Western Plains | V. Morning on the Range |
| III. Creole Dance                | VI. Borderland Serenade |
| VII. Swing Your Partners         |                         |

Quartet for

4 Violins; 4 Trumpets in B $\flat$ ; 4 Clarinets in B $\flat$ ; 4 Horns in F; or 4 Saxophones

2nd Part

GEORGE FREDERICK MCKAY

## I. Sea Chanty Fantasy

*Allegro giocoso*

Musical score for "I. Sea Chanty Fantasy" in 4/4 time, marked *Allegro giocoso*. The score consists of five staves of music. The first staff begins with a forte (*f*) dynamic and a repeat sign. The second staff features a first ending marked with a circled 1 and a *p* dynamic. The third staff starts with a *mf* dynamic and a circled 2. The fourth staff is marked "more lyric" and *mf*, with a circled 3 and a first ending marked with a circled 1 and a second ending marked with a circled 2. The fifth staff is marked "Vigorous" and *f*, with a circled 4 and a repeat sign. The piece concludes with the instruction "D.S. al Fine".

## II. Tune from the Western Plains

*Lento espressivo*

Musical score for "II. Tune from the Western Plains" in 4/4 time, marked *Lento espressivo*. The score consists of two staves of music. The first staff begins with a *mf* dynamic and a circled 5, leading to a first ending marked with a circled 1 and a second ending marked with a circled 2. The piece concludes with the instruction "Fine". The second staff starts with a circled 8 and a first ending marked with a circled 1, followed by a circled 7. The piece concludes with the instruction "D.C. al Fine" and a *rit.* marking.

2  
2nd Part

### III. Creole Dance

Allegretto ritmico (*dance-like*)

8

*mf* *sempre*

1 2

9

*Fine*

Meno mosso

10

*p dolce*

11 12

3

*D.C. al Fine*

Detailed description: This section contains the musical notation for 'Creole Dance'. It consists of four staves of music in 7/8 time. The first staff starts with a circled measure number 8 and includes dynamic markings 'mf' and 'sempre', and first/second endings. The second staff ends with 'Fine'. The third staff begins with 'Meno mosso' and 'p dolce', and includes measure numbers 10 and 11. The fourth staff includes measure numbers 12 and 13, a triplet of eighth notes, and ends with 'D.C. al Fine'.

### IV. Blues Episode

Andante moderato (*rubato*)

*mf* *sempre simile*

13

*un poco rit.* *Fine*

Più mosso

14

*dim e rit.* *D.C. al Fine*

3

Detailed description: This section contains the musical notation for 'Blues Episode'. It consists of four staves of music in 4/4 time. The first staff starts with 'Andante moderato (rubato)' and 'mf sempre simile'. The second staff includes measure number 13. The third staff ends with 'un poco rit.' and 'Fine'. The fourth staff begins with 'Più mosso' and includes measure number 14, a triplet of eighth notes, and ends with 'dim e rit.' and 'D.C. al Fine'.

# V. Morning on the Range

## 2nd Part

Andantino con moto

4

*p dolce* *mf marcato*

15

*f* *dim.* *rit* *p* *Fine*

Allegro

*mf con moto*

17

*D.C. al Fine*

# VI. Borderland Serenade

Moderato grazioso

*p* *p* *3* *3*

18

*mf*

19

*f* *3 appass*

*p* *3* *3* *Fine*

20

*mf* *3* *3* *3* *1* *2* *D.C. al Fine*

# VII. Swing Your Partners

## 2nd Part

Lively and rhythmic





# American Panorama

Seven Pieces in the American Folk Idiom

- |                                  |                         |
|----------------------------------|-------------------------|
| I. Sea Chanty Fantasy            | IV. Blues Episode       |
| II. Tune from the Western Plains | V. Morning on the Range |
| III. Creole Dance                | VI. Borderland Serenade |
| VII. Swing Your Partner          |                         |

Quartet for

4 Violins; 4 Trumpets in B $\flat$ ; 4 Clarinets in B $\flat$ ; 4 Horns in F; or 4 Saxophones

3rd Part

GEORGE FREDERICK McKAY

## I. Sea Chanty Fantasy

*Allegro giocoso*

Musical score for 'I. Sea Chanty Fantasy' in 4/4 time, key of G major. The score consists of five staves of music. The first staff begins with a treble clef, a key signature of one sharp (F#), and a 4/4 time signature. It starts with a forte (*f*) dynamic and includes a first ending bracket. The second staff continues the melody with a piano (*p*) dynamic and a first ending bracket. The third staff features a mezzo-forte (*mf*) dynamic and a first ending bracket. The fourth staff is marked 'more lyrio' and begins with a mezzo-forte (*mf*) dynamic, featuring a first ending bracket. The fifth staff is marked 'Vigoroso' and begins with a forte (*f*) dynamic, ending with a first ending bracket and the instruction 'D.S. al Fine'.

## II. Tune from the Western Plains

*Lento espressivo*

Musical score for 'II. Tune from the Western Plains' in 4/4 time, key of B $\flat$  major. The score consists of two staves of music. The first staff begins with a treble clef, a key signature of two flats (B $\flat$ , E $\flat$ ), and a 4/4 time signature. It starts with a mezzo-forte (*mf*) dynamic and includes a first ending bracket. The second staff continues the melody with a *dim* (diminuendo) dynamic and a first ending bracket, ending with the instruction 'D.C. al Fine'.

2

3rd Part

### III. Creole Dance

*Allegretto ritmico (dance-like)*

8

1 2

*mf*

9

*Fine*

*Meno mosso*

10

1 3

*p*

11 12

3 3

*D.C. al Fine*

Detailed description: This section contains five staves of music. The first staff starts with a treble clef, a key signature of two flats, and a 3/4 time signature. It begins with a repeat sign and a circled measure number 8. The music consists of eighth and sixteenth notes. A first ending bracket spans measures 11 and 12, with a second ending bracket below it. The dynamic is *mf*. The second staff continues the melody with a circled measure number 9. The section ends with the word *Fine*. The third staff is marked *Meno mosso* and begins with a circled measure number 10. It features a first ending bracket over measures 10 and 11, and a second ending bracket over measures 12 and 13. The dynamic is *p*. The fourth staff continues with a circled measure number 11 and a triplet of eighth notes. The fifth staff ends with a circled measure number 12 and a triplet of eighth notes, followed by the instruction *D.C. al Fine*.

### IV. Blues Episode

*Andante moderato (rubato)*

*mf* *sempre simile*

13

*un poco rit.* *Fine*

*Più mosso*

14

*dim e rit* *D.C. al Fine*

Detailed description: This section contains five staves of music. The first staff has a treble clef, a key signature of two flats, and a 3/4 time signature. It begins with a circled measure number 13. The music is marked *mf* and *sempre simile*. The second staff continues the melody with a circled measure number 13. The third staff ends with a circled measure number 13 and the instruction *un poco rit.* followed by *Fine*. The fourth staff is marked *Più mosso* and begins with a circled measure number 14. The fifth staff continues the melody with a circled measure number 14, marked *dim e rit*, and ends with *D.C. al Fine*.

## V. Morning on the Range

3

### 3rd Part

Andantino con moto

Musical notation for the first system of 'Morning on the Range'. It consists of two staves. The first staff begins with a treble clef, a key signature of one sharp (F#), and a common time signature (C). It contains measures 8 and 15. The dynamics are marked *mf marcato*. The second staff continues from measure 16 and includes markings for *f*, *dim*, *rit*, *p*, and *Fine*.

Allegro

Musical notation for the second system of 'Morning on the Range'. It consists of two staves. The first staff begins with a treble clef, a key signature of one sharp (F#), and a 2/4 time signature. It contains measures 17 and 18. The dynamics are marked *mf con moto*. The second staff continues from measure 17 and includes first and second endings, marked *D.C. al Fine*.

## VI. Borderland Serenade

Moderato grazioso

Musical notation for the first system of 'Borderland Serenade'. It consists of five staves. The first staff begins with a treble clef, a key signature of one sharp (F#), and a 3/4 time signature. It contains measures 18 and 19. The dynamics are marked *p*. The second staff continues from measure 18 and includes first and second endings. The third staff continues from measure 18 and includes markings for *mf*, *f*, and *appass.*. The fourth staff continues from measure 18 and includes markings for *p* and *Fine*. The fifth staff continues from measure 18 and includes markings for *mf* and *D.C. al Fine*.

# VII. Swing Your Partners

## 3rd Part

Lively and rhythmic



# American Panorama

Seven Pieces in the American Folk Idiom

- |                                  |                         |
|----------------------------------|-------------------------|
| I. Sea Chanty Fantasy            | IV. Blues Episode       |
| II. Tune from the Western Plains | V. Morning on the Range |
| III. Creole Dance                | VI. Borderland Serenade |
| VII. Swing Your Partner          |                         |

Quartet for

4 Violins; 4 Trumpets in B $\flat$ ; 4 Clarinets in B $\flat$ ; 4 Horns in F; or 4 Saxophones

4th Part

GEORGE FREDERICK McKAY

## I. Sea Chanty Fantasy

*Allegro giocoso*

Musical score for the 4th part of 'I. Sea Chanty Fantasy'. The score is written on five staves in treble clef with a key signature of one flat (B $\flat$ ). It begins with a forte (*f*) dynamic and a tempo marking of *Allegro giocoso*. The first staff contains the initial melody. The second staff includes a first ending marked with a circled '1' and ends with a *Fine* marking. The third staff starts with a mezzo-forte (*mf*) dynamic and includes a second ending marked with a circled '2'. The fourth staff continues with a circled '3' and includes first and second endings. The fifth staff is marked *Vigoroso* and starts with a forte (*f*) dynamic, ending with a *D.S. al Fine* marking.

## II. Tune from the Western Plains

*Lento espressivo*

Musical score for the 4th part of 'II. Tune from the Western Plains'. The score is written on two staves in treble clef with a key signature of two flats (B $\flat$ , E $\flat$ ). It begins with a mezzo-forte (*mf*) dynamic and a tempo marking of *Lento espressivo*. The first staff contains the initial melody and includes a circled '5' above a measure. The second staff starts with a circled '6' and includes a circled '7' above a measure. The score concludes with a *din.* (diminuendo) marking and a *D.C. al Fine* marking.

### III. Creole Dance

#### 4th Part

Allegretto ritmic

*mf*

8

1 2

9

*Fine*

Men mosso

1

10

*p dolce*

11

12

*D.C. al Fine*

### IV. Blues Episode

Andante moderato

*mf* *espressivo*

13

*Fine*

Più mosso

14

*dun e rit*

*D.C. al Fine*

# 4th Part V. Morning on the Range

Andantino con moto

Musical notation for measures 15 and 16. Measure 15 starts with a circled '15' and a fermata over a whole note. Measure 16 starts with a circled '16' and continues with a melodic line. Dynamics include *mf marcato* and *f*. Performance markings include *dim.*, *rit.*, and *p Fine*.

Allegro

Musical notation for measures 17 and 18. Measure 17 starts with a circled '17' and features a rhythmic pattern. Measure 18 includes first and second endings. Dynamics include *mf con moto* and *D.C. al Fine*.

# VI. Borderland Serenade

Moderato grazioso

Musical notation for measures 18, 19, and 20. Measure 18 starts with a circled '18' and features triplets. Measure 19 includes first and second endings and ends with a circled '19'. Measure 20 starts with a circled '20' and features triplets. Dynamics include *p*, *mf*, and *f appassion.*. Performance markings include *Fine* and *D.C. al Fine*.

4

## VII. Swing Your Partners

4th Part

Lively and rhythmic

