

Альт 1

Пасодобль

из кинофильма "Карнавальная ночь"

Муз. А.Лепина
Инстр. М.Хавкина

1

2

3

4

f *mf* *f* *mf* *f* *p* *ff*

Альт 2

Пасодобль

из кинофильма "Карнавальная ночь"

Муз. А.Лепина
Инстр. М.Хавкина

1

1

2

3

4

f *mf* *f* *mf* *f* *p* *ff*

Баритон

Пасодобль

из кинофильма "Карнавальная ночь"

Муз. А.Лепина
Инстр. М.Хавкина

Musical score for Baritone, titled "Пасодобль" (Pasodoble) from the film "Карнавальная ночь" (Carnival Night). The score is in 3/4 time and B-flat major. It consists of ten staves of music. The first staff begins with a treble clef, a key signature of two flats, and a 3/4 time signature. The music features a series of eighth notes with accents (>) and a dynamic marking of *f*. The second staff starts with a first ending bracket and a dynamic marking of *mf*. The third staff contains a second ending bracket and a dynamic marking of *f*. The fourth staff has a dynamic marking of *f* and a first ending bracket. The fifth staff has a dynamic marking of *mf*. The sixth staff has a dynamic marking of *mf*. The seventh staff has a dynamic marking of *mf*. The eighth staff has a dynamic marking of *mf*. The ninth staff has a dynamic marking of *f*. The tenth staff has a dynamic marking of *f* and a first ending bracket. The score includes various musical notations such as accents, slurs, and dynamic markings.

Пасодобль

Бас 1

из кинофильма "Карнавальная ночь"

Муз. А.Лепина
Инстр. М.Хавкина

1

f

mf

2

f

3

mf

4

f

mf *p* *ff*

Бас 2

Пасодобль

из кинофильма "Карнавальная ночь"

Муз. А.Лепина

Инстр. М.Хавкина

1

f

mf

2

f

3

mf

4

f

mf *p* *ff*

Corno in Fa

Пасодобль

из кинофильма "Карнавальная ночь"

Муз. А.Лепина
Инстр. М.Хавкина

1

Musical score for Corno in Fa, featuring ten staves of music. The score includes various dynamics and markings:

- Staff 1: *f* (forte), *mf* (mezzo-forte)
- Staff 2: *f* (forte)
- Staff 3: *f* (forte)
- Staff 4: *mf* (mezzo-forte)
- Staff 5: *mf* (mezzo-forte)
- Staff 6: *f* (forte)
- Staff 7: *f* (forte)
- Staff 8: *f* (forte)
- Staff 9: *f* (forte), *p* (piano), *ff* (fortissimo)

The score is marked with several dynamic changes and includes a section labeled "2" starting at measure 15, a section labeled "3" starting at measure 29, and a section labeled "4" starting at measure 43. The piece concludes with a final dynamic of *ff*.

Кларнет 1

Пасодобль

из кинофильма "Карнавальная ночь"

Муз. А.Лепина
Инстр. М.Хавкина

f

1

mf

2

f

3

mf

4

f

p ————— *ff*

Кларнет 2

Пасодобль

из кинофильма "Карнавальная ночь"

Муз. А.Лепина
Инстр. М.Хавкина

Musical score for Clarinet 2, titled "Пасодобль" (Pasodoble), from the film "Карнавальная ночь" (Carnival Night). The score is in 3/4 time and B-flat major. It features various dynamics (f, mf, p, ff), articulation (accents, slurs), and performance markings (1, 2, 3, 4).

Корнет 1

Пасодобль

из кинофильма "Карнавальная ночь"

Муз. А.Лепина
Инстр. М.Хавкина

6 *f* 1

14 *mf*

22 *f* 2

30 *mf*

38 *mf* 3

46 *mf*

54 *mf* 4 Кл.1

62 *mf* Корн.

71 *mf*

75 *f* *p* *ff*

Корнет 2

Пасодобль

из кинофильма "Карнавальная ночь"

Муз. А.Лепина
Инстр. М.Хавкина

The musical score for Cornet 2 consists of ten staves of music in 3/4 time, written in a key signature of two flats (B-flat and E-flat). The score includes various dynamics and articulations:

- Staff 1:** Starts with a forte (*f*) dynamic and features a series of eighth-note patterns with accents (>).
- Staff 2:** Features a mezzo-forte (*mf*) dynamic and a melodic line with a slur.
- Staff 3:** Continues the melodic line with a slur.
- Staff 4:** Includes a first ending bracket labeled '2' and a forte (*f*) dynamic.
- Staff 5:** Includes a second ending bracket labeled '3' and a mezzo-forte (*mf*) dynamic.
- Staff 6:** Includes a fourth ending bracket labeled '4' and 'Кл.1'.
- Staff 7:** Labeled 'Корн.' (Cornet), it features a melodic line with a slur.
- Staff 8:** Features a forte (*f*) dynamic and a series of eighth-note patterns with accents (>).
- Staff 9:** Features a forte (*f*) dynamic and a series of eighth-note patterns with accents (>).
- Staff 10:** Features a piano (*p*) dynamic followed by a fortissimo (*ff*) dynamic.

Пасодобль

Тенор 1

из кинофильма "Карнавальная ночь"

Муз. А.Лепина
Инстр. М.Хавкина

Musical score for Tenor 1, "Пасодобль" (Pasodoble) from the film "Карнавальная ночь" (Carnival Night). The score is in 3/4 time, key of B-flat major. It features various dynamics (f, mf, p, ff) and articulations (accents, slurs). Four first endings are marked with boxes containing the numbers 1, 2, 3, and 4.

Тенор 2

Пасодобль

из кинофильма "Карнавальная ночь"

Муз. А.Лепина
Инстр. М.Хавкина

1

f

mf

2

f

3

mf

4

f

p *ff*

Trombone

Пасодобль

из кинофильма "Карнавальная ночь"

Муз. А.Лепина

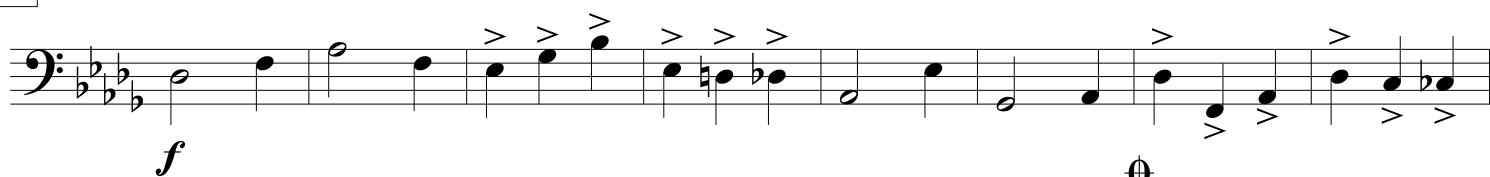
Инстр. М.Хавкина



1



2



3



4



mf

p

ff

Труба

Пасодобль

из кинофильма "Карнавальная ночь"

Муз. А.Лепина
Инстр. М.Хавкина

f

1

mf

2

f

3

4

16

Кл.1

Труба

f

f *p* *ff*

Drum Set

Пасодобль

из кинофильма "Карнавальная ночь"

Муз. А.Лепина

Инстр. М.Хавкина

Каст.

1

f

м.б.

14

mf

21

2

28

f

35

3

42

mf

49

4

56

mf

63

70

Каст.

75

f

f

p

ff

Flauto

Пасодобль

из кинофильма "Карнавальная ночь"

Муз. А.Лепина
Инстр. М.Хавкина

1

f

6

mf

14

2

f

31

3

mf

47

4

65

f

73

f *p* *ff*