

## ГЕРОЙ

Альт Эс I

Редакция Н. Иванова - Радкевича

Musical score for Alto E-flat I, titled "Герой" (The Hero). The score is in G-flat major (two flats) and 4/4 time. It consists of ten staves of music. The first staff begins with a treble clef, a key signature of two flats, and a common time signature. The dynamics are marked *f* and *mf*. A first ending bracket labeled "1" spans the first two staves. The third staff continues the melody. The fourth staff has a *cresc.* marking and a second ending bracket labeled "2". The fifth and sixth staves continue the piece. The seventh staff has two endings: "1." and "2. Конец". The eighth staff begins with a third ending bracket labeled "3" and a *f* dynamic. The ninth and tenth staves conclude the piece with first and second endings.

## Альт Эс I

Трио

Musical score for Alto in E-flat major, Partita No. 1, Trio section. The score is written in treble clef with a key signature of two flats (B-flat and E-flat) and a 3/4 time signature. The tempo is marked 'Trio'. The score consists of ten staves of music. The first staff begins with a dynamic marking of *f* and a measure rest. The second staff continues the melody with a dynamic marking of *mf*. The third and fourth staves provide harmonic accompaniment. The fifth staff features a first ending (1.) and a second ending (2.). The sixth staff begins with a measure rest and a dynamic marking of *f*, followed by a fifth ending (5.). The seventh and eighth staves continue the accompaniment. The ninth staff features a first ending (1.) and the tenth staff features a second ending (2.).

## ГЕРОЙ

АЛЬТ ЭС II

Редакция Н. Иванова-Радкевича

Musical score for Alto II of "Герой" (The Hero) by N. Ivanov-Radkevich. The score is in G minor (two flats) and 3/4 time. It consists of ten staves of music.

Key features of the score include:

- Staff 1:** Starts with a forte (*f*) dynamic and ends with a mezzo-forte (*mf*) dynamic.
- Staff 2:** Contains a first ending marked with a box containing the number "1".
- Staff 3:** Features a crescendo (*cresc.*) marking and a mezzo-forte (*mf*) dynamic.
- Staff 4:** Contains a second ending marked with a box containing the number "2".
- Staff 5:** Continues the melodic and harmonic development.
- Staff 6:** Includes a double bar line with a circle containing a cross (⊕) above it, and the word "Конец" (The End) written above the staff.
- Staff 7:** Contains a first ending marked with a box containing the number "3".
- Staff 8:** Continues the piece with various rhythmic patterns.
- Staff 9:** Features a forte (*f*) dynamic.
- Staff 10:** Concludes the piece with a first ending marked with a box containing the number "1" and a second ending marked with a box containing the number "2" and a double bar line with a cross symbol (⊕).



## ГЕРОЙ

Баритон Б

Редакция Н. Иванова-Радкевича

Musical score for Baritone B, titled "ГЕРОЙ". The score consists of ten staves of music in a key signature of three flats (B-flat major/D minor) and a 4/4 time signature. The music features various dynamics including *f*, *mf*, and *cresc.*, and includes first and second endings. The score ends with a double bar line and a repeat sign.

Dynamics: *f*, *mf*, *cresc.*, *f*, *mf*.

Markings: 1. 2. 3. 1. 2. Конец.

## Баритон Б

Грио

*f* *mf*

4

1. 2.

5

1.

2.

Detailed description of the musical score: The score is for a Baritone B part. It begins with a treble clef, a key signature of three flats (G minor), and a 4/4 time signature. The first staff starts with a forte (*f*) dynamic and a mezzo-forte (*mf*) dynamic. The second staff contains a first ending bracket labeled '4'. The third staff continues the melodic line. The fourth staff features a first ending bracket labeled '1.' and a second ending bracket labeled '2.'. The fifth staff contains a first ending bracket labeled '5'. The sixth and seventh staves continue the melodic development. The eighth staff has a first ending bracket labeled '1.' and the ninth staff has a second ending bracket labeled '2.'. The piece concludes with a double bar line and repeat dots.

## ГЕРОЙ

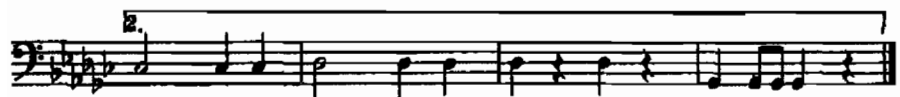
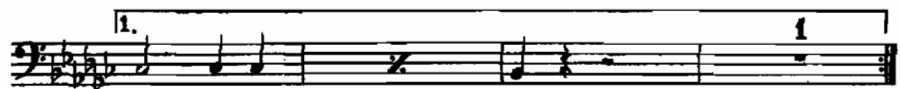
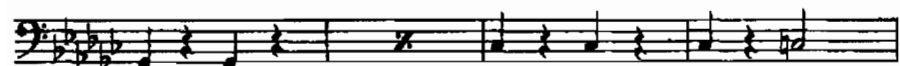
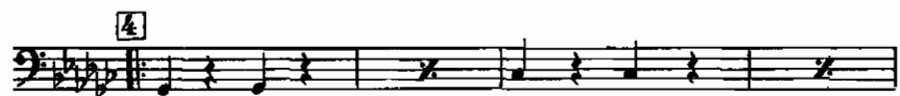
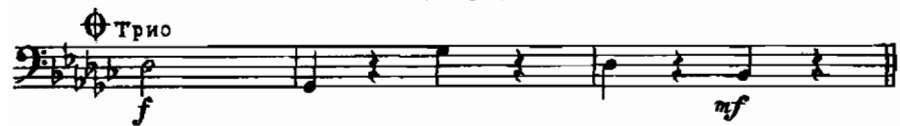
## Бас I

Редакция Н.Иванова - Радкевича

Musical score for Bass I, Partita for Hero. The score consists of ten staves of music in bass clef with a key signature of two flats. It includes dynamic markings (*f*, *mf*, *cresc.*), first and second endings, and a final section marked "Конец".

The score begins with a first ending marked **1** and a dynamic marking of *f*. The second staff continues the melody with some rests. The third staff also continues the melody. The fourth staff features a second ending marked **2** and a dynamic marking of *mf*, with a *cresc.* marking at the beginning. The fifth staff continues the melody. The sixth staff includes a first ending marked **1.** and a second ending marked **2. Конец** with a dynamic marking of *f*. The seventh staff begins a new section marked **3**. The eighth staff continues the melody with a long note. The ninth staff concludes the piece with a first ending marked **1.** and a second ending marked **2.** with a dynamic marking of *mf*.

## Бас I





## ГЕРОЙ

## Бас II

Редакция Н.Иванова-Радкевича

Musical score for Bass II, Partita No. 1 by J.S. Bach, edited by N. Ivanov-Radkevich. The score consists of ten staves of music in G major, 3/4 time.

Dynamics: *f*, *mf*, *cresc.*

First ending: 1.  $\oplus$  | 2. *Конец*

Rehearsal marks: 1, 2, 3

The score concludes with a first ending and a second ending marked "Конец" (The End).

## Бас II

♩ Трио

*f* *mf*

4

1. 2.

5

1. 1

2.

## ГЕРОЙ

## Валторна Эс I

Редакция Н. Иванова - Радкевича

Musical score for Horn in E-flat 1, titled "Герой" (The Hero). The score consists of 12 staves of music in 2/4 time, key of B-flat major. It includes dynamic markings (*f*, *mf*, *cresc.*), first and second endings, and repeat signs.

The score begins with a first ending marked **1** and *f*. The second ending is marked **2** and *mf*. The third ending is marked **3** and *f*. The first ending concludes with a first ending symbol (a circle with a cross), and the second ending concludes with the word "Конец" (The End). The score ends with a first ending marked **1** and a second ending marked **2** with a repeat sign.

## Валторна Эс I

Трио

Musical score for Trumpet I in E-flat major, Trio section. The score consists of ten staves of music. The key signature is two flats (B-flat and E-flat), and the time signature is 4/4. The piece begins with a treble clef, a key signature of two flats, and a tempo marking of *f* (forte). A first ending bracket labeled "1." spans the final two measures of the first staff. A second ending bracket labeled "2." spans the final two measures of the second staff. A third ending bracket labeled "3." spans the final two measures of the third staff. A fourth ending bracket labeled "4." spans the final two measures of the fourth staff. A fifth ending bracket labeled "5." spans the final two measures of the fifth staff. A sixth ending bracket labeled "6." spans the final two measures of the sixth staff. A seventh ending bracket labeled "7." spans the final two measures of the seventh staff. A eighth ending bracket labeled "8." spans the final two measures of the eighth staff. A ninth ending bracket labeled "9." spans the final two measures of the ninth staff. A tenth ending bracket labeled "10." spans the final two measures of the tenth staff. The score concludes with a double bar line.

## ГЕРОЙ

## Валторна Эс II

Редакция Н. Иванова - Радкевича

Musical score for Horn II in E-flat major, Op. 10, No. 1 by Pyotr Ilyich Tchaikovsky. The score consists of ten staves of music. It begins with a treble clef, a key signature of two flats (B-flat and E-flat), and a common time signature. The first staff has a dynamic marking of *f* and a first ending bracket labeled 1. The second staff continues the melody. The third staff has a dynamic marking of *mf*. The fourth staff has a first ending bracket labeled 2 and a *cresc.* marking. The fifth staff continues the melody. The sixth staff has a first ending bracket labeled 1 and a 2. Конец marking. The seventh staff has a first ending bracket labeled 3 and a dynamic marking of *f*. The eighth staff continues the melody. The ninth staff has a first ending bracket labeled 1 and a dynamic marking of *mf*. The tenth staff has a first ending bracket labeled 2 and a repeat sign.

Трио

## Валторна Эс II

Musical score for Trumpet II in E-flat, Part of a Trio. The score is written in 4/4 time and consists of ten staves. The key signature is two flats (B-flat and E-flat). The first staff begins with a treble clef, a key signature of two flats, and a common time signature. The first measure is marked with a forte (*f*) dynamic. The second staff begins with a first ending bracket labeled '4'. The third staff continues the melody. The fourth staff features a long slur over the first four measures. The fifth staff includes first and second endings, labeled '1.' and '2.'. The sixth staff begins with a first ending bracket labeled '5' and a forte (*f*) dynamic. The seventh and eighth staves continue the melody. The ninth staff includes a first ending bracket labeled '1.'. The tenth staff includes a second ending bracket labeled '2.'. The score concludes with a double bar line.

## ГЕРОЙ

Кларнет Б I

Редакция Н. Ивасова - Радкевича

Musical score for Clarinet B I, titled "ГЕРОЙ". The score is in B-flat major and 4/4 time. It consists of 11 staves of music. The first staff begins with a dynamic marking of *f* and a first ending bracket labeled "1". The second staff continues with *mf* dynamics. The third staff includes a *cresc.* (crescendo) marking and *sf* (sforzando) dynamics. The fourth staff features a second ending bracket labeled "2". The fifth staff has a first ending bracket labeled "1." and a second ending bracket labeled "2." with the word "Конец" (The End) written above it. The sixth staff starts with a third ending bracket labeled "3" and a dynamic marking of *f*. The seventh, eighth, and ninth staves continue the melodic line. The tenth staff includes a *trillo* (trill) marking. The eleventh staff concludes with a dynamic marking of *mf* and a double bar line with repeat dots.

## Кларнет Б I

Трио  $\text{♩}$ 

Musical score for Clarinet B I, Trio section. The score is written in 4/4 time and consists of 11 staves. The key signature is three flats (B-flat, E-flat, A-flat). The tempo is marked with a quarter note symbol. The score includes dynamic markings: *f* (forte) and *mf* (mezzo-forte). The piece begins with a *f* dynamic and a *mf* dynamic. The score features various musical notations, including slurs, accents, and dynamic markings. The score is divided into two main sections, 1. and 2., with a repeat sign at the end of each section. The first section (1.) spans from the first staff to the eighth staff, and the second section (2.) spans from the ninth staff to the eleventh staff. The score concludes with a double bar line.



## ГЕРОЙ

## Кларнет Б II

Редакция Н. Иванова-Радкевича

Musical score for Clarinet B II, titled "ГЕРОЙ". The score consists of ten staves of music. The key signature is two flats (B-flat major or D-flat minor). The first staff begins with a dynamic marking of *f* and a fermata over the first measure. The second staff has a first ending bracket labeled "1". The third staff has a *cresc.* marking and a dynamic of *mf*. The fourth staff has a second ending bracket labeled "2". The fifth staff has two endings: "1." with a repeat sign and "2. Конец". The sixth staff has a third ending bracket labeled "3". The seventh and eighth staves continue the melodic line. The ninth staff has a *truu* marking and a dynamic of *mf*. The tenth staff has two endings: "1." and "2." with a repeat sign and a fermata over the final measure.

## Кларнет Б II

Трио

*f* *mf*

4

5

1. 2.

1. 1.

2.

## ГЕРОЙ

## Корнет Б I

Редакция Н. Иванова - Радкевича

Musical score for Horn B I, titled "ГЕРОЙ" (The Hero), by N. Ivanov-Radkevich. The score is in B-flat major and 2/4 time. It consists of 11 staves of music.

Key features of the score include:

- Staff 1:** Starts with a dynamic marking of *f* and ends with *mf*. A first ending bracket labeled "1." spans the first two measures.
- Staff 2:** Continues the melodic line with various articulations.
- Staff 3:** Features a triplet of eighth notes.
- Staff 4:** Includes a *cresc.* (crescendo) marking and a dynamic shift to *sf* (sforzando).
- Staff 5:** Contains a second ending bracket labeled "2.".
- Staff 6:** Shows a first ending bracket labeled "1." and a second ending bracket labeled "2. Конец" (End).
- Staff 7:** Starts with a dynamic marking of *f* and a third ending bracket labeled "3.".
- Staff 8:** Continues the rhythmic pattern.
- Staff 9:** Continues the rhythmic pattern.
- Staff 10:** Features a first ending bracket labeled "1." and a second ending bracket labeled "2.".
- Staff 11:** Ends with a dynamic marking of *mf* and a double bar line with repeat dots.

## Корнет Б I

Трио

*f* *mf*

4

1. 2.

*f*

5

1.

2.

## ГЕРОЙ

Корнет Б II

Редакция Н. Иванов-Радкевича

Musical score for Horn B II, titled "ГЕРОЙ". The score consists of 12 staves of music in a key signature of two flats (B-flat major/D minor) and 2/4 time. The piece begins with a dynamic marking of *f* (forte) and a first ending bracket labeled "1". The second staff continues with a dynamic marking of *mf* (mezzo-forte). The third staff features a *cresc.* (crescendo) marking and a second ending bracket labeled "2". The fourth staff continues with a *mf* dynamic. The fifth staff has a first ending bracket labeled "1" and a second ending bracket labeled "2", with the word "Конец" (The End) written above the second ending. The sixth staff begins with a third ending bracket labeled "3" and a dynamic marking of *f*. The seventh and eighth staves continue with rhythmic patterns. The ninth staff has a dynamic marking of *f*. The tenth staff has a first ending bracket labeled "1" and a second ending bracket labeled "2". The eleventh staff continues with a dynamic marking of *mf* and ends with a double bar line and repeat sign.

## Корнет Б II

Трио

1 4

*f* *mf*

5

1. 2.

*f*

1.

2.

## ГЕРОЙ

## Малый барабан

Редакция Н. Иванова-Радкевича

2

*f*

*mf*

1

*cresc.*

*mf*

2

1.

2. *Конец*

3

*f*

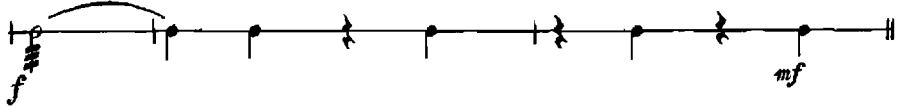
1.

2.

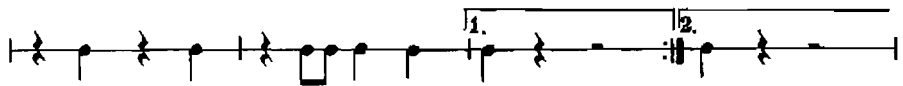
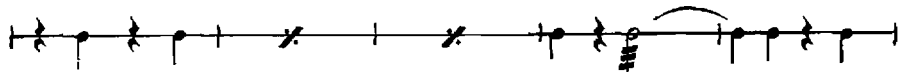
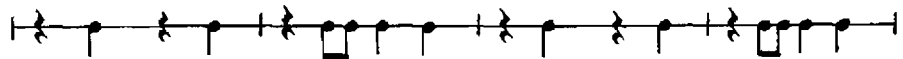
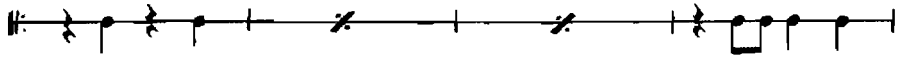
3

## Малый барабан

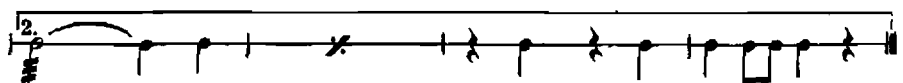
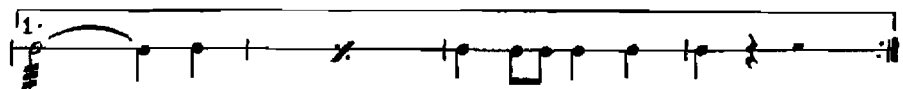
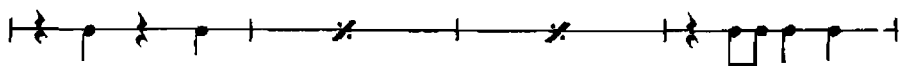
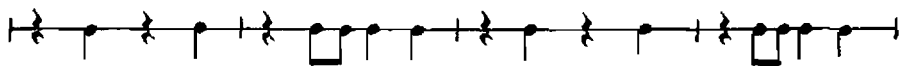
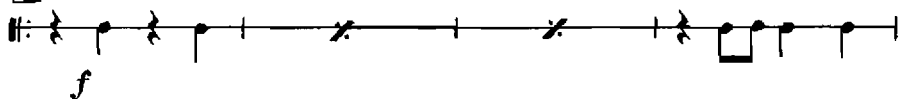
Трио



4



5

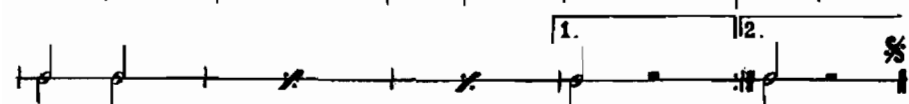
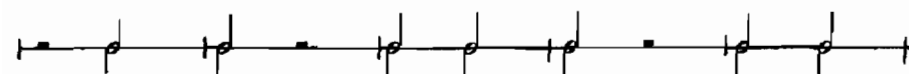
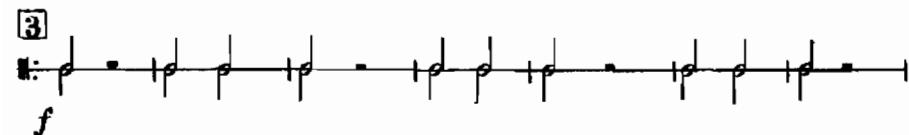
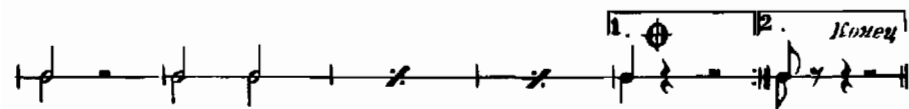
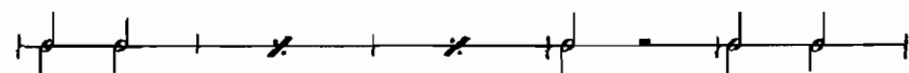
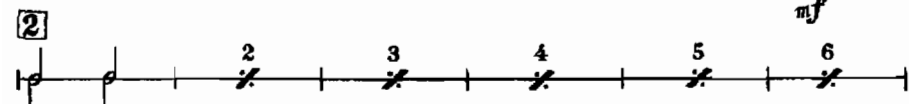
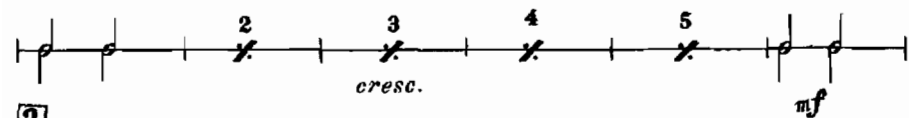
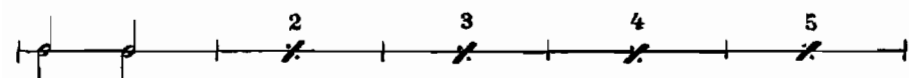
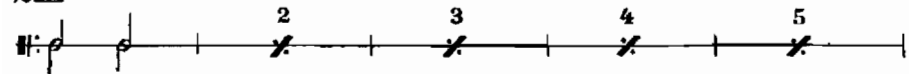
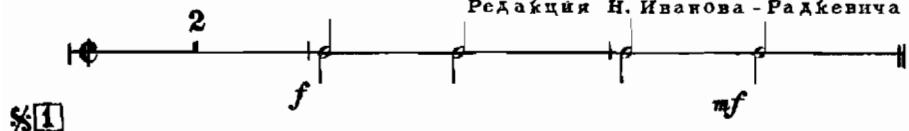




## ГЕРОЙ

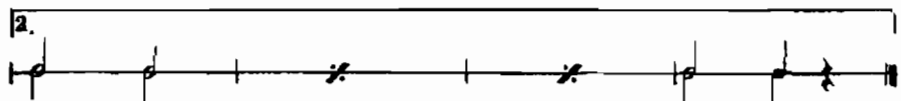
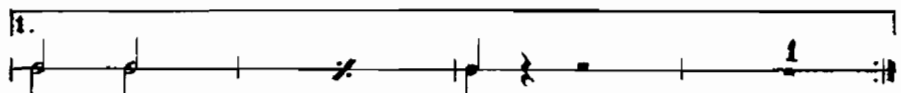
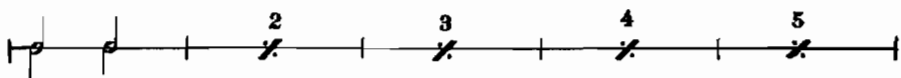
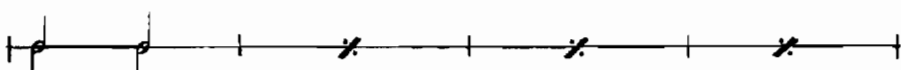
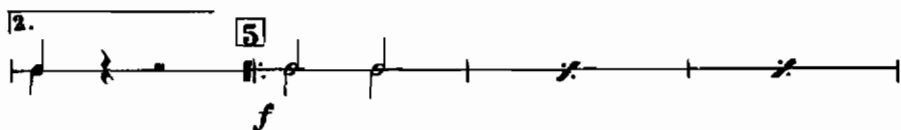
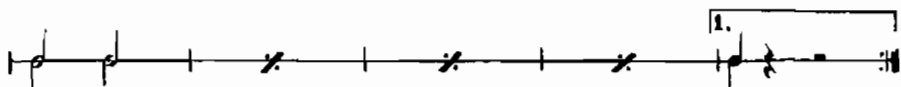
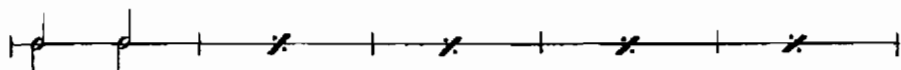
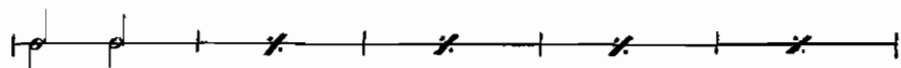
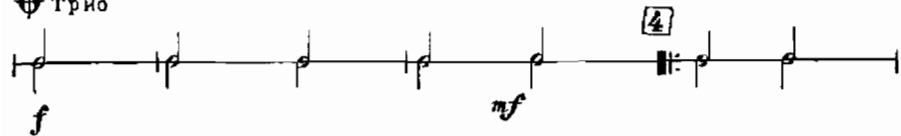
## Тарелки и Больш. барабан

Редакция Н. Иванова - Радкевича



## Тарелки и Больш. барабан

♩ Трио



## ГЕРОЙ

Тенор Б I

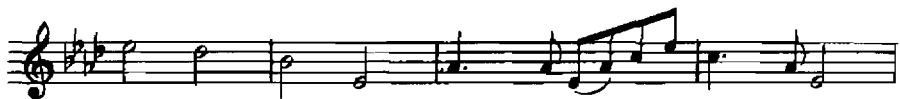
Редакция Н.Иванова - Радкевича

Musical score for Tenor B I, "Герой" by N. Ivanov-Radkevich. The score consists of ten staves of music in G major, 4/4 time.

- Staff 1: *f*
- Staff 2: *mf*, first ending (1)
- Staff 3: *cresc.*, *sf*
- Staff 4: *mf*, second ending (2)
- Staff 5: First ending (1) and second ending (2) with a double bar line and repeat signs.
- Staff 6: *f*, second ending (2) with the word "Конец" (The End) written above the staff.
- Staff 7: Third ending (3)
- Staff 8: Continuation of the melody
- Staff 9: First ending (1) and second ending (2) with a double bar line and repeat signs, followed by a section marked with a double bar line and repeat signs.

♩ Трио

## Тенор Б I



## ГЕРОЙ

Тенор Б II

Редакция Н. Иванова - Радкевича

Musical score for Tenor B II, "Герой" by N. Ivanov-Radkevich. The score consists of 11 staves of music in 2/4 time, key of B-flat major.

Dynamics: *f*, *mf*, *cresc.*, *f*.

First ending: 1.  $\oplus$  | 2. *Конец*

Second ending: 1. | 2.  $\otimes$

## Тенор Б II

Partita.Ru

♩ Трио

*f* *mf*

1. 2.

5 *f*

1. 2.

## ГЕРОЙ

## Тромбон

Редакция Н. Иванова - Радкевича

Musical score for Trombone (Тромбон) in bass clef, 2/4 time, key of B-flat major. The score consists of nine staves of music.

Dynamics: *f* (forte), *mf* (mezzo-forte), *cresc.* (crescendo), *f* (forte), *mf* (mezzo-forte).

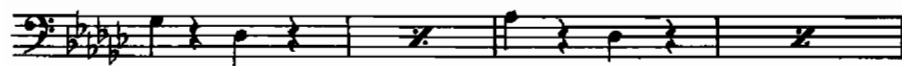
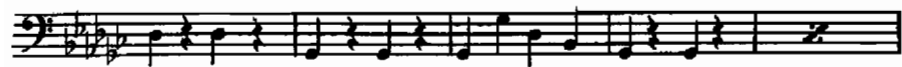
Rehearsal marks: **1**, **2**, **3**.

First ending: 1. (first ending), 2. *Конец* (The End).

The score begins with a dynamic of *f*. It features several measures with rests, indicated by a double slash (//). The piece concludes with a first ending that leads to a second ending marked "Конец" (The End), which ends with a double bar line and a fermata. The final dynamic is *mf*.

## Тромбон

♣ Трио





## ГЕРОЙ

Труба Б

Редакция Н. Иванова-Радкевича

Musical score for Trumpet B, titled "Герой" (The Hero). The score is in B-flat major and 3/4 time. It consists of 11 staves of music. The first staff begins with a dynamic marking of *f* and ends with *mf*. The second staff has a first ending bracket labeled 1. The third staff features a triplet of eighth notes and a *cresc.* marking. The fourth staff has a second ending bracket labeled 2. The fifth staff has a first ending bracket labeled 1. 1/2 and a second ending bracket labeled 2. Конец. The sixth staff has a third ending bracket labeled 3 and a dynamic marking of *f*. The seventh and eighth staves continue the melodic line. The ninth staff has a first ending bracket labeled 1. and a second ending bracket labeled 2. with a double bar line and repeat sign. The tenth and eleventh staves conclude the piece with a dynamic marking of *mf*.

Трио

## Труба Б

Musical score for Trumpet B, Trio setting. The score is written in G major (one sharp) and 3/4 time. It consists of ten staves of music. The first staff begins with a treble clef, a key signature of one sharp (F#), and a 3/4 time signature. The first measure is marked with a dynamic of *f* (forte) and a triplet of eighth notes. The second measure is marked with a dynamic of *mf* (mezzo-forte). The score includes various musical notations such as slurs, ties, and dynamic markings. There are two first endings (marked 1.) and two second endings (marked 2.). A box containing the number 4 is placed above the second staff, and a box containing the number 5 is placed above the fifth staff.

## ГЕРОЙ

Флейта

Редакция Н. Иванова - Радкевича

Musical score for Flute, titled "ГЕРОЙ" (The Hero). The score is in G minor, 3/4 time, and consists of 12 staves. It features various dynamics (f, sf, mf, cresc.), articulation (accents), and repeat signs with first and second endings. The piece concludes with a final dynamic of mf.

Dynamics: *f*, *sf*, *mf*, *cresc.*, *f*, *mf*, *f*, *mf*.

Rehearsal marks: 1, 2, 3.

Section: 2. Конец

Final dynamic: *mf*.

## Флейта

Трио

*f* *mf*

4

1. 2. 5

*f*

1. 2.