

Flute1-2

"Легендарный Севастополь"

$\text{♩} = 120$

1

2

3

4

5

6

7

V.S.

Flute1-2

The musical notation is written on a single staff in G major (one sharp) and 4/4 time. The piece begins with a treble clef and a key signature of one sharp (F#). The first measure contains a quarter note G4 with an accent (>), followed by a slur over a quarter-note eighth-note pair (A4-G4), a quarter-note eighth-note pair (B4-A4), and a quarter-note eighth-note pair (C5-B4). The second measure starts with a trill on G4, indicated by a wavy line above the note and the letter 'tr', followed by a slur over a quarter-note eighth-note pair (G4-F#4), a quarter-note eighth-note pair (A4-G4), and a quarter-note eighth-note pair (B4-A4). The third measure contains a quarter note G4 with an accent (>), followed by a quarter note F#4 with an accent (>), and a quarter note E4 with an accent (>). The fourth measure contains a quarter note D4 with an accent (>), followed by a quarter rest. The fifth measure contains a quarter note C4 with an accent (>), followed by a quarter note B3 with an accent (>), and a quarter note A3 with an accent (>). The sixth measure contains a quarter note G3 with an accent (>), followed by a quarter rest. The seventh measure contains a quarter note F#3 with an accent (>), followed by a quarter note E3 with an accent (>), and a quarter note D3 with an accent (>). The eighth measure contains a quarter note C3 with an accent (>), followed by a quarter rest. The piece concludes with a double bar line.

Oboe1-2

"Легендарный Севастополь"

$\text{♩} = 120$

1

2

3

4

5

6

7

Clarinet in B \flat 1*"Легендарный Севастополь"*

$\text{♩} = 120$

1

2

3

4

5

6

7

Clarinet in B \flat 1



Clarinet in B \flat 2/3*"Легендарный Севастополь"*

$\text{♩} = 120$

1

2

3

4

5

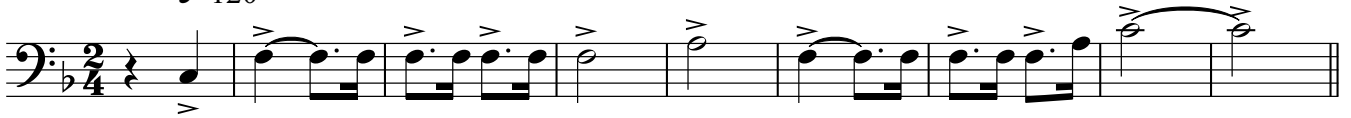
6

7

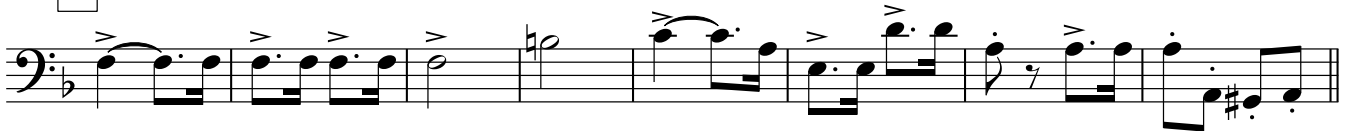
Bassoon1-2

"Легендарный Севастополь"

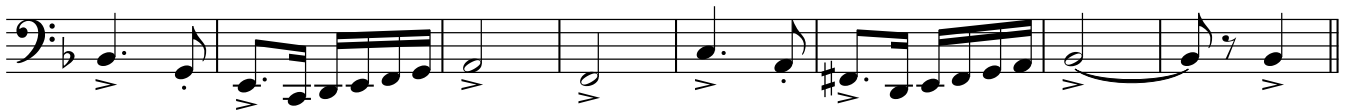
♩=120



1



2



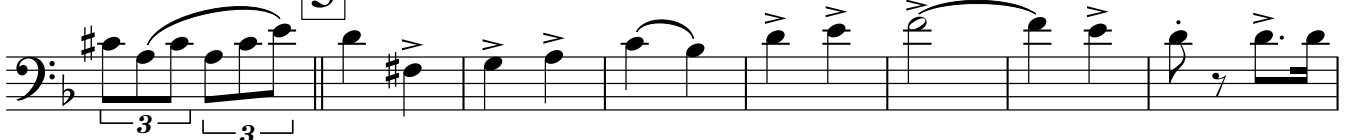
3



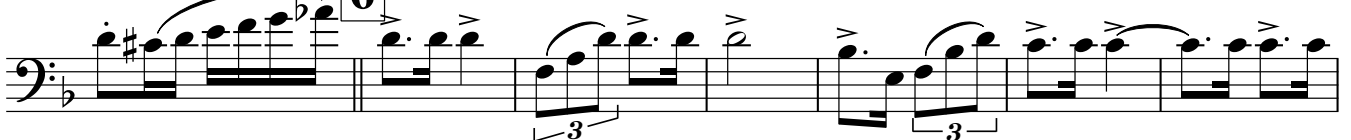
4



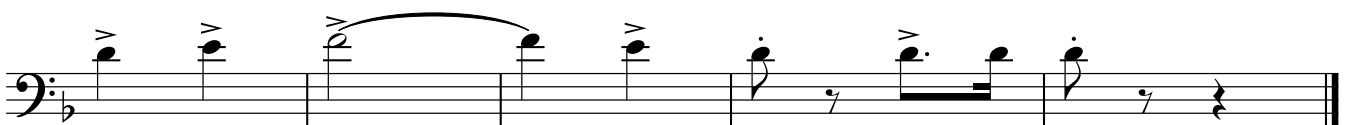
5



6



7



Alto Saxophone 1-2

"Легендарный Севастополь"

$\text{♩} = 120$

1

2

3

4

5

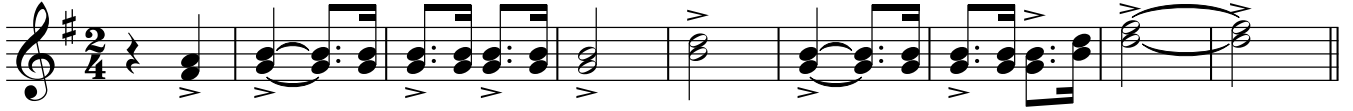
6

7

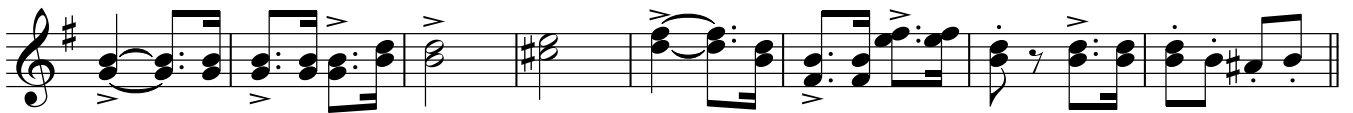
Tenor Saxophone 1-2

"Легендарный Севастополь"

♩=120



1



2



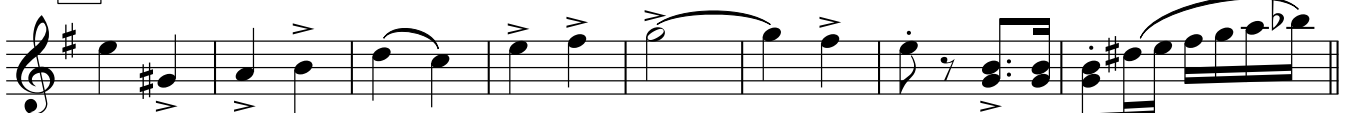
3



4



5



6



7



Baritone Saxophone

"Легендарный Севастополь"

♩=120



1



2



3



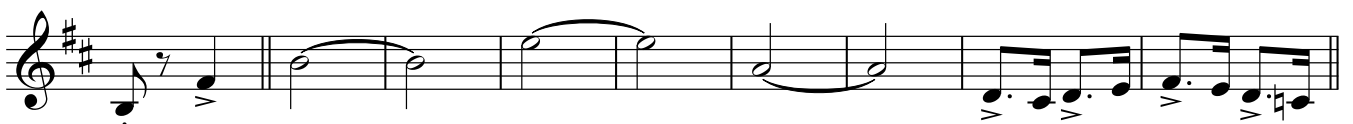
4



5



6



7



Horn in F1-2

"Легендарный Севастополь"

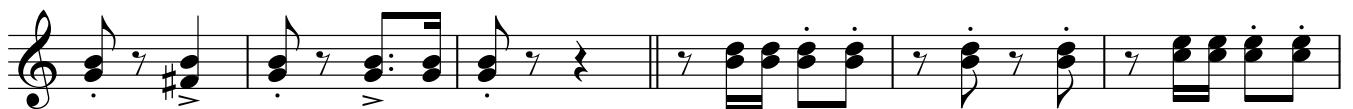
♩=120



1



2



3



4



5



6



7



Horn in F3-4

"Легендарный Севастополь"

♩=120

1

2

3

4

5

6

7

Trumpet in B \flat 1 2*"Легендарный Севастополь"*

♩=120



1



2



3



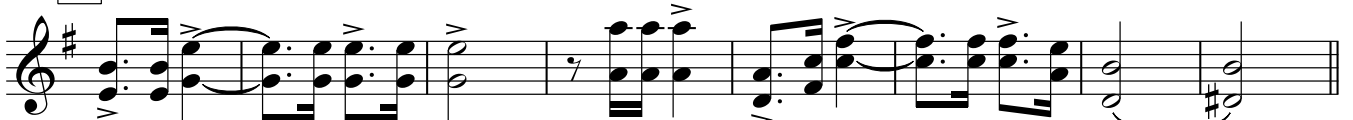
4



5



6



7



Trombone1-2

"Легендарный Севастополь"

$\text{♩} = 120$

1

2

3

4

5

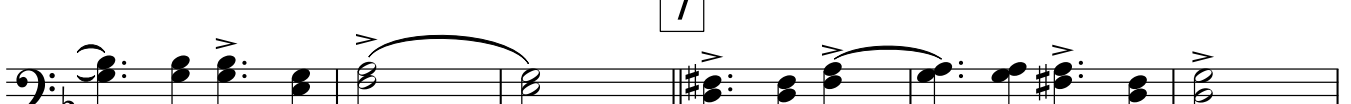
6

7

Trombone 3-4

"Легендарный Севастополь"

♩=120



Snare drum

"Легендарный Севастополь"

120

1

2

3

4

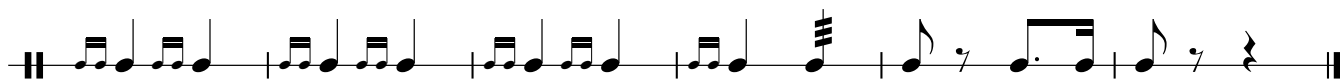
5

6

7

2

Snare drum



Bass drum

"Легендарный Севастополь"

$\text{♩} = 120$

The image displays a musical score for a bass drum in 2/4 time, with a tempo of 120 beats per minute. The score is divided into eight measures, each starting with a double bar line and a measure rest. The notes are represented by stems with flags, indicating a specific rhythmic pattern. Measure 1 is the starting point. Measures 2 through 7 show a consistent rhythmic pattern of eighth notes. Measure 8 concludes with a quarter note followed by a quarter rest, marked with a '7' above and below the note, likely indicating a specific articulation or a common misreading of the notation.

1

2

3

4

5

6

7

Glockenspiel

"Легендарный Севастополь"

$\text{♩} = 120$

15

1

15

2

15

3

15

4

15

5

15

6

15

7

15

Cornet 1

"Легендарный Севастополь"

♩=120



1



2



3



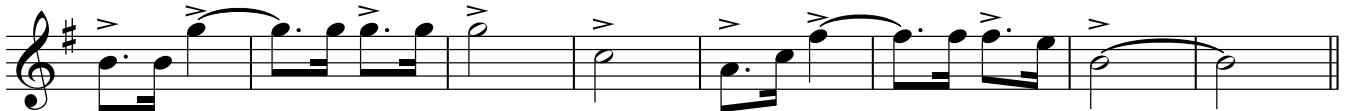
4



5



6



7



Cornet 2

"Легендарный Севастополь"

♩=120



1



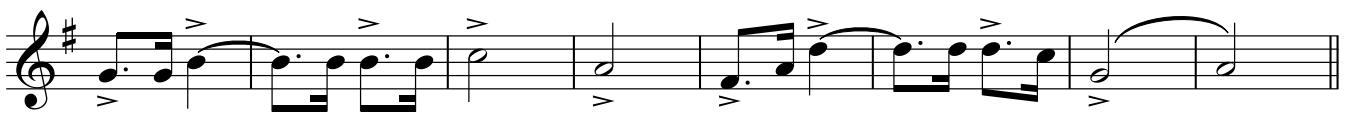
2



3



4



5



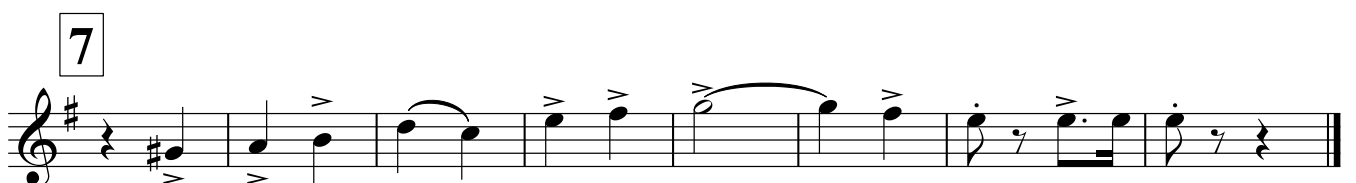
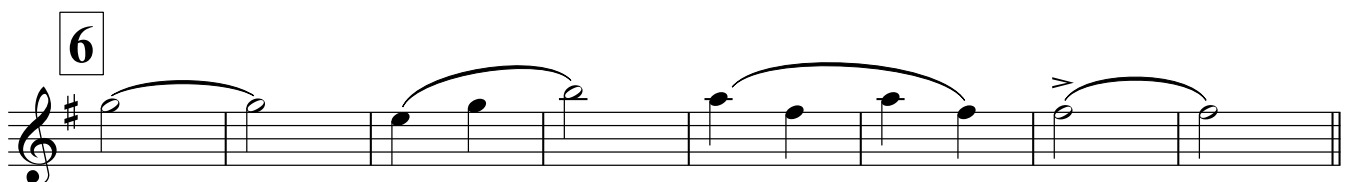
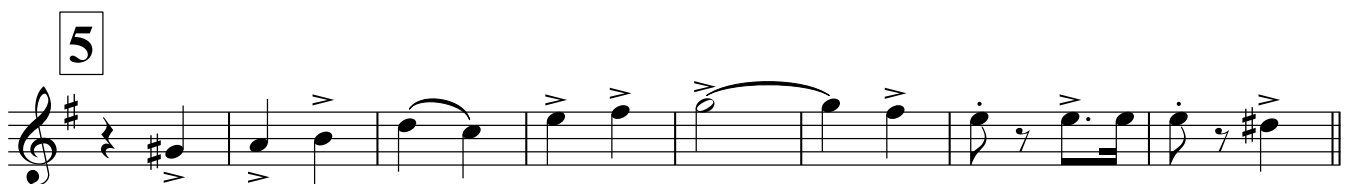
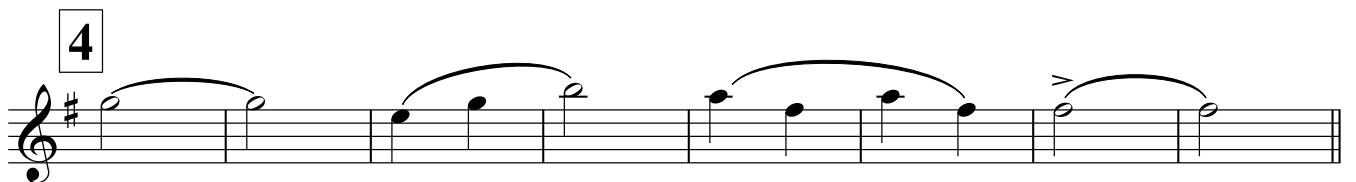
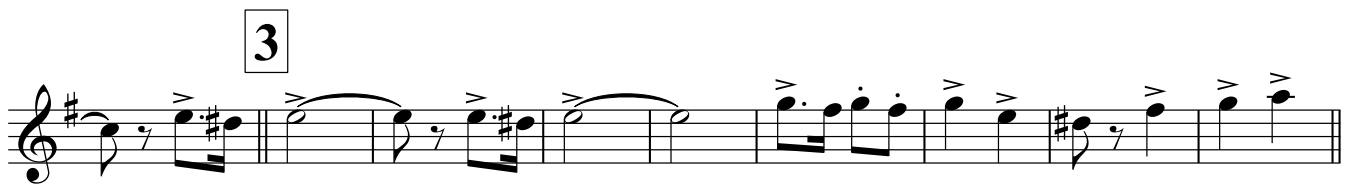
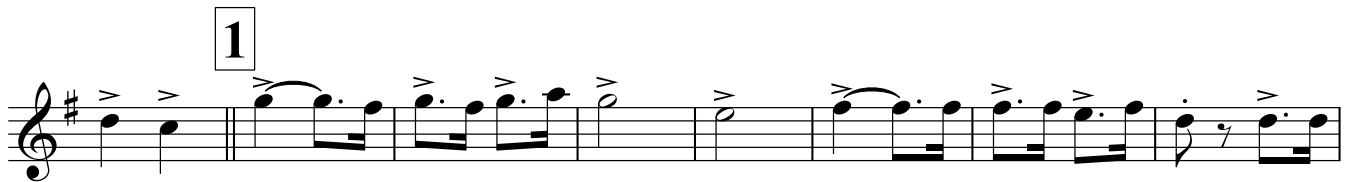
6



7



Тенор

"Легендарный Севастополь"

Baritone B \flat *"Легендарный Севастополь"*

1



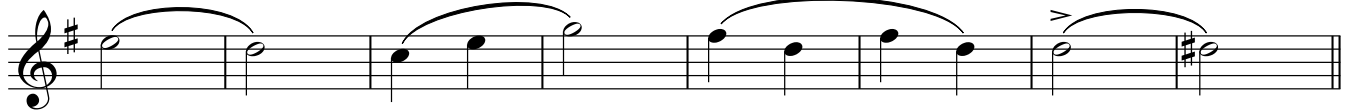
2



3



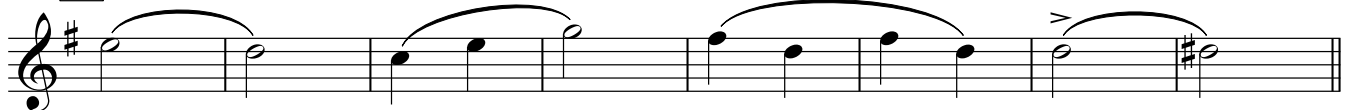
4



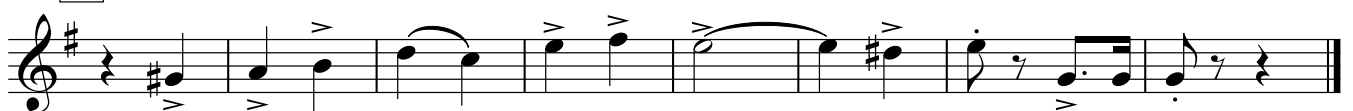
5



6



7



Tuba

"Легендарный Севастополь"

♩=120



1



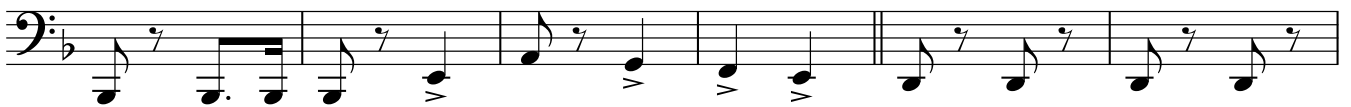
2



3



4



5



6



7



Tuba



Bass guitar

"Легендарный Севастополь"

♩=120



1



2



3



4



5



6



7



Bass guitar



*Пьеса аранжирована 17 марта 2014 года
полковником Александром Халиловым.*