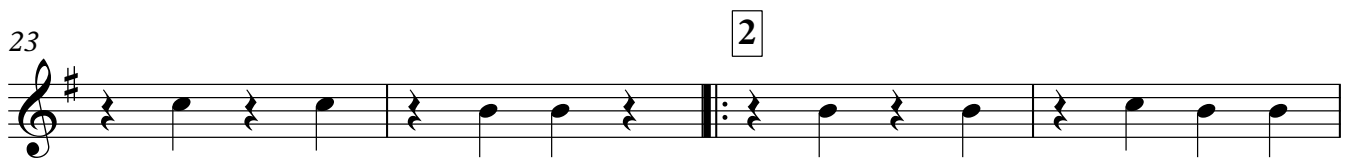
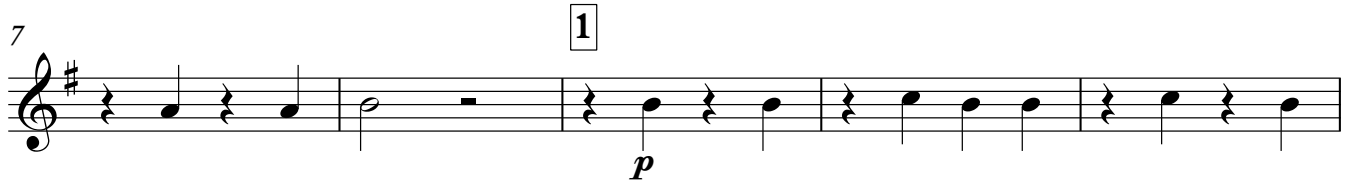


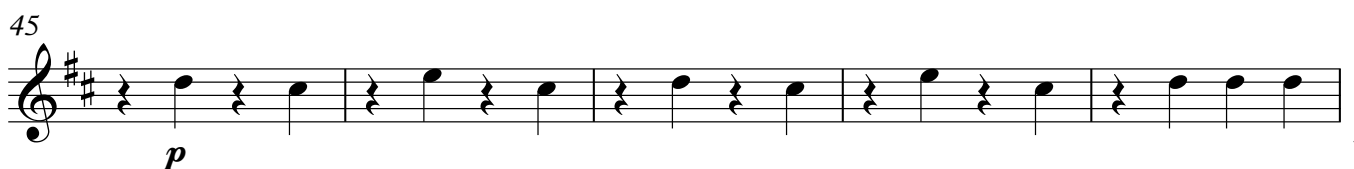
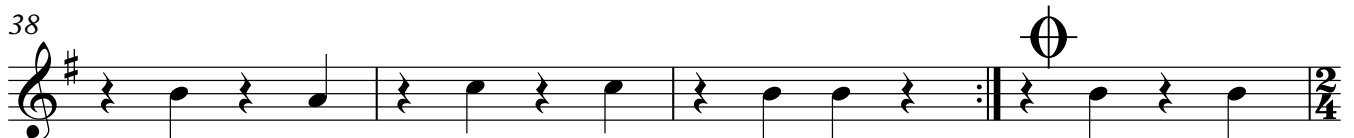
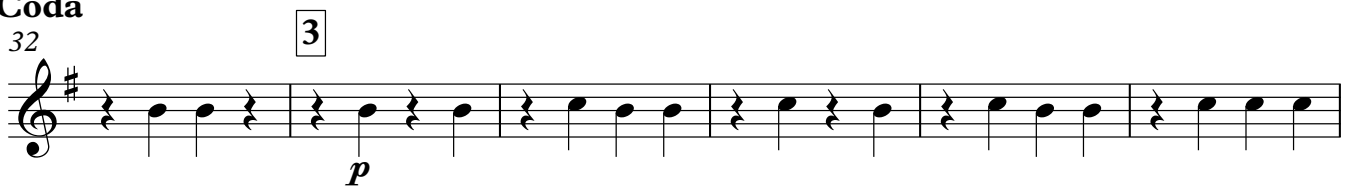
## Shape of my heart

АЛТ В Е♭

♩ = 86



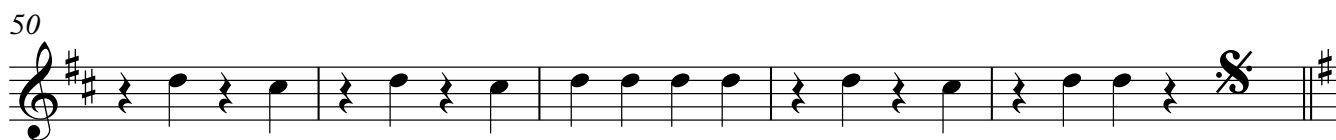
ump to Coda



V.S.

2

## АЛЪТ В Е♭



# Shape of my heart

Альт-саксофон

♩ = 86

*mp*

5

1 8

17 Solo

*mf*

21

25 Тромбон

*mp* ⊕

Jump to Coda

32

3 8 ⊕

45 Solo

*mf*

51

⊕

55 Coda

3 4 ⊕

## Shape of my heart

Баритон

$\text{♩} = 86$

*p*

8 **1**  
Тенор

12 Баритон

17  $\text{Coda}$

23 **2**

27

31 **3**  
Тенор  
*p*  
jump to Coda  $\text{Coda}$

35

39 Баритон  $\text{Coda}$  2

2

Баритон

45

*p*

50

Coda

55 Coda

**3**

**2**

*mp*

62

# Shape of my heart

Корнет 2 в B♭

♩ = 86

5

17

28

mp to Coda

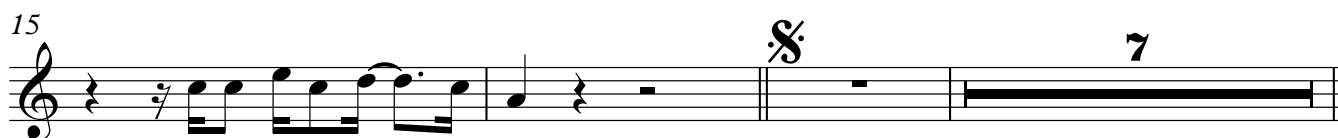
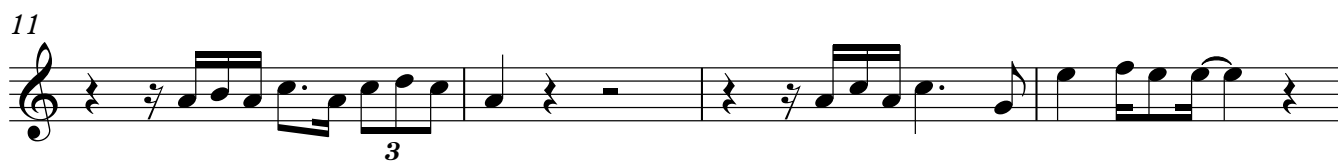
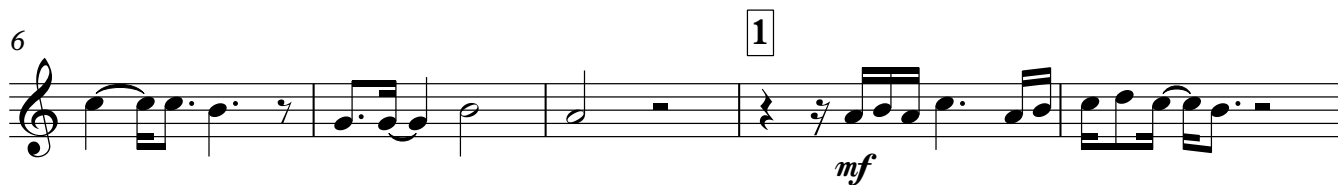
32

44

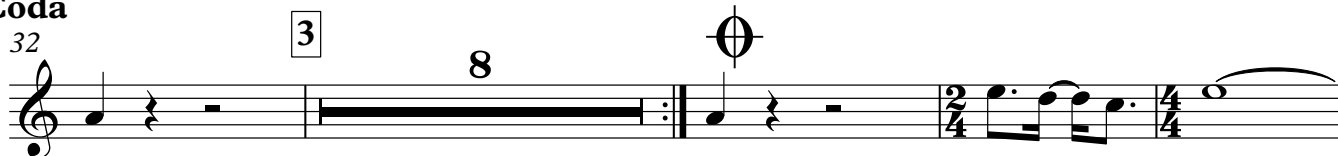
48

55 Coda Coda

## Shape of my heart

Корнет в В $\flat$  $\text{♩} = 86$ 

mp to Coda



2

## Корнет в Вb

Coda  
55 Coda

59

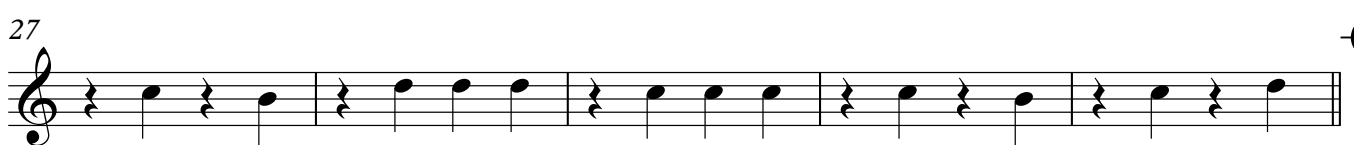
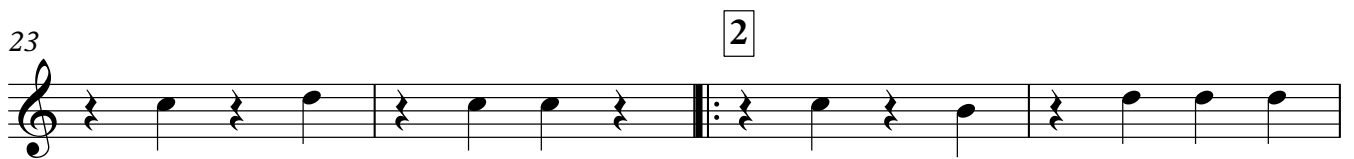
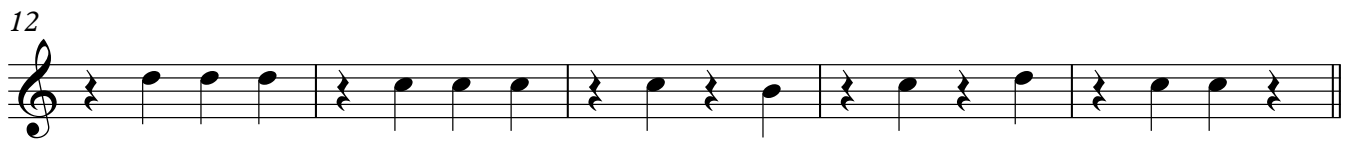
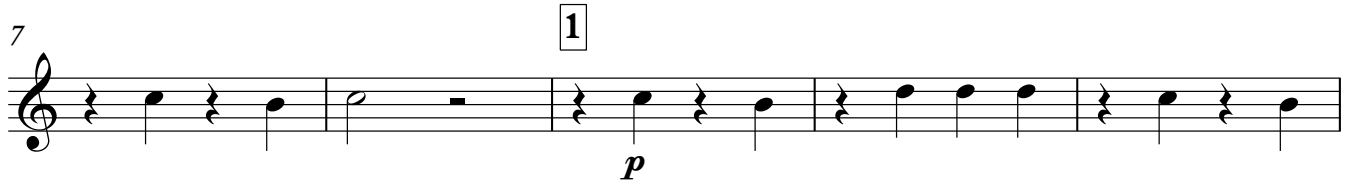




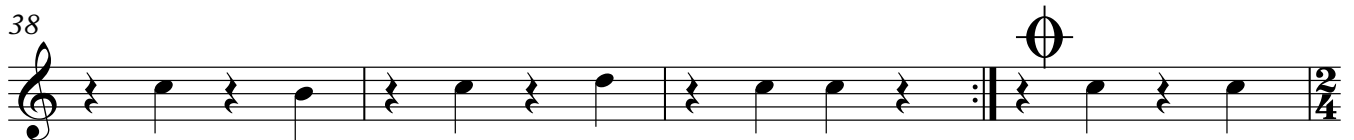
## Shape of my heart

Тенор 2

♩ = 86



mp to Coda



V.S.

2

Тенор 2

50



55 Coda  
Coda



60



# Shape of my heart

Тенор

♩ = 86

*p*

6

*p*

10

13

17

Тромбон

20

25

Баритон

28

Тенор

Imp to Coda

32

*p*

36

2

39 

45 

49 

54 

Coda  
Coda

62

## Shape of my heart

Тромбон 2

♩ = 86

8 1

17 **Тромбон**  
*p*

20

24 2

30 **jump to Coda**  $\emptyset$  3

39  $\emptyset$

44

49  $\emptyset$

55 **Coda**  
Coda

2

Тромбон 2

61

*p*



2

Тромбон

54

Coda  
Coda

Musical staff for Trombone, measures 54-59. The staff is in bass clef with a key signature of one flat. It features a Coda symbol at measure 54, followed by a series of eighth notes. The time signature changes from 2/4 to 4/4 at measure 59.

60

Musical staff for Trombone, measures 60-65. The staff is in bass clef with a key signature of one flat. It features a series of notes, including a sharp sign, and ends with a double bar line.

*p*



# Shape of my heart

Труба в Вб

♩ = 86

*p*

5

1

8

17

7

2

6

**mp to Coda**

32

3

3

37

2/4

42

2

*p*

48

3/8

Coda

55 Coda

3

7

# Shape of my heart

## Туба 2

♩ = 86

7 1

14

19

25 2

32 3

jump to Coda

39

45

52

57

4

## Shape of my heart

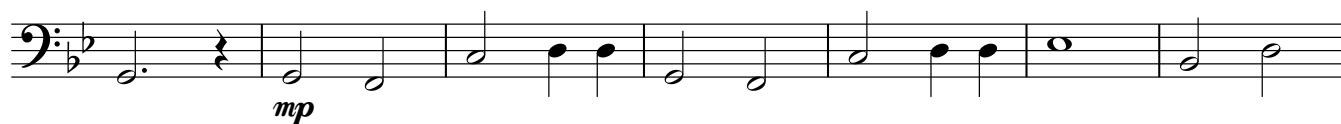
Туба

♩ = 86



8

1



15



22

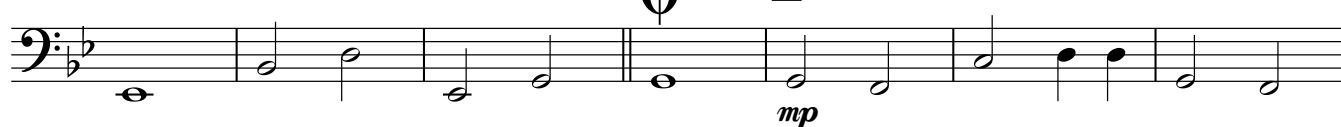
2



29

jump to Coda

3



36



43



49



55

Coda  
Coda

59

4



## Ударная установка

## Shape of my heart

♩ = 86

Musical notation for the first system, measures 1-3. The staff shows a drum set pattern with 'x' marks for cymbals and dots for other drums. The dynamic marking *mp* is present.

3

Continuation of the drum set pattern for measures 4-6.

6

Continuation of the drum set pattern for measures 7-9. A first ending bracket labeled '1' is shown at the end of the system.

10

Continuation of the drum set pattern for measures 10-15.

16

Continuation of the drum set pattern for measures 16-19. A section symbol (§) is placed above the staff at measure 16.

20

Continuation of the drum set pattern for measures 20-23.

24

Continuation of the drum set pattern for measures 24-27. A second ending bracket labeled '2' is shown at the end of the system.

28

Continuation of the drum set pattern for measures 28-31. A Coda symbol (⊙) is placed at the end of the system.

mp to Coda

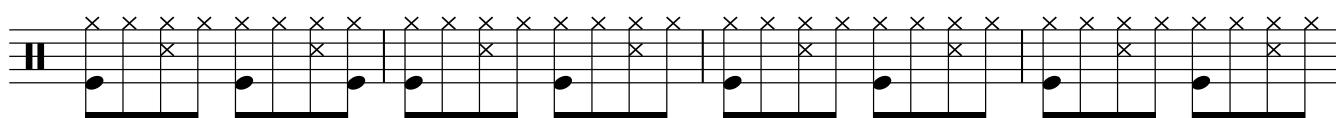
32

Continuation of the drum set pattern for measures 32-35. A third ending bracket labeled '3' is shown at the end of the system.

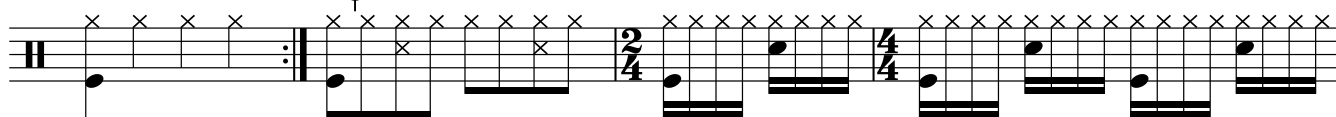
V.S.

Ударная установка

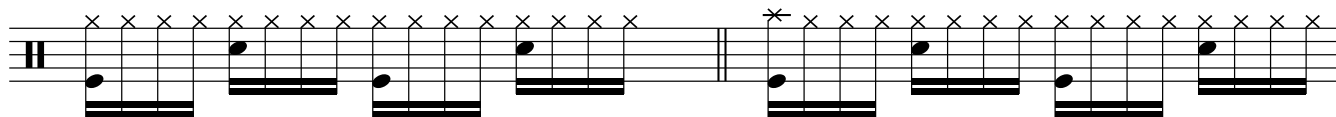
36



40



44



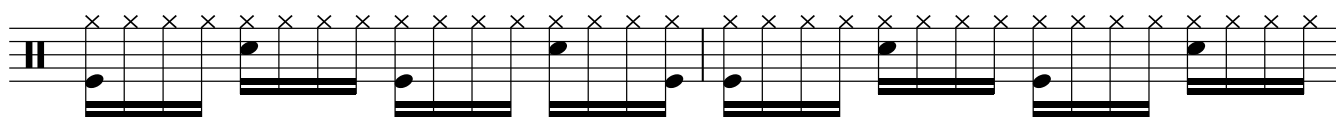
46



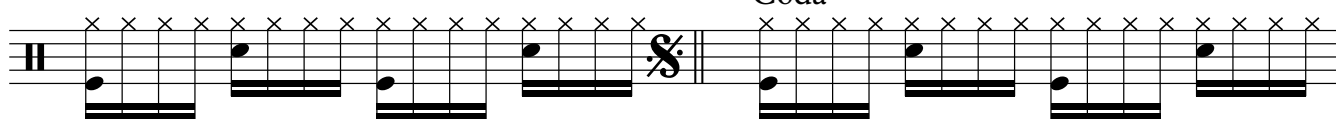
49



52



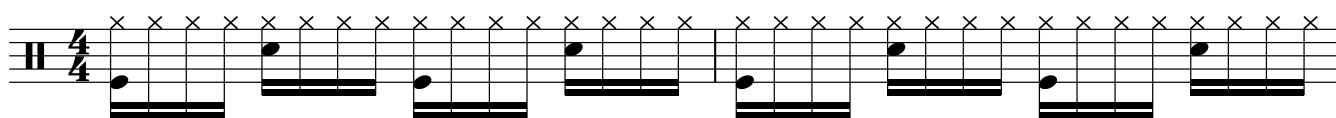
54



56



59



61

