

LEMON TREE

Flute 1

Fool's Garden

Allegro 20 $\text{♩} = 148$

p

27

41

49

55

p

63

70

76

84

p

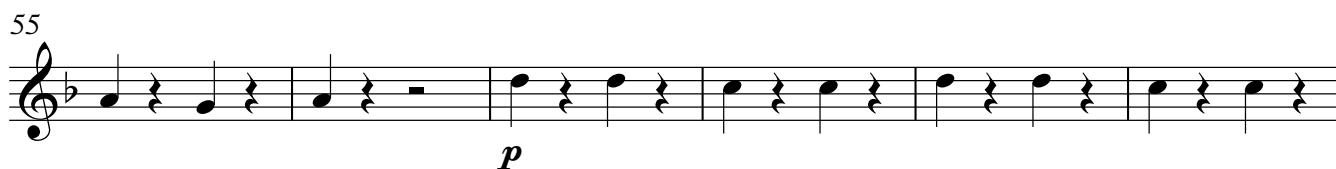
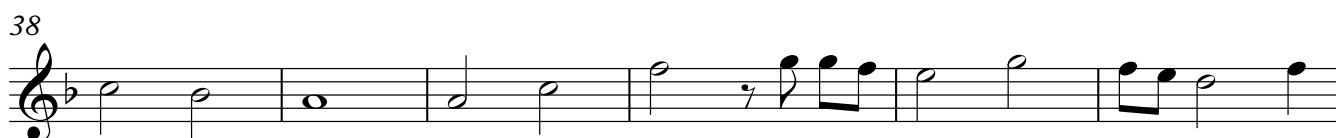
92

Flute 2

LEMON TREE

Fool's Garden

Allegro ♩=148





Clarinet in B \flat 1 **LEMONTREE**

Fool's Garden

Allegro 20 $\text{♩} = 148$

p

25

31 ♩ *ff*

36

41

46 ♩ *p*

52 *p*

59

68 *ff*

74 *p*

2

Clarinet in B \flat 1

LEMON TREE

80

ff

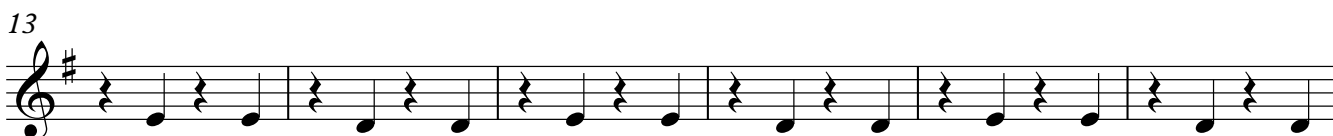
86

91

95

Clarinet in B \flat 2 **LEMONTREE**

Fool's Garden

Allegro $\text{♩}=148$ 

61

67

ff

73

p

79

85

90

94

Bass Clarinet in B \flat **LEMON TREE**

Fool's Garden

Allegro $\text{♩} = 148$

7 *mf*

13 *p*

19

25

31

37

42

48

54 *f* V.S.

LEMON TREE

60

66

71

76

82

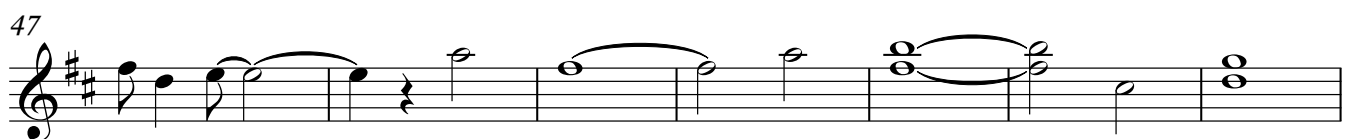
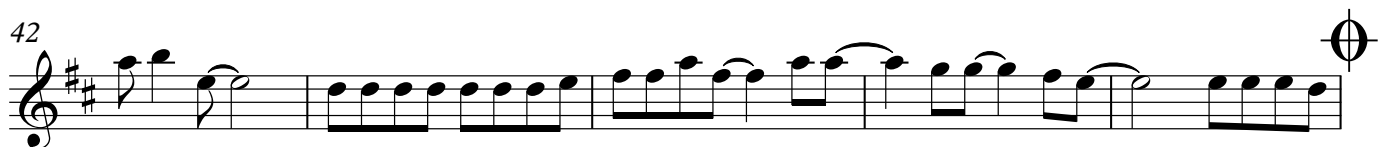
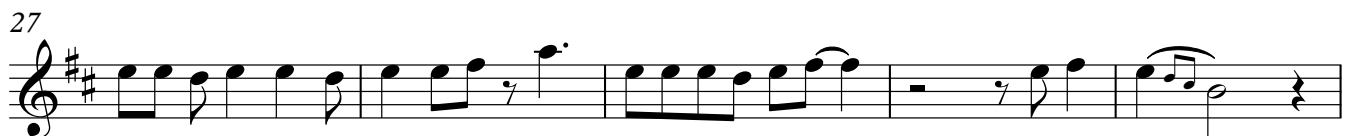
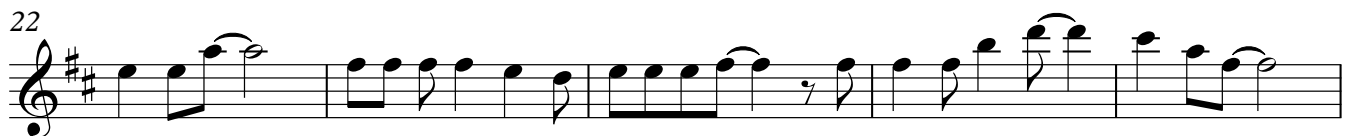
88

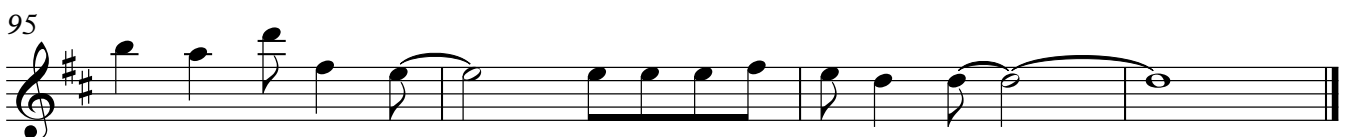
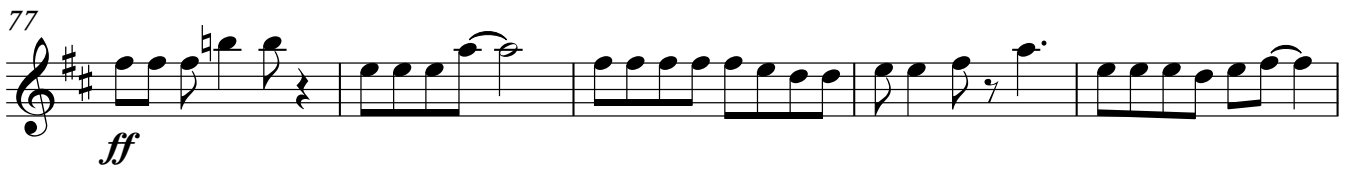
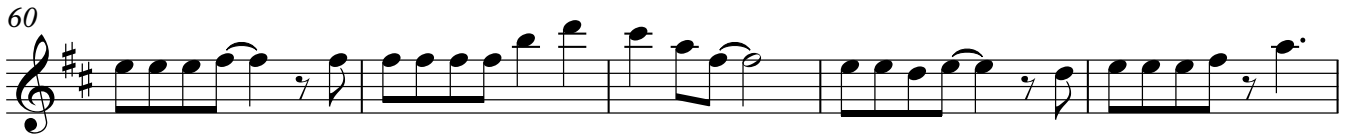
93

Alto Saxophone LEMON TREE

Fool's Garden

Allegro $\text{♩} = 148$





Tenor Saxophone LEMON TREE

Fool's Garden

Allegro ♩=148



V.S.



Baritone Saxophone

LEMON TREE

Fool's Garden

Allegro ♩=148



7



13



19



25



31



37



42



48



54



V.S.

LEMON TREE

Horn in F

Fool's Garden

Allegro 20 ♩=148

p

28

36

44

51

57

p

63

69

75

p

84

91

LEMON TREE

Horn in E \flat

Fool's Garden

Allegro 20 $\text{♩} = 148$

p

28

36

44

51

57

p

63

69

75

p

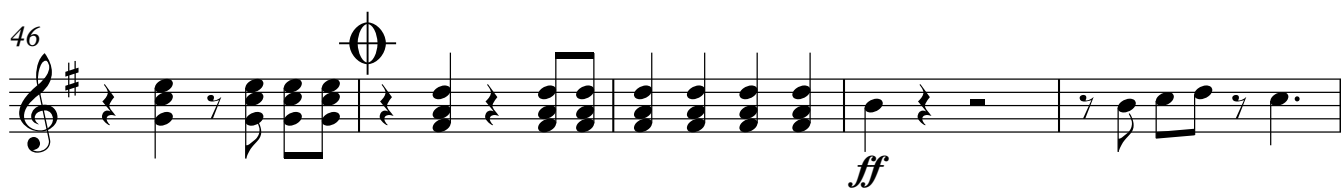
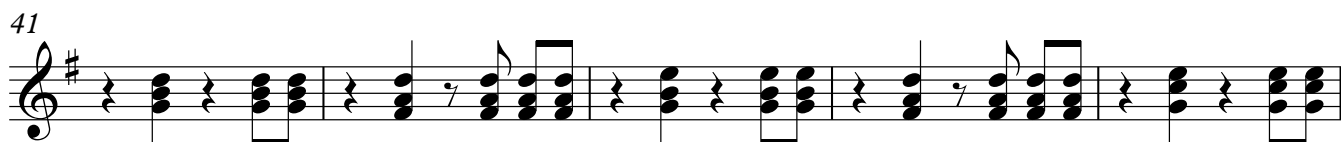
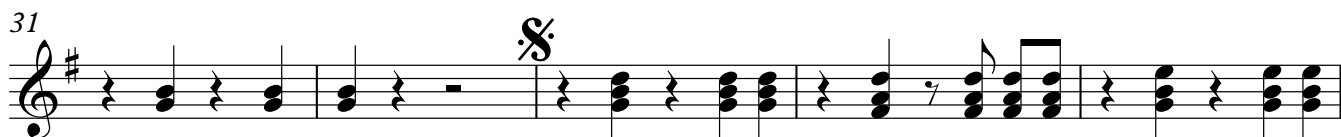
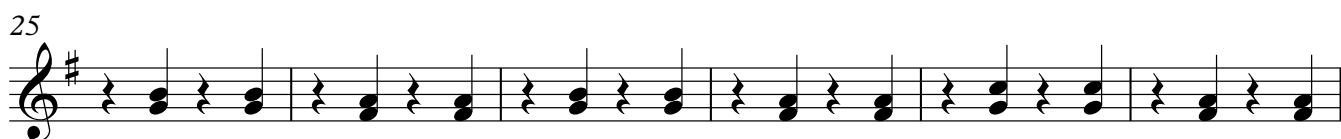
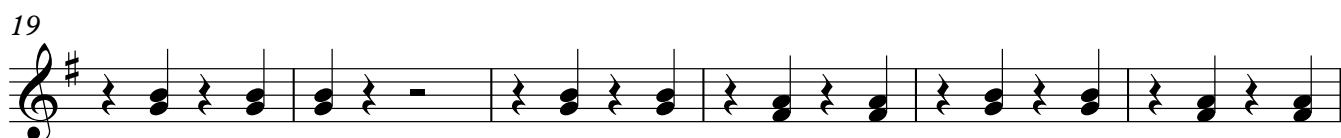
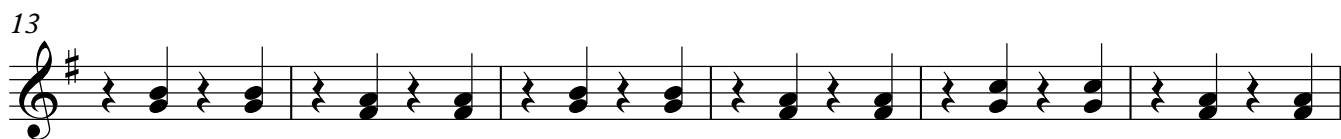
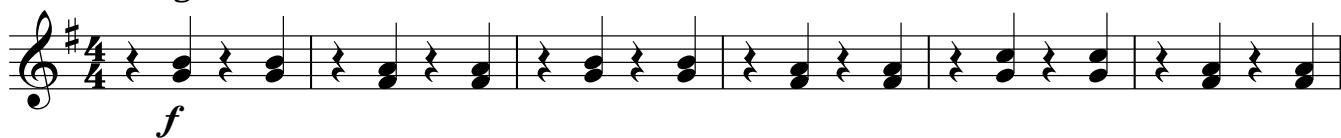
84

91

Trumpet in B \flat LEMON TREE

Fool's Garden

Allegro $\text{♩} = 148$



57

Trombone

LEMON TREE

Fool's Garden

Allegro

8

♩=148

1

13

19

25

31

37

42

48

54

60

66



71



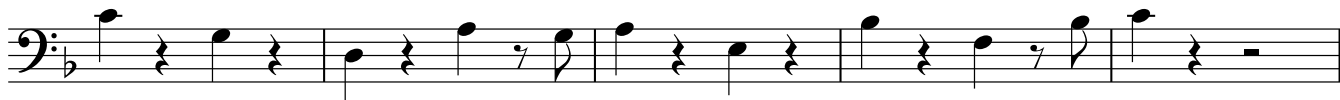
76



82



88



93

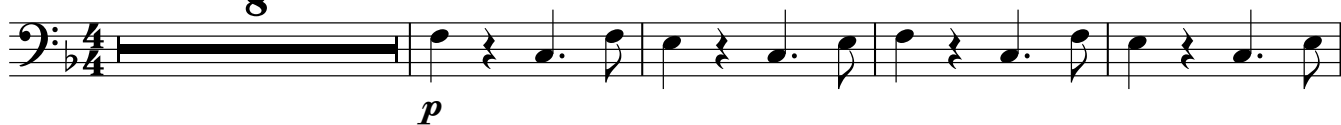


Euphonium

LEMON TREE

Fool's Garden

Allegro 8 ♩=148



13



19



25



31



37



42



48



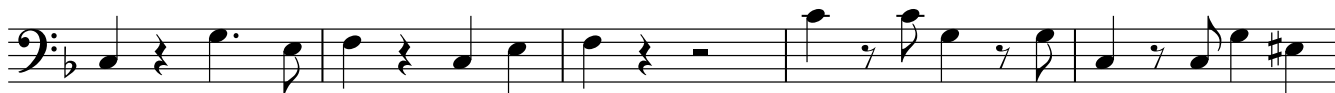
54



60



66



71



76



82



88



93



Tuba

LEMON TREE

Fool's Garden

Allegro 8 ♩=148



13



19



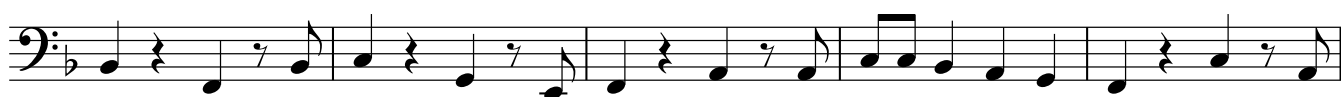
25



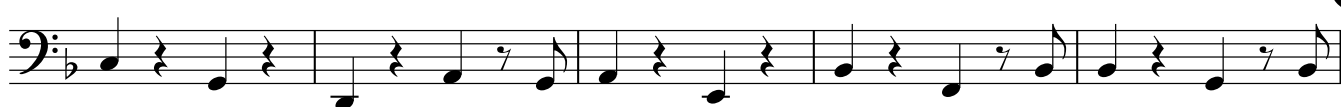
31



37



42



47



53



59



65



70



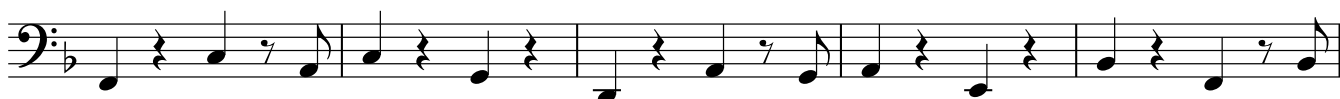
75



81



87



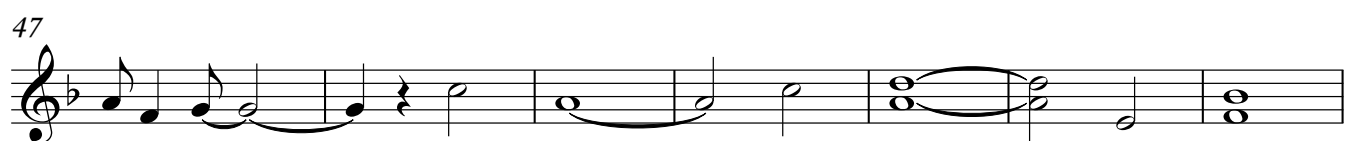
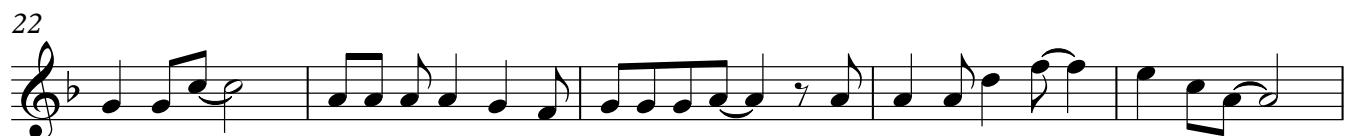
92



Glockenspiel

LEMON TREE

Fool's Garden

Allegro $\text{♩} = 148$ 

LEMON TREE

