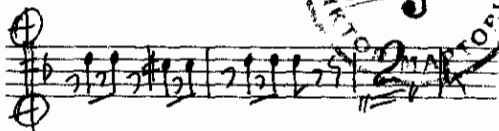
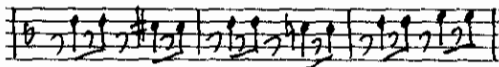
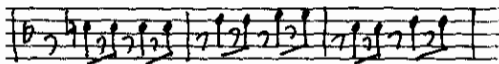
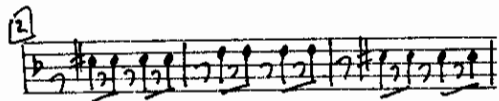
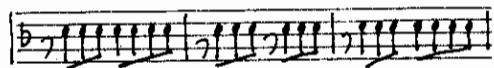
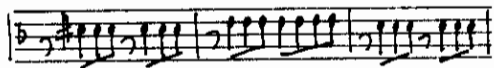
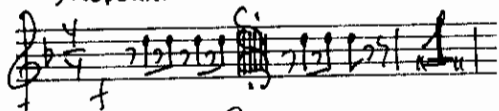


МАЛИКОВКА

Алт 3

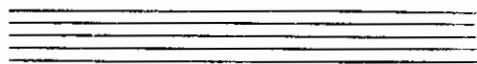
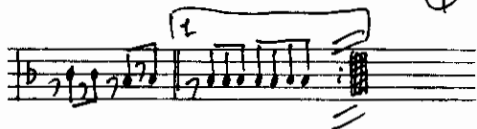
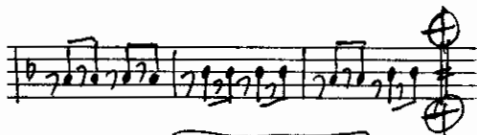
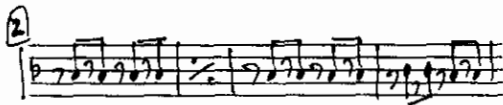
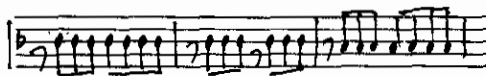
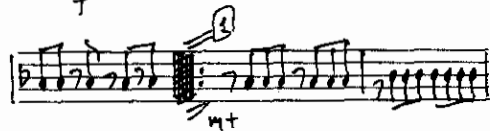
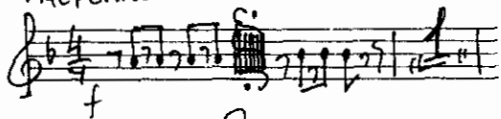
Умеренно



МАЛИНОВКА

АЛЫТ 2

УМЕРЕННО



МАЛИКОВКА

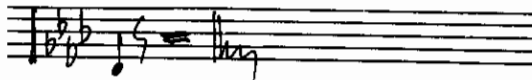
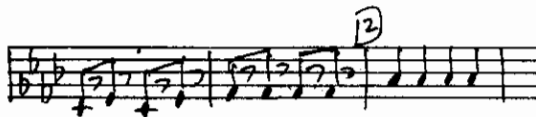
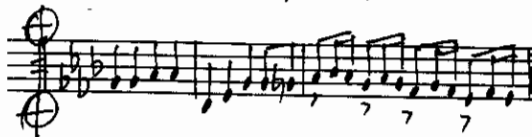
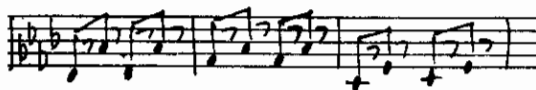
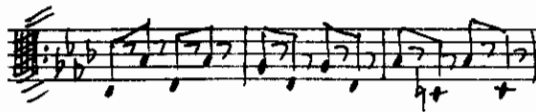
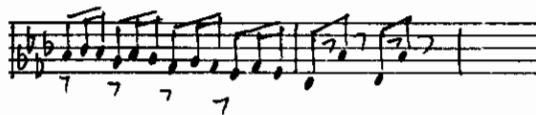
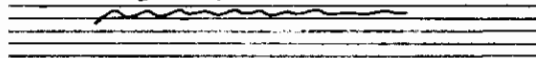
Handwritten musical score for 'МАЛИКОВКА'. The score is written on six staves in a single system. The key signature is one flat (B-flat) and the time signature is 4/4. The notation includes various rhythmic values, accidentals, and dynamic markings such as 'f' and 'fz'. There are also some performance instructions like 'Si' and '7'. A circled '1' is written above the third staff, and a circled '2' is written above the fifth staff.

БАРИТОН

Handwritten musical score for 'БАРИТОН'. The score is written on six staves in a single system. The key signature is one flat (B-flat) and the time signature is 4/4. The notation includes various rhythmic values, accidentals, and dynamic markings such as 'fz'. There are also some performance instructions like 'Si' and '7'. A circled '1' is written above the third staff, and a circled '2' is written above the fifth staff. A circular stamp is located in the lower right corner of the page, containing the text 'БУРЕЛА' and 'ВИКТОР МАРТОВИЧ' around a central treble clef and musical notes.

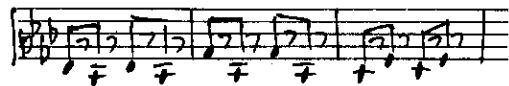
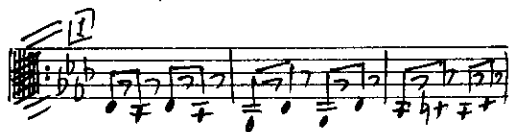
МАЛИНОВКА

Бас I

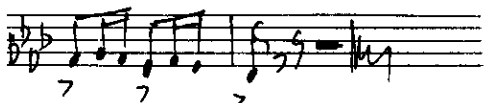
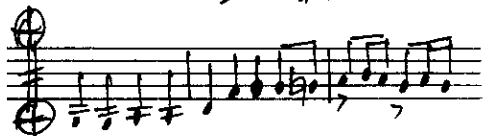


МАЛИНОВКА

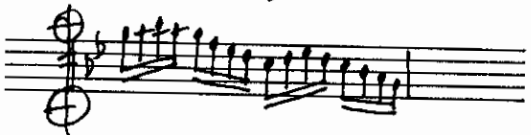
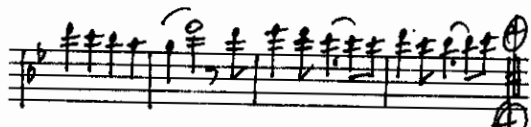
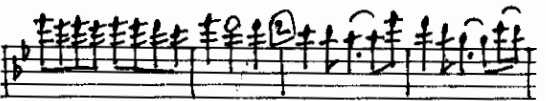
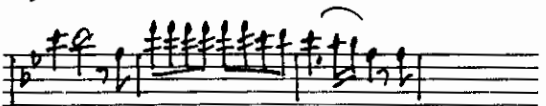
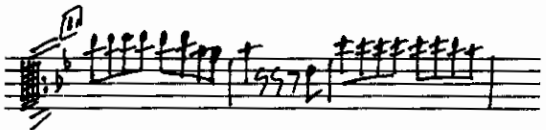
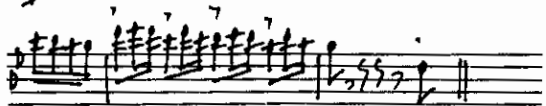
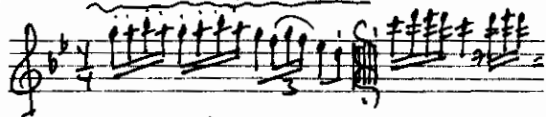
Умеренно



Бас 2

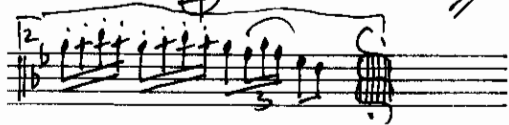
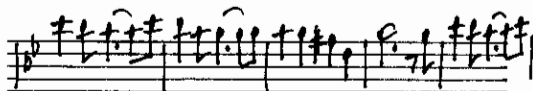
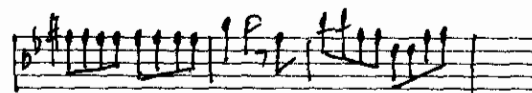
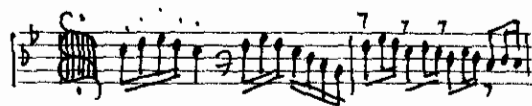


МАЛИНОВКА КЛАРНЕТ 1



МАЛИКОВКА

КЛАРНЕТ 2



МАЛИЦОВКА

Корнет 1

Умеренно.
mf

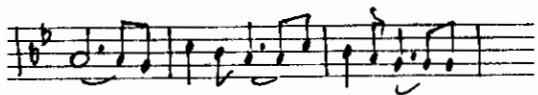
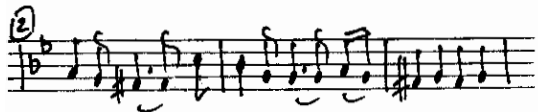
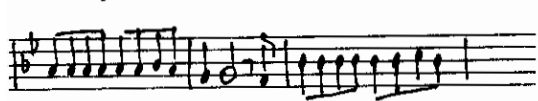
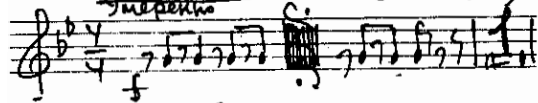
mf

2.

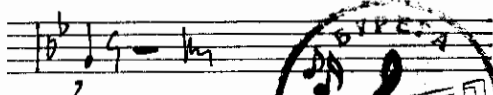
2.

МАЛИКОВКА (Фокстрот)

Умеренно



КОРСЕТ 2



МАЛИКОВКА

ТЕНОР 1

Умеренно

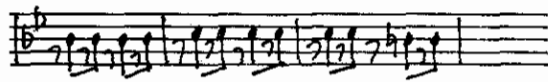
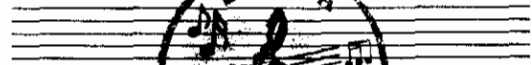
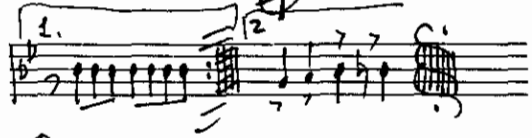
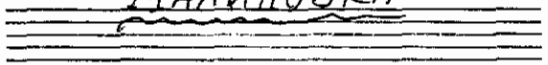
Handwritten musical score for the song "Маликовка" (Maliyovka). The score is written on five staves in G major (one sharp) and 4/4 time. It includes various musical notations such as eighth and sixteenth notes, rests, and dynamic markings like "mf". There are also some handwritten annotations like "4т." and circled numbers "1" and "2".

Handwritten musical score for the song "Маликовка" (Maliyovka), Tenor 1 part. The score is written on five staves in G major (one sharp) and 4/4 time. It includes various musical notations such as eighth and sixteenth notes, rests, and dynamic markings like "mf". There are also some handwritten annotations like "1", "2", and circled numbers "1" and "2".

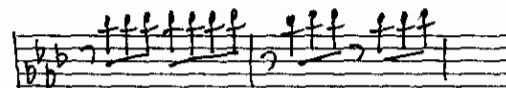
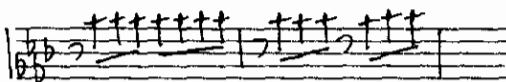
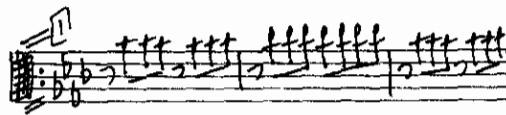
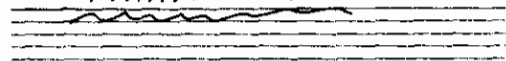


МАЛИНОВКА

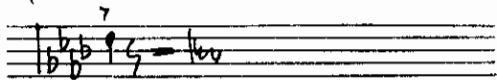
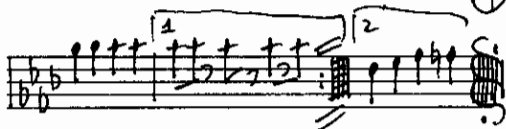
Тенор 2



МАЛИНОВКА



ТРОМБОН



МАЛИНОВКА ТРУБА

Handwritten musical notation for the first staff of the flute part, featuring a treble clef, a key signature of one flat, and a 4/4 time signature. The staff contains a series of sixteenth-note runs and a triplet of eighth notes.

Handwritten musical notation for the second staff of the flute part, featuring a bass clef and a key signature of one flat. The staff contains a series of eighth-note runs with fingerings indicated by numbers 7 and 7.

Handwritten musical notation for the third staff of the flute part, featuring a bass clef and a key signature of one flat. The staff contains a series of eighth-note runs with a circled '3' above a double bar line.

Handwritten musical notation for the fourth staff of the flute part, featuring a bass clef and a key signature of one flat. The staff contains a series of eighth-note runs.

Handwritten musical notation for the fifth staff of the flute part, featuring a bass clef and a key signature of one flat. The staff contains a series of eighth-note runs.

Handwritten musical notation for the first staff of the trumpet part, featuring a treble clef, a key signature of one flat, and a circled '2' above the staff. The staff contains a series of eighth-note runs.

Handwritten musical notation for the second staff of the trumpet part, featuring a bass clef and a key signature of one flat. The staff contains a series of eighth-note runs.

Handwritten musical notation for the third staff of the trumpet part, featuring a bass clef and a key signature of one flat. The staff contains a series of eighth-note runs with circled plus signs above the staff.

Handwritten musical notation for the fourth staff of the trumpet part, featuring a bass clef and a key signature of one flat. The staff contains a series of eighth-note runs with circled numbers 1 and 2 above the staff.

Handwritten musical notation for the fifth staff of the trumpet part, featuring a bass clef and a key signature of one flat. The staff contains a series of eighth-note runs with circled plus signs above the staff.

Handwritten musical notation for the sixth staff of the trumpet part, featuring a bass clef and a key signature of one flat. The staff contains a series of eighth-note runs with fingerings indicated by numbers 7 and 7.

