

КОНЦЕРТНЫЙ ВАЛЬС

для тенор-саксофона и фортепиано

Валерий САПАРОВ

Andante con moto (♩.=69-72)

f

8

1

mf tranguillo

2

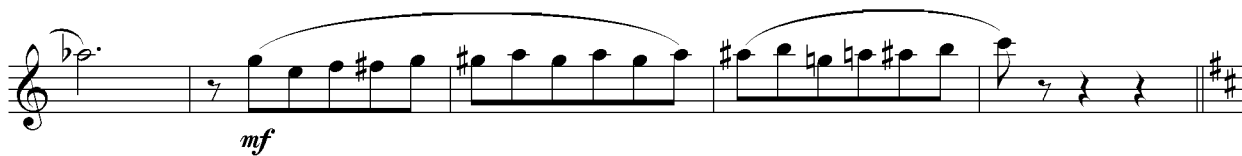
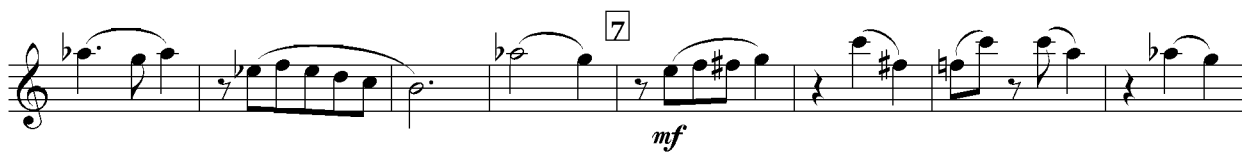
3

mf tranguillo

mf

4

mf cantabile



Musical staff with notes and slurs.

10

Musical staff with notes and slurs.

11

Musical staff with notes, slurs, and dynamics: *ff appassionato*, *sub.mf*, *p* *mf*

12

Musical staff with notes, slurs, and dynamics: *espress.* 9

13

Musical staff with notes, slurs, and dynamics: *f espress.*, *ff appassionato*

Musical staff with notes, slurs, and dynamics: *sub.mf*

Musical staff with notes, slurs, and dynamics: *rit.* 2

14 Tempo primo

Musical staff with a bar line and a fermata. 8

15

Musical staff 15, starting with a treble clef and a 7-measure rest. The first measure contains a quarter note G4 with a sharp sign, followed by eighth notes A4, B4, and C5. The second measure has a quarter note D5 with a sharp sign. The third measure has a quarter note E5 with a natural sign, followed by eighth notes D5 and C5. The fourth measure has a quarter note B4 with a flat sign, followed by eighth notes A4 and G4. The fifth measure has a quarter note G4, followed by eighth notes F4, E4, and D4. The sixth measure has a quarter note C4, followed by eighth notes B3, A3, and G3. The seventh measure has a quarter note F3, followed by eighth notes E3, D3, and C3. The dynamic marking *mf* and the tempo marking *tranguillo* are written below the staff.

Continuation of musical staff 15. The first measure has a quarter note G4 with a sharp sign, followed by eighth notes A4, B4, and C5. The second measure has a quarter note D5 with a sharp sign. The third measure has a quarter note E5 with a natural sign, followed by eighth notes D5 and C5. The fourth measure has a quarter note B4 with a flat sign, followed by eighth notes A4 and G4. The fifth measure has a quarter note G4, followed by eighth notes F4, E4, and D4. The sixth measure has a quarter note C4, followed by eighth notes B3, A3, and G3. The seventh measure has a quarter note F3, followed by eighth notes E3, D3, and C3. The dynamic marking *mf* and the tempo marking *tranguillo* are written below the staff.

16

Musical staff 16, starting with a treble clef and a 7-measure rest. The first measure contains a quarter note G4 with a sharp sign, followed by eighth notes A4, B4, and C5. The second measure has a quarter note D5 with a sharp sign. The third measure has a quarter note E5 with a natural sign, followed by eighth notes D5 and C5. The fourth measure has a quarter note B4 with a flat sign, followed by eighth notes A4 and G4. The fifth measure has a quarter note G4, followed by eighth notes F4, E4, and D4. The sixth measure has a quarter note C4, followed by eighth notes B3, A3, and G3. The seventh measure has a quarter note F3, followed by eighth notes E3, D3, and C3. The dynamic marking *mf* and the tempo marking *tranguillo* are written below the staff.

Continuation of musical staff 16. The first measure has a quarter note G4 with a sharp sign, followed by eighth notes A4, B4, and C5. The second measure has a quarter note D5 with a sharp sign. The third measure has a quarter note E5 with a natural sign, followed by eighth notes D5 and C5. The fourth measure has a quarter note B4 with a flat sign, followed by eighth notes A4 and G4. The fifth measure has a quarter note G4, followed by eighth notes F4, E4, and D4. The sixth measure has a quarter note C4, followed by eighth notes B3, A3, and G3. The seventh measure has a quarter note F3, followed by eighth notes E3, D3, and C3. The dynamic marking *mf* is written below the staff.

Continuation of musical staff 16. The first measure has a quarter note G4 with a sharp sign, followed by eighth notes A4, B4, and C5. The second measure has a quarter note D5 with a sharp sign. The third measure has a quarter note E5 with a natural sign, followed by eighth notes D5 and C5. The fourth measure has a quarter note B4 with a flat sign, followed by eighth notes A4 and G4. The fifth measure has a quarter note G4, followed by eighth notes F4, E4, and D4. The sixth measure has a quarter note C4, followed by eighth notes B3, A3, and G3. The seventh measure has a quarter note F3, followed by eighth notes E3, D3, and C3. The dynamic marking *mf* is written below the staff. A 4-measure rest is indicated by a horizontal line with the number 4 above it.