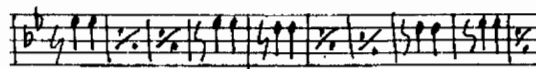
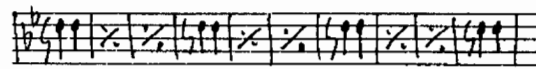
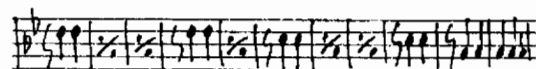
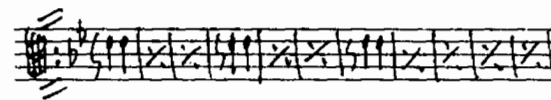
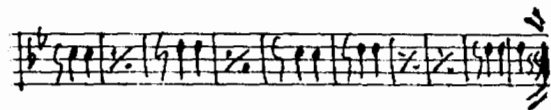
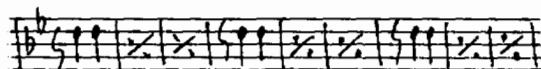
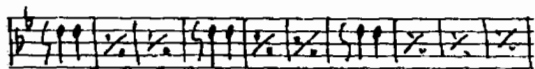


ВАЛЬС „РАЗБИТАЯ
ЖИЗНЬ“ М. КЮСС



Вальс „РАЗБИТАЯ ЖИЗНЬ“

АЛЬТ 2

Handwritten musical score for Alto 2 of the waltz "Broken Life". The score is written on ten staves, organized into five pairs. The key signature is one flat (B-flat), and the time signature is 3/4. The notation includes various rhythmic values (quarter, eighth, and sixteenth notes), rests, and dynamic markings such as f and mf . The score features several repeat signs, including first and second endings, and a double bar line with repeat dots. The music concludes with a final cadence marked with a double bar line and repeat dots.

ВАЛЬС „РАЗБИТАЯ ЖИЗНЬ“

М. КЮСС

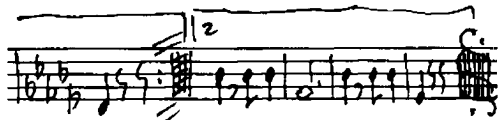
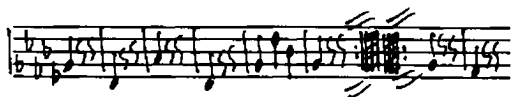
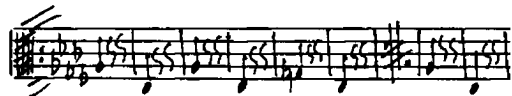
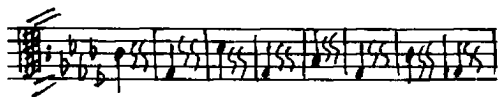
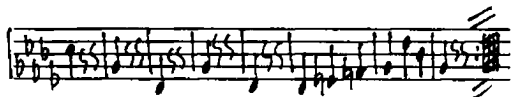
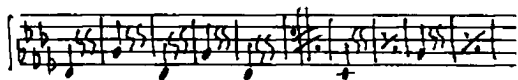
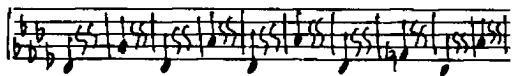
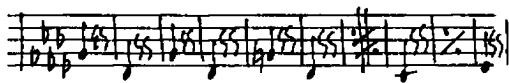
Handwritten musical score for the left hand of the waltz "Разбитая жизнь". The score is written on seven staves in a 3/4 time signature with a key signature of two flats (B-flat and E-flat). The notation includes various rhythmic values such as eighth and sixteenth notes, rests, and dynamic markings like 'f' and 'ff'. There are also some handwritten annotations and a large '5' at the end of the third staff.

БАРИТОН

Handwritten musical score for the baritone part of the waltz "Разбитая жизнь". The score is written on seven staves in a 3/4 time signature with a key signature of two flats. The notation includes various rhythmic values, rests, and dynamic markings. There are also some handwritten annotations and a large '5' at the end of the third staff.

ВАЛЬС „РАЗБИТАЯ ЖИЗНЬ“

Бас 1

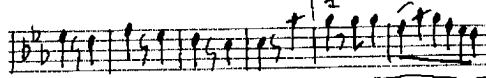
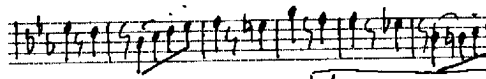
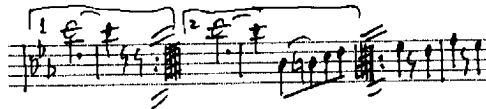
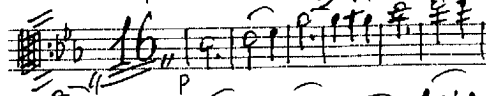
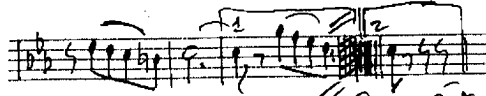
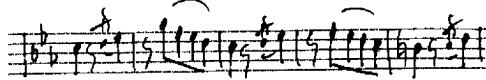
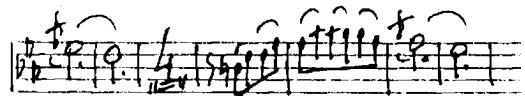
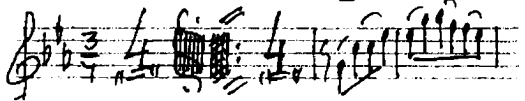


ВАЛЬС „РАЗБИТАЯ ЖИЗНЬ“

Бас 2

ВАЛЬС „РАЗБИТАЯ ЖИЗНЬ“
М. КЮСС

КЛАРКЕТ 1



ВАЛЬС „РАЗБИТАЯ ЖИЗНЬ“
М. КЮСС

Handwritten musical score for the first part of the waltz "Разбитая жизнь" by M. Küss. The score is written on seven staves in G major (one sharp) and 3/4 time. It begins with a treble clef and a key signature of one sharp (F#). The first staff contains a complex rhythmic introduction with many beamed notes. The second staff starts with a treble clef and a key signature of one flat (Bb), indicating a change in the key signature. The score includes various musical notations such as slurs, accents, and dynamic markings like 'p' (piano). The piece concludes with a double bar line and repeat signs.

КЛАРИНЕТ 2

Handwritten musical score for the second part of the waltz "Разбитая жизнь" by M. Küss, specifically for Clarinet 2. The score is written on seven staves in G major (one sharp) and 3/4 time. It begins with a treble clef and a key signature of one sharp (F#). The first staff contains a complex rhythmic introduction with many beamed notes. The second staff starts with a treble clef and a key signature of one flat (Bb), indicating a change in the key signature. The score includes various musical notations such as slurs, accents, and dynamic markings like 'p' (piano). The piece concludes with a double bar line and repeat signs.

ВАЛЬС „РАЗБИТАЯ ЖИЗНЬ“

М. КЮСС

Handwritten musical score for the first part of the waltz "Разбитая жизнь" by M. Küss. The score is written on seven staves. It begins with a treble clef, a key signature of two flats (B-flat and E-flat), and a 3/4 time signature. The music features a melodic line with various ornaments and a bass line with chords and a steady rhythm. There are several dynamic markings and phrasing slurs throughout the piece.

КОРНЕТ 1

Handwritten musical score for the first horn part of the waltz "Разбитая жизнь" by M. Küss. The score is written on seven staves. It begins with a treble clef, a key signature of two flats (B-flat and E-flat), and a 3/4 time signature. The music features a melodic line with various ornaments and a bass line with chords and a steady rhythm. There are several dynamic markings and phrasing slurs throughout the piece.

ВАЛЬС „РАЗБИТАЯ
ЖИЗНЬ“ М. КЮСС

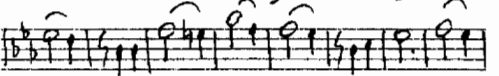
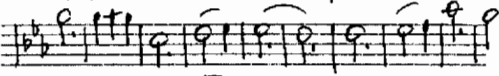
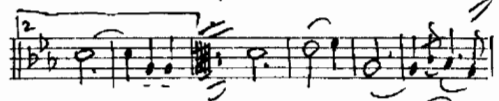
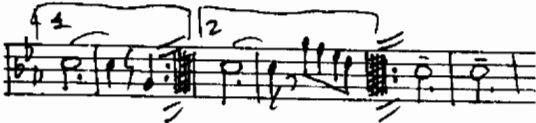
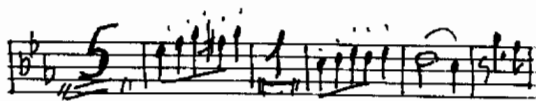
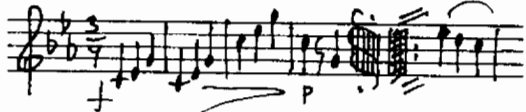
Handwritten musical score for the first part of the waltz. It consists of eight staves of music. The key signature is B-flat major (two flats). The time signature is 3/4. The music features a mix of eighth and sixteenth notes, often beamed together. There are several dynamic markings, including 'p' (piano) and 'f' (forte). The score includes various musical notations such as slurs, ties, and repeat signs.

Корнет 2

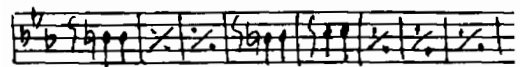
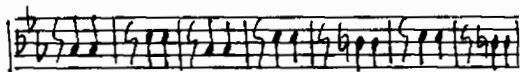
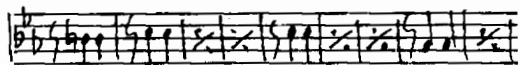
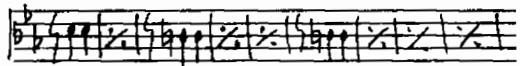
Handwritten musical score for the second part of the waltz, specifically for the Cornet 2 part. It consists of eight staves of music. The key signature is B-flat major (two flats). The time signature is 3/4. The music is characterized by a melodic line with many slurs and ties. There are dynamic markings such as 'p' (piano) and 'f' (forte). The score includes various musical notations such as slurs, ties, and repeat signs.

ВАЛЬС „РАЗБИТАЯ ЖИЗНЬ“

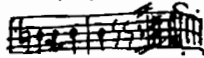
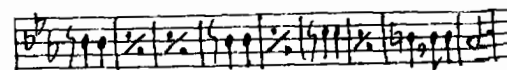
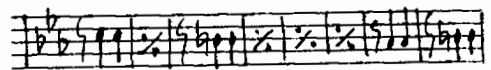
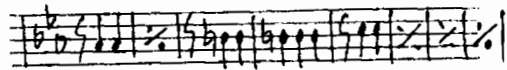
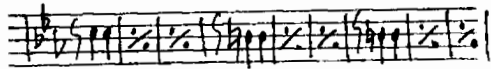
ТЕНОР 1



ВАЛЬС "РАЗБИТАЯ ЖИЗНЬ"

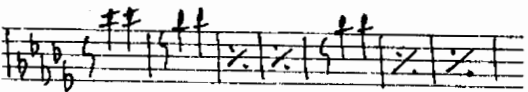
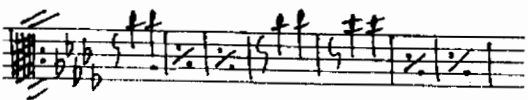
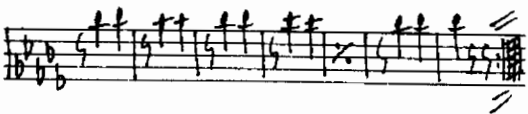
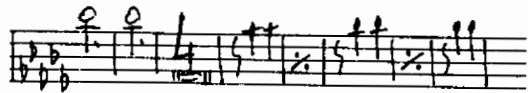
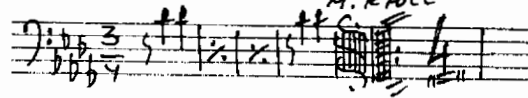


ТЕКОР 2

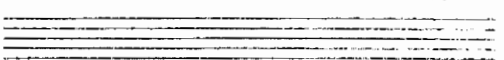
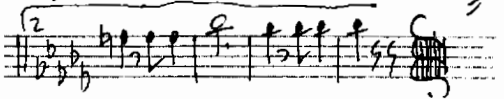
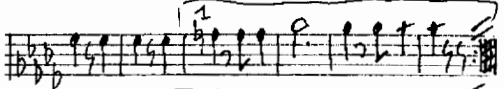
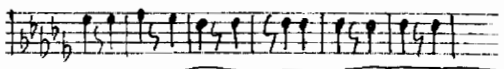
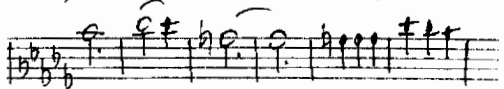
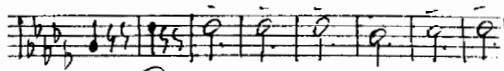


ВАЛЬС „РАЗБИТАЯ ЖИЗНЬ“

М. КЮСС



ТРОМБОН



Вальс „РАЗБИТАЯ ЖИЗНЬ“

Handwritten musical score for the left hand of a waltz. It consists of eight staves of music in 3/4 time, key of B-flat major. The notation includes various rhythmic values, slurs, and dynamic markings such as 'p' and 'mf'. The piece concludes with a double bar line and the number '16' written below it.

Труба

Handwritten musical score for the right hand of a waltz, specifically for the trumpet part. It consists of eight staves of music in 3/4 time, key of B-flat major. The notation includes various rhythmic values, slurs, and dynamic markings such as 'mf'. The piece concludes with a double bar line.

ВАЛЬС "РАЗБИТАЯ ЖИЗНЬ" ФЛЮТА

Handwritten musical score for flute, left column. It consists of ten staves of music. The notation includes various rhythmic values, slurs, and dynamic markings. The key signature is B-flat major (two flats). The time signature is 3/4. The music features a mix of eighth and sixteenth notes, often beamed together, and some rests. There are several repeat signs and first/second endings indicated by '1' and '2' above the staves.

Handwritten musical score for flute, right column. It consists of seven staves of music. The notation includes various rhythmic values, slurs, and dynamic markings. The key signature is B-flat major (two flats). The time signature is 3/4. The music features a mix of eighth and sixteenth notes, often beamed together, and some rests. There are several repeat signs and first/second endings indicated by '1' and '2' above the staves. The final staff is empty.