

Alto Saxophone

ВЕСЕННИЙ ВАЛЬС

А.ШКОЛЯР

3 15 *mf*

21 **1**

31 1. 2.

39 **2** 8 *f*

53 1. 2. **3** *mf*

61

70 **4** *mf*

79 *ff*

88 **5**

97 1. 2. *v*

Baritone

ВЕСЕННИЙ ВАЛЬС

А.ШКОЛЯР

3

mf

11

21 **1**

31 **1.** **2.**

39 **2** 8 *f*

53 **1.** **2.** **3** *mf*

61

70 **4** *mf*

79 *ff*

88 **5**

2

Baritone

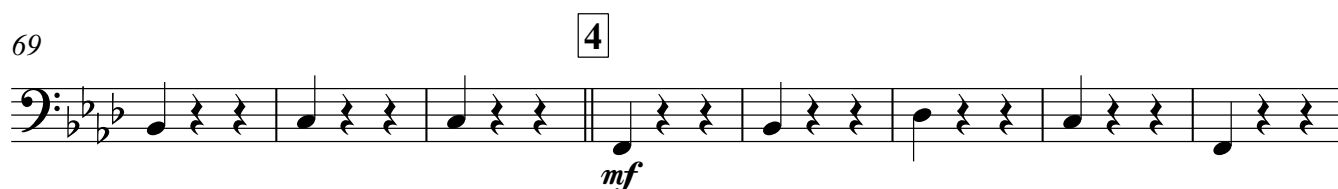
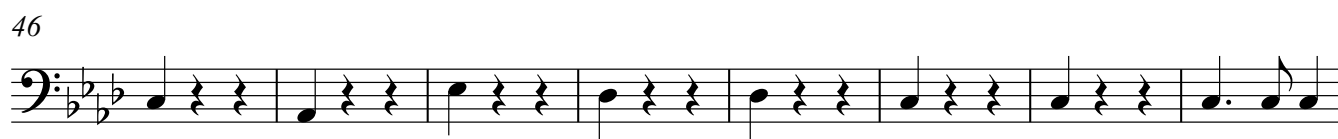
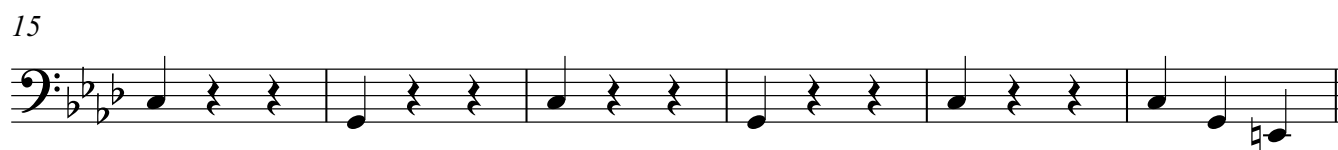
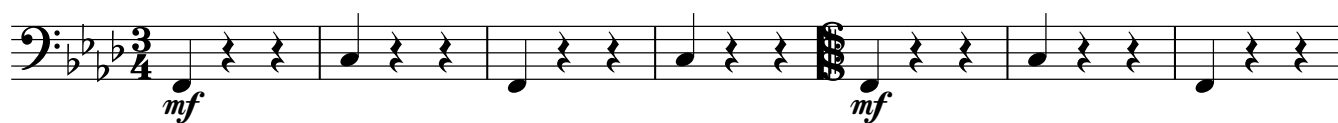
97

1. 2.

Bass in C

ВЕСЕННИЙ ВАЛЬС

А.ШКОЛЯР



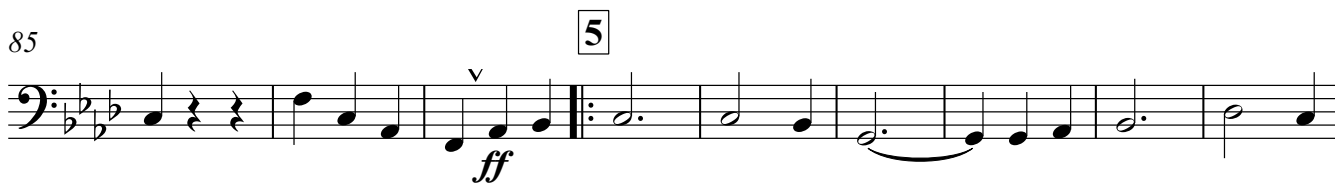
2

Bass in C

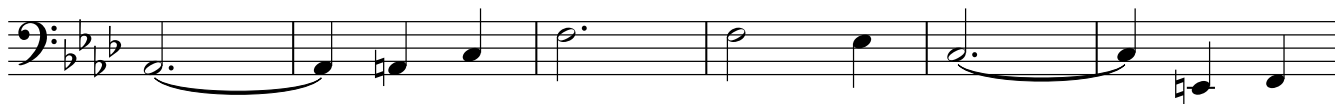
77



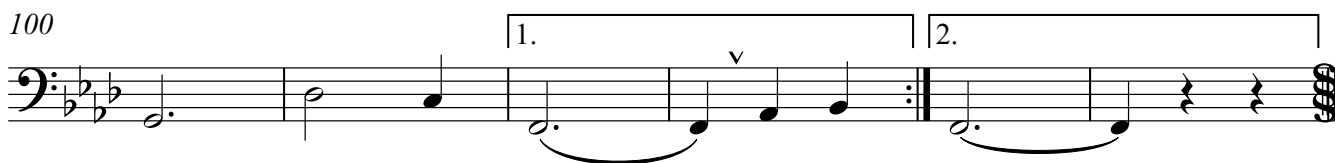
85



94



100



Clarinet in B \flat

ВЕСЕННИЙ ВАЛЬС

А.ШКОЛЯР

3

mf

11

21 1

31

1. 2. *f*

39 2

46

51

1. 2. *mf*

2

Clarinet in B \flat

56 **3**

64

72 **4**

mf

80

88 **5**

ff

95

101

1. 2.

Cornet in B \flat

ВЕСЕННИЙ ВАЛЬС

А.ШКОЛЯР

3 16

21 **1** 14 1. 2 2. *f*

39 **2**

46

52 1. 2.

56 **3** 16 **4** *mf*

78

87 **5** *ff*

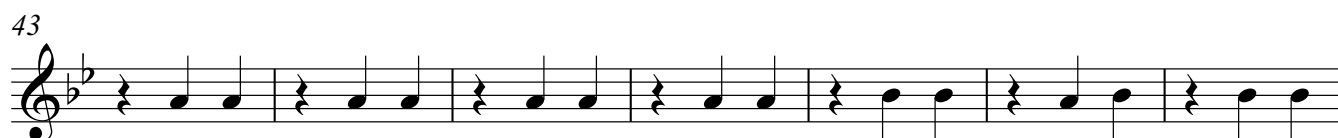
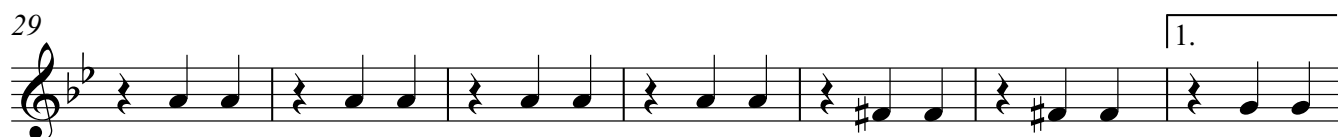
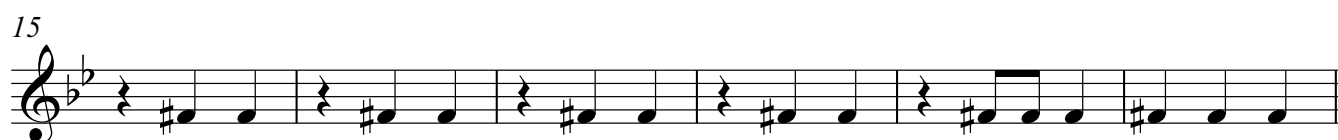
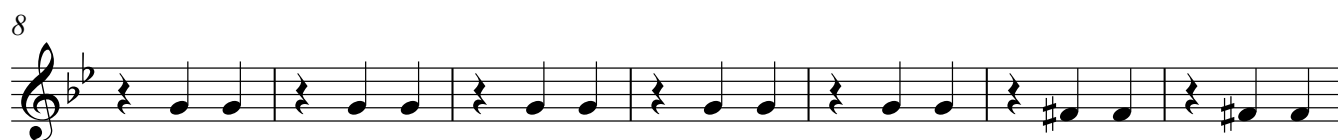
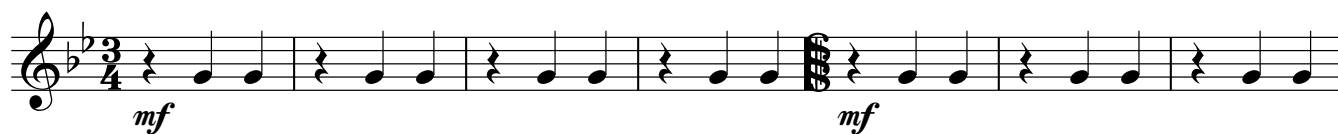
94

100 1. 2.

Euphonium

ВЕСЕННИЙ ВАЛЬС

А.ШКОЛЯР



2

Euphonium

56 3

mf

64

mf

72 4

mf

80

ff

88 5

mf

97

1. 2.

Flute

ВЕСЕННИЙ ВАЛЬС

А.ШКОЛЯР

3 16

21 **1** 14 1. 2 2. *f*

39 **2**

46

52 1. 2.

56 **3** 16 **4** *mf*

78

87 **5** *ff*

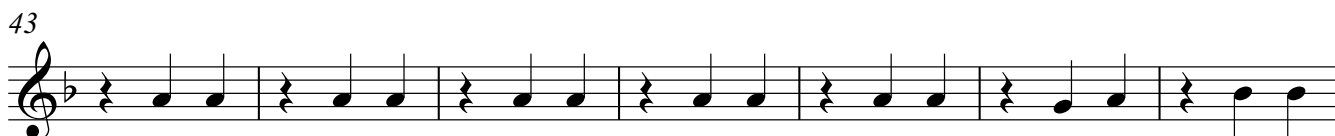
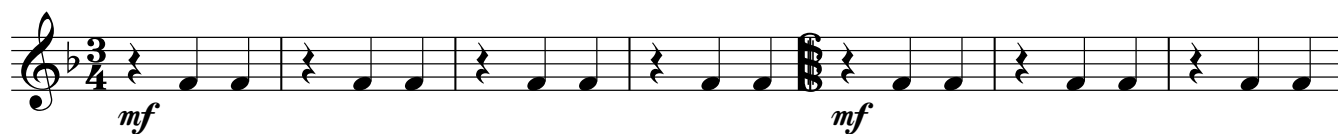
94

100 1. 2.

Horn in E \flat

ВЕСЕННИЙ ВАЛЬС

А.ШКОЛЯР



2

Horn in E♭

56 **3**

mf

64

72 **4**

mf

80

88 **5**

ff

95

101

1. 2.

Marching Bass Drum

ВЕСЕННИЙ ВАЛЬС

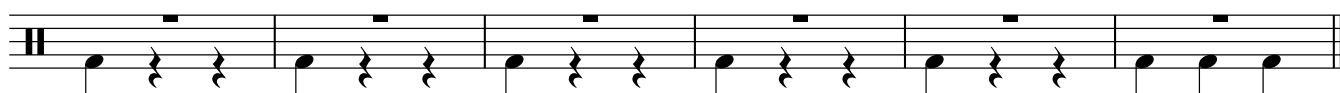
А.ШКОЛЯР



8



15

21 **1**

29



36



43



50

56 **3**

64

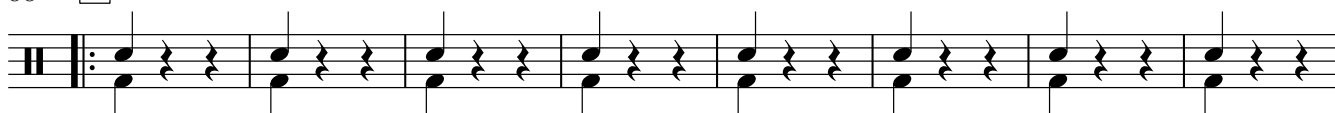


2

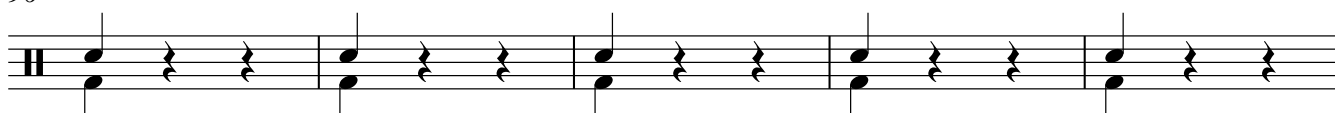
Marching Bass Drum

72 **4**

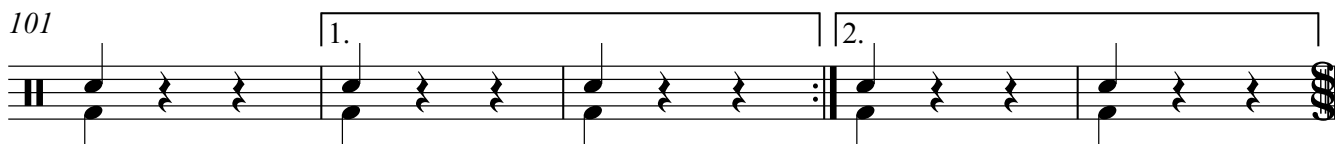
80

88 **5**

96



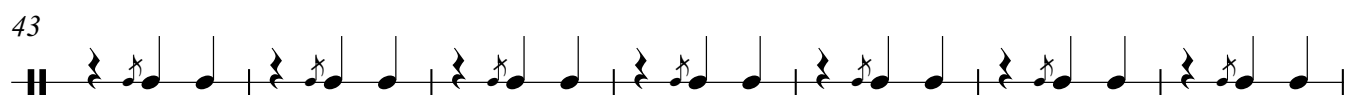
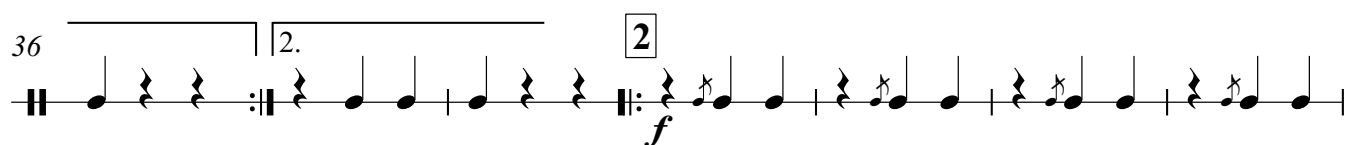
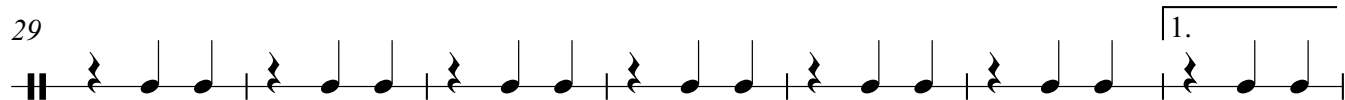
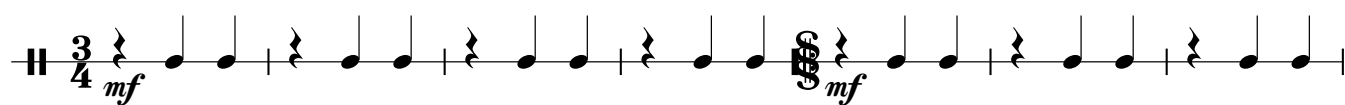
101



Tambourine

ВЕСЕННИЙ ВАЛЬС

А.ШКОЛЯР



2

Tambourine

56 3

mf

64

72 4

mf

80

88 5

ff

95

101

1. 2.

Tenor Saxophone

ВЕСЕННИЙ ВАЛЬС

А.ШКОЛЯР

3 15 *mf*

21 **1**

31 1. 2.

39 **2** 8 *f*

53 1. 2. **3** *mf*

61

70 **4** *mf*

79 *ff*

88 **5**

97 1. 2.

Trumpet in B \flat

ВЕСЕННИЙ ВАЛЬС

А.ШКОЛЯР

3 16

21 **1** 14 1. 2 2. *f*

39 **2**

46

52 1. 2.

56 **3** 16 **4** *mf*

78

87 **5** *ff*

94

100 1. 2.