

Флейта

# ХОРАЛ

Д. Палестрина  
инстр. А. Школяр

♩=60

*p*

**1**

**2**

**3** *p* **4** *f*

*rit.*

*p*

Кларнет В $\flat$  1

# ХОРАЛ

Д. Палестрина  
инстр. А. Школяр

♩=60

*p*

1

2

3

*p* *f*

4

*p*

rit.

Кларнет В $\flat$  2

# ХОРАЛ

Д. Палестрина  
инстр. А. Школяр

$\text{♩} = 60$

*p*

1

2

3

*p*

4

*f* *p* rit.

Альт-саксофон 1

# ХОРАЛ

Д. Палестрина  
инстр. А. Школяр

♩=60

*p*

1

2

*p*

3

4

*f*

*p*

rit.

Альт-саксофон 2

# ХОРАЛ

Д. Палестрина  
инстр. А. Школяр

♩=60

*p*

1

2

*p*

3

4

*f* *p* rit. . . . .

Тенор-саксофон

# ХОРАЛ

Д. Палестрина  
инстр. А. Школяр

$\text{♩} = 60$

*p*

1

2

*p*

3

4

*f* *p* rit. . . . .

Trumpet B $\flat$ 

# ХОРАЛ

Д. Палестрина  
инстр. А. Школяр

$\text{♩} = 60$

**1**

**2**

**3** **4**

*p* *f*

rit. . . . .

*p*

Треугольник Малый барабан

# ХОРАЛ

Д. Палестрина  
инстр. А. Школяр

♩=60

4 1 тр-к *p*

2 4 3 4 4 тар. *f*

rit. 2



Тарелки Большой барабан

**ХОРАЛ***Д. Палестрина  
инстр. А. Школяр*

♩=60

4 1 4 2 4

3 3 4 rit. 2

*f*

Корнет В $\flat$  1**ХОРАЛ**Д. Палестрина  
инстр. А. Школяр

$\text{♩} = 60$

**1**

**2**

**3** **4**

*p* *f*

rit.

*p*

Корнет В $\flat$  2

# ХОРАЛ

Д. Палестрина  
инстр. А. Школяр

$\text{♩} = 60$

First staff of music in G minor, 4/4 time. It begins with a treble clef, a key signature of two flats (B-flat and E-flat), and a 4/4 time signature. The first measure contains a whole note G3. The second measure contains a whole note F3. The third measure contains a whole note E3. The fourth measure contains a whole note D3. The fifth measure contains a whole note C3. The piece starts with a piano (*p*) dynamic and a hairpin crescendo over the first two measures.

Second staff of music, marked with a first ending bracket (1). It begins with a treble clef, a key signature of two flats, and a 4/4 time signature. The first measure contains a whole note G3. The second measure contains a whole note F3. The third measure contains a whole note E3. The fourth measure contains a whole note D3. The fifth measure contains a whole note C3. The sixth measure contains a whole note B2. The seventh measure contains a whole note A2. The piece ends with a piano (*p*) dynamic and a hairpin decrescendo over the last two measures.

Third staff of music, marked with a second ending bracket (2). It begins with a treble clef, a key signature of two flats, and a 4/4 time signature. The first measure contains a whole note G3. The second measure contains a whole note F3. The third measure contains a whole note E3. The fourth measure contains a whole note D3. The fifth measure contains a whole note C3. The sixth measure contains a whole note B2. The seventh measure contains a whole note A2. The piece ends with a piano (*p*) dynamic and a hairpin decrescendo over the last two measures.

Fourth staff of music, marked with a third ending bracket (3). It begins with a treble clef, a key signature of two flats, and a 4/4 time signature. The first measure contains a whole note G3. The second measure contains a quarter note F3, followed by a quarter note E3. The third measure contains a whole note D3. The fourth measure contains a whole note C3. The fifth measure contains a whole note B2. The sixth measure contains a whole note A2. The seventh measure contains a whole note G2. The piece starts with a piano (*p*) dynamic and a hairpin crescendo over the first two measures.

Fifth staff of music, marked with a fourth ending bracket (4). It begins with a treble clef, a key signature of two flats, and a 4/4 time signature. The first measure contains a whole note G3. The second measure contains a whole note F3. The third measure contains a whole note E3. The fourth measure contains a whole note D3. The fifth measure contains a whole note C3. The sixth measure contains a whole note B2. The seventh measure contains a whole note A2. The eighth measure contains a whole note G2. The piece starts with a forte (*f*) dynamic, transitions to piano (*p*) in the fifth measure, and includes a ritardando (*rit.*) marking over the last two measures.

АЛЬТ Е♭ 1

# ХОРАЛ

Д. Палестрина  
инстр. А. Школяр

♩=60

First staff of music in 4/4 time, key of E-flat major. It begins with a treble clef, a key signature of one flat, and a 4/4 time signature. The first measure contains a whole note chord of E-flat, G, and B-flat. The following three measures contain half notes: E-flat, G, B-flat, and A. The piece starts with a piano (*p*) dynamic and includes a crescendo hairpin.

Second staff of music, marked with a first ending bracket [1]. It contains half notes: A, G, F, E, D, C, B, and A. The piece concludes with a piano (*p*) dynamic and a decrescendo hairpin.

Third staff of music, marked with a second ending bracket [2]. It contains half notes: A, G, F, E, D, C, B, and A. The piece concludes with a piano (*p*) dynamic and a decrescendo hairpin.

Fourth staff of music, marked with a third ending bracket [3]. It begins with a piano (*p*) dynamic and includes a decrescendo hairpin. The notes are: A, G, F, E, D, C, B, and A.

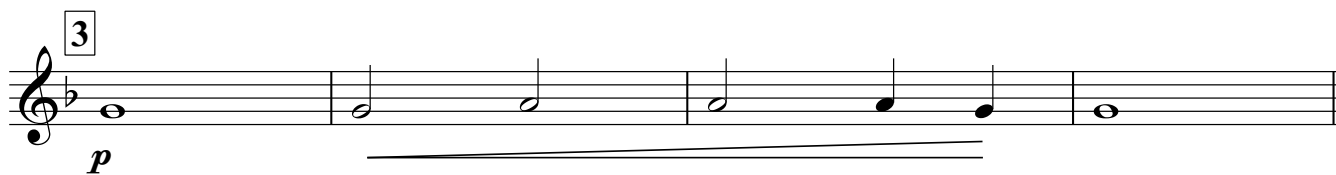
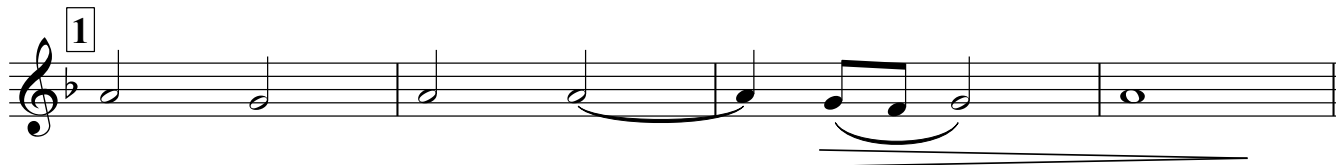
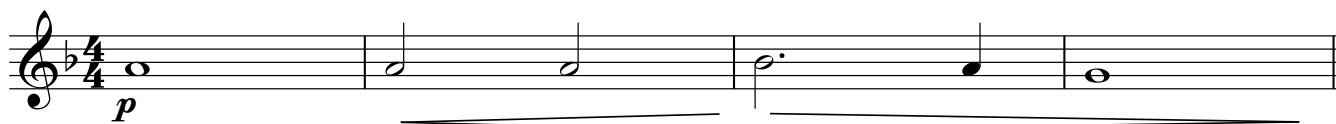
Fifth staff of music, marked with a fourth ending bracket [4]. It begins with a forte (*f*) dynamic and includes a decrescendo hairpin that ends with a piano (*p*) dynamic. The notes are: A, G, F, E, D, C, B, and A. The piece concludes with a ritardando (*rit.*) marking and a fermata over the final note.

АЛЬТ Е♭ 2

## ХОРАЛ

Д. Палестрина  
инстр. А. Школяр

♩=60



Тенор 1

# ХОРАЛ

Д. Палестрина  
инстр. А. Школяр

♩=60

*p*

1

2

*p*

3

4

*f* *p* rit. . . . .

Тенор 2

# ХОРАЛ

Д. Палестрина  
инстр. А. Школяр

$\text{♩} = 60$

*p*

5 **1**

9 **2**

13 **3** **4** *f*

18 *rit.* *p*

Baritone

# ХОРАЛ

Д. Палестрина  
инстр. А. Школяр

$\text{♩} = 60$

*p*

1

2

3

4

*f* *p* rit. . . . .



Bass 1

# ХОРАЛ

Д. Палестрина  
инстр. А. Школяр

$\text{♩} = 60$

**1**

*p*

**2**

*p*

**3**

**4**

*f* *p* rit.

Bass 2

# ХОРАЛ

Д. Палестрина  
инстр. А. Школяр

$\text{♩} = 60$

1

2

3

4

*p*

*p*

*f*

*p*

rit. . . . .