

Тромбон соло

Концертино для тромбона с духовым оркестром

Давид Ф.

Инструментовка Соколовского И. Е.

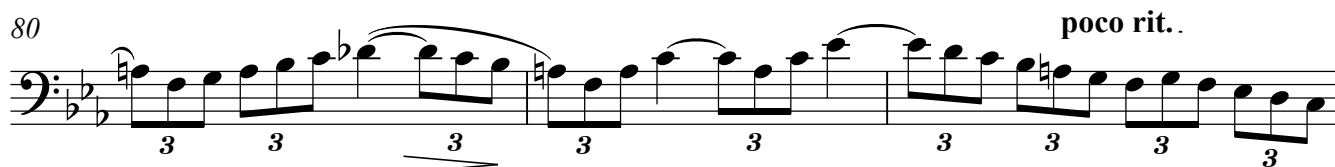
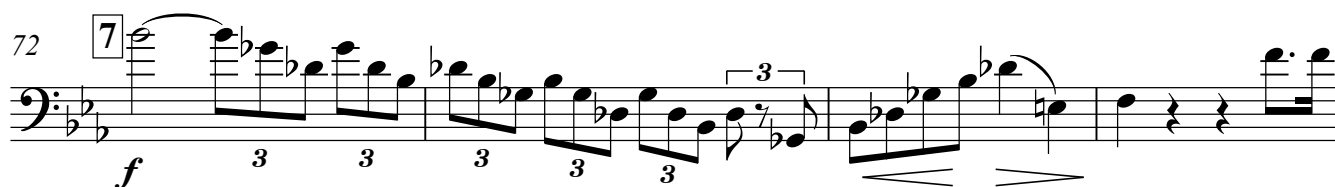
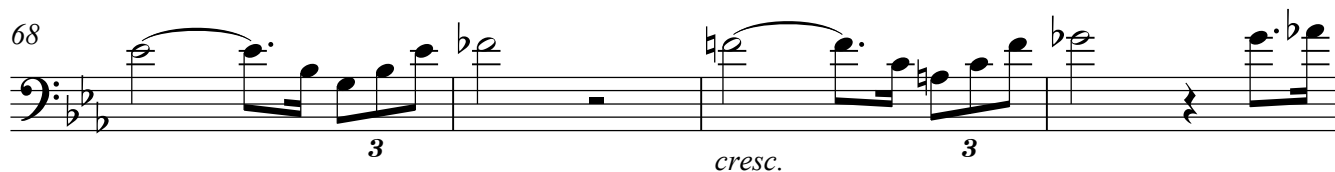
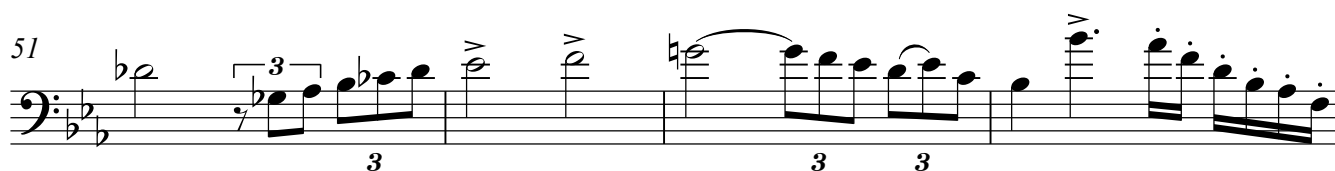
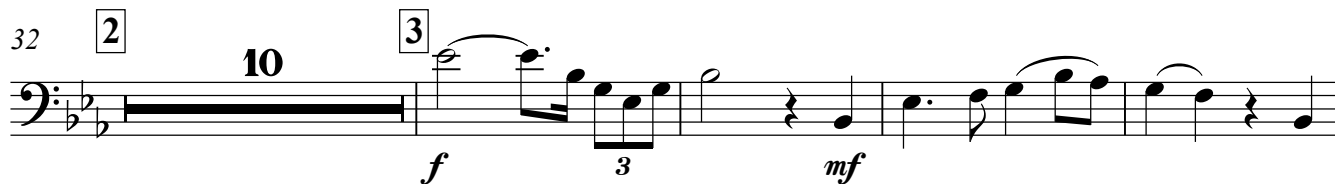
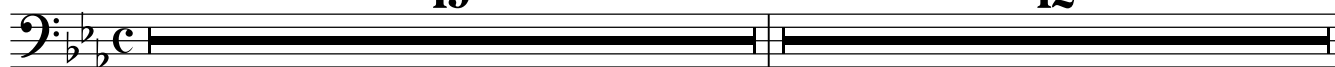
Allegro maestoso

♩=114

19

1

12



Тромбон соло

83 **9** a tempo $\text{♩} = 114$ **7** **10**

mf dolce

95

100 **11**

mf 3 3 3 3

104 **3** **3** **3** **3** **3**

p cresc. f

108 **12**

f 3 3 3 3 3 3

112 3 3 3 3 3 3 3 3

115 **3** **3** **3** **3** **3** **3**

cresc. f

118 **13**

121 *tr* *tr*

mf 3 3

126 **14**

f

Тромбон соло

129 15 7

f

Detailed description: Musical staff 129-137. Starts with a measure rest. A melodic line begins in measure 130, marked with a box '15'. It features a series of eighth notes with a descending contour, ending with a half note. A dynamic marking *f* is placed below the staff. A fermata is placed over the final note. The staff ends with a measure rest and a box '7'.

138 16 8 17 6 18 7

Detailed description: Musical staff 138-158. Consists of three measures of whole rests. Above the staff, boxes containing the numbers 16, 17, and 18 are placed over the first, second, and third measures respectively. Above the first measure is the number 8, above the second is 6, and above the third is 7. The staff ends with a measure rest and a box '7'.

Quasi recitativo

159 19 accel.

f

Detailed description: Musical staff 159-161. Starts with a measure rest. A melodic line begins in measure 160, marked with a box '19'. It features a series of eighth notes with a descending contour, ending with a half note. A dynamic marking *f* is placed below the staff. The tempo marking *accel.* is placed above the staff. A fermata is placed over the final note.

162 $\text{♩} = 80$ rit. $\text{♩} = 62$ $\text{♩} = 87$

Detailed description: Musical staff 162-165. Starts with a measure rest. A melodic line begins in measure 163, marked with a box '20'. It features a series of eighth notes with a descending contour, ending with a half note. A dynamic marking *f* is placed below the staff. The tempo marking *rit.* is placed above the staff. The tempo markings $\text{♩} = 80$, $\text{♩} = 62$, and $\text{♩} = 87$ are placed above the staff.

166 $\text{♩} = 66$ rit. $\text{♩} = 52$

f

Detailed description: Musical staff 166-168. Starts with a measure rest. A melodic line begins in measure 167, marked with a box '21'. It features a series of eighth notes with a descending contour, ending with a half note. A dynamic marking *f* is placed below the staff. The tempo marking *rit.* is placed above the staff. The tempo markings $\text{♩} = 66$ and $\text{♩} = 52$ are placed above the staff. A fermata is placed over the final note.

Andante, marcia funebre

169 20 $\text{♩} = 66$ 21 8

mf

Detailed description: Musical staff 169-180. Starts with a measure rest. A melodic line begins in measure 170, marked with a box '20'. It features a series of eighth notes with a descending contour, ending with a half note. A dynamic marking *mf* is placed below the staff. The tempo marking $\text{♩} = 66$ is placed above the staff. A box '21' is placed above the second measure. The staff ends with a measure rest and a box '8'.

181 f

Detailed description: Musical staff 181-186. Starts with a measure rest. A melodic line begins in measure 182, marked with a box '22'. It features a series of eighth notes with a descending contour, ending with a half note. A dynamic marking *f* is placed below the staff.

187 22 mf cresc.

Detailed description: Musical staff 187-191. Starts with a measure rest. A melodic line begins in measure 188, marked with a box '22'. It features a series of eighth notes with a descending contour, ending with a half note. A dynamic marking *mf* is placed below the staff. The tempo marking *cresc.* is placed above the staff.

192 3 3 f mf

Detailed description: Musical staff 192-195. Starts with a measure rest. A melodic line begins in measure 193, marked with a box '23'. It features a series of eighth notes with a descending contour, ending with a half note. A dynamic marking *f* is placed below the staff. A dynamic marking *mf* is placed below the staff.

196 23 2

Detailed description: Musical staff 196-200. Consists of three measures of whole rests. Above the staff, a box containing the number 23 is placed over the first measure. The staff ends with a measure rest and a box '2'.

4

Тромбон соло

199

p dolce

205 **24**

210

214 **25**

220 **26**

mf

226

f mp

230 **27** **Allegro maestoso** $\text{♩} = 114$ **11**

p

246 **28**

f 3 mp 3

251

mf 3 cresc. 3

255

3 3 3

259 **29** **4** **30**

f 3 dim. 3

Тромбон соло

5

267 31

mp

271

cresc.

276 32

f

279

>

283 33

f

286 *poco rit.* 34 *a tempo* ♩=114

f

295 35

mf

301

306 36

309

f

V.S.

Тромбон соло

313 37

mf 3 3 3 3 3 3 3 3

317 3 3 3 3 3 3 3 3 *cresc.*

321 38 *f*

326

330 39 8 *mf* *f*

340 40

345 3

350 3 3 3 3 3 3 3 3 *tr*

354 41 3 3

358 3 3 3 3 *fp* \leftarrow *f*