

Princess Leia

John Williams
Arrangement by Gibson corp.

Andante con moto

Baritone

4

1 **Andante** 10

2 **Andante con moto** 3

3 **a tempo** 9

4 **Piu mosso** 5

5 **a tempo** 4

Piu mosso 5

rit.

6 **a tempo**

7 7 *rit.*

f

8 5 1

Princess Leia

John Williams
Arrangement by Gibson corp.

Andante con moto

4

1

Andante

10

2

Andante con moto

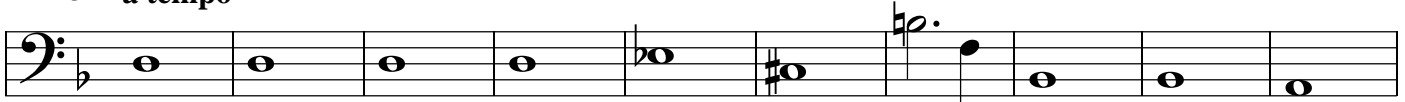
3

Bass 1

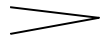


p

3 a tempo



mf

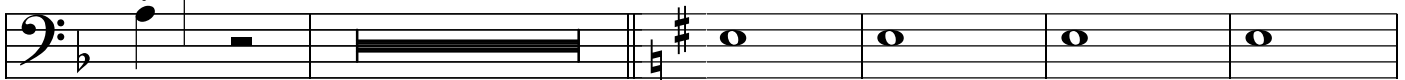


4 Piu mosso

4

5

a tempo



mf

mf

Piu mosso



rit.



6 a tempo



f

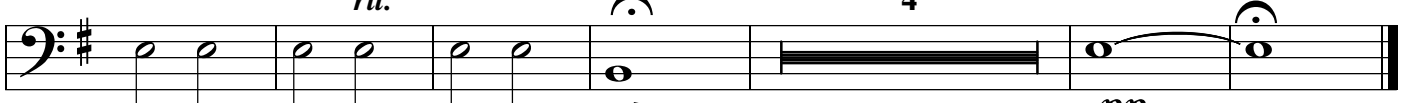
7 Con moto

accelerando



8 Rubato

4



rit.

pp

Princess Leia

John Williams
Arrangement by Gibson corp.

Andante con moto 4 1 **Andante** 10 2 **Andante con moto** 3 Tuba 1

Bass 2

3 a tempo *p*

4 Piu mosso 4 5 **a tempo** *mf* >

5 **Piu mosso** *mf* *mf* *rit.*

6 a tempo tuba 2 *f*

7 Con moto Tuba 1 *mf* *accelerando*

8 Rubato 4 Tuba 1 *pp* >

Princess Leia

John Williams
Arrangement by Gibson corp.

Andante con moto

Andante

Andante con moto

Bass Drum

$\frac{4}{4}$

4

1

10

2

3

a tempo

Piu mosso

a tempo

Piu mosso

3

9

4

5

5

4

6

a tempo

Con moto

6

2

7

2

4

Andante

Rubato

8

2

2

Princess Leia

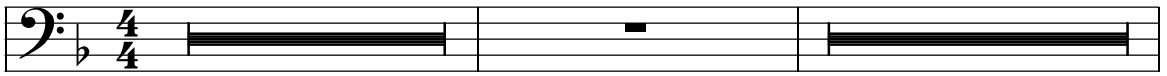
John Williams
Arrangement by Gibson corp.

Andante con moto

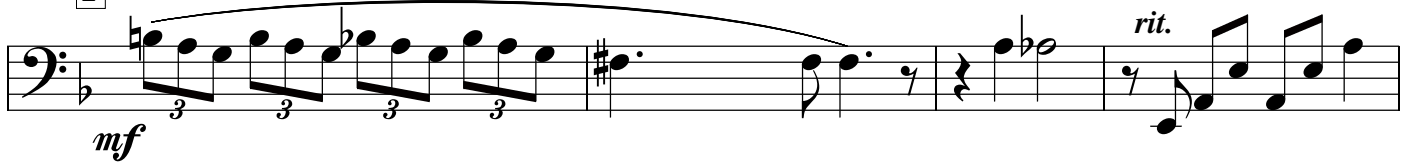
1 Andante

4

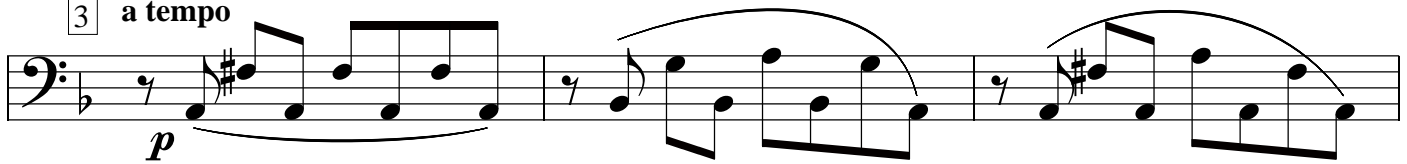
10

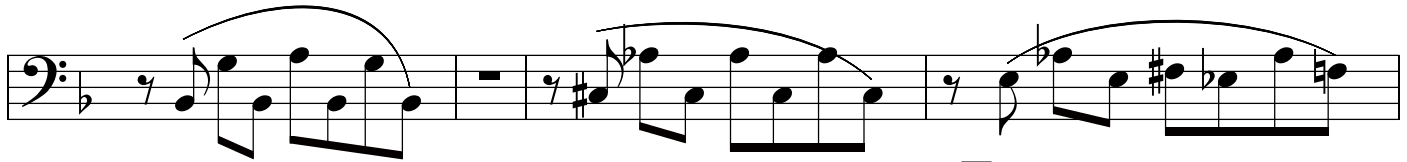
Bassoon 

2 Andante con moto

mf 

3 a tempo

p 



4 Piu mosso

5



5 a tempo

mf 

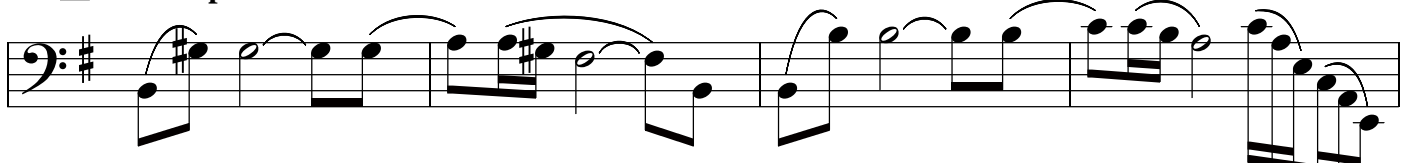
Piu mosso

mf 

rit.

f

6 a tempo



7 Con moto

10

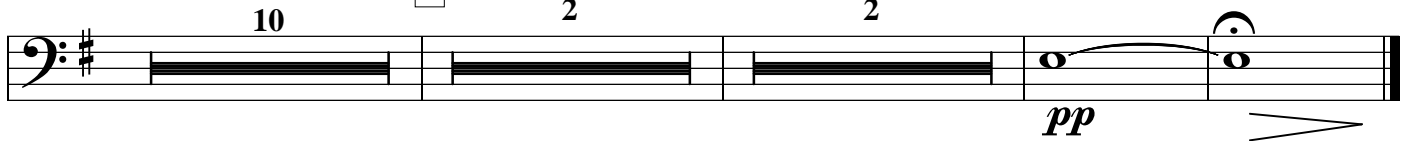
8

rubato

2

2

3



pp

Princess Leia

John Williams
Arrangement by Gibson corp.

Andante con moto

Bells

mf

1 Andante 9 *rit.* 2 Andante con moto 3 *rit.*

3 a tempo 9 4 Piu mosso 5 5 a tempo Piu mosso 5 *rit.*

6 a tempo 3 7 Con moto 10 8 4

Princess Leia

John Williams
Arrangement by Gibson corp.

Claninet 1

Andante con moto 4 1 Andante *pp*

2 Andante con moto *p* rit. 3 a tempo *mp*

3 4 Piu mosso 4 rit. 5 a tempo *mf*

Piu mosso

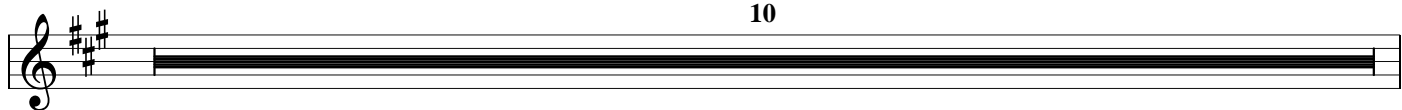
6 a tempo *f* 3

7 Con moto *mf* accelerando *cresc.*

8 Andante *f* \triangleright *p*

Rubato rit. *pp*

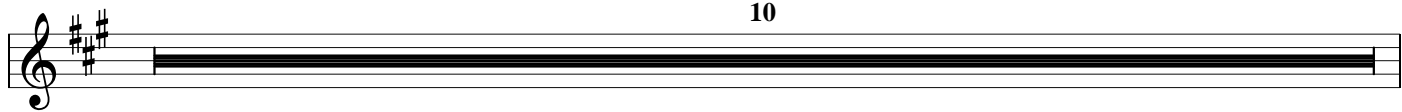
10



10



10



9



1



Princess Leia

John Williams
Arrangement by Gibson corp.

Clarinet 2

Andante con moto

1 Andante

pp

pp

rit.

2 Andante con moto

3 a tempo

p

p

4 Piu mosso

4

5 a tempo

mf

Piu mosso

6 a tempo

3

3

7 Con moto

accelerando

rit.

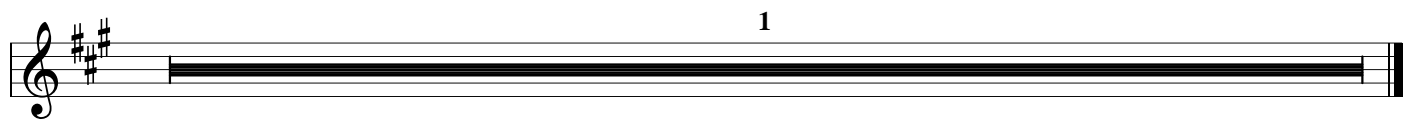
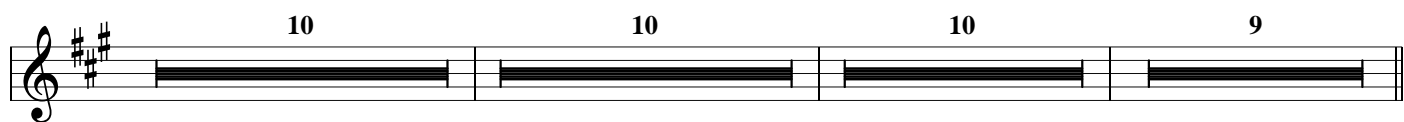
8 Andante

Rubato

rit.

p

pp



Princess Leia

John Williams
Arrangement by Gibson corp.

Clarinet 3

Andante con moto 4

1 Andante 8 rit.

2 Andante con moto rit.

a tempo *pp* *p*

4 Piu mosso 4 rit. *mf*

5 a tempo

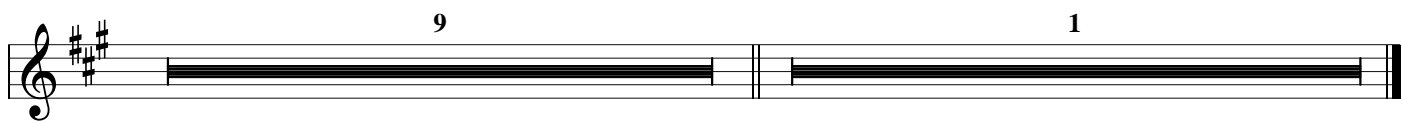
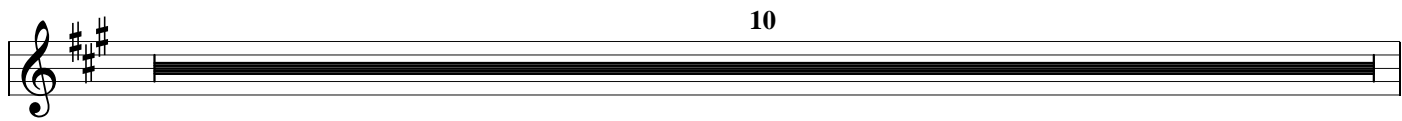
Piu mosso

rit. 6 a tempo

7 Con moto *accelerando*

8 Andante Rubato rit. *pp*

Detailed description of the musical score: The score is for Clarinet 3 and is written in treble clef with a key signature of three sharps (F#, C#, G#). It begins with a 4-measure rest, followed by a 4-measure rest. Measure 1 is marked '1 Andante' with a dynamic of *pp*. Measure 2 is marked '2 Andante con moto' with a dynamic of *p*. Measure 3 is marked '4 Piu mosso' with a dynamic of *mf*. Measure 4 is marked '5 a tempo'. Measure 5 is marked '6 a tempo'. Measure 6 is marked '7 Con moto' with an *accelerando* marking. Measure 7 is marked '8 Andante' with a dynamic of *pp*. Measure 8 is marked 'Rubato' with a dynamic of *pp*. The score includes various musical notations such as rests, notes, slurs, and articulation marks.



Princess Leia

John Williams
Arrangement by Gibson corp.

Cornet 1

Andante con moto 4

1 Andante 10

2 Andante con moto 3

3 a tempo 9

4 Piu mosso 4

5 a tempo

6 a tempo

7 Con moto 6

8 Andante

mf

pp

rit.

Piu mosso

Rubato

Princess Leia

John Williams
Arrangement by Gibson corp.

Cornet 2

Andante con moto 4

1 Andante 10

2 Andante con moto 3

3 a tempo 9

4 Piu mosso 4

5 a tempo

6 a tempo

7 Con moto 6

8 5 1

rit.

mf

rit.

Piu mosso

rit.

mf

Princess Leia

John Williams
Arrangement by Gibson corp.

Andante con moto

Flute 1 *mp*

Andante

1 *pp*

2 *rit.* Andante con moto *rit.* Solo *mf*

3 a tempo

The musical score for Flute 1 consists of several staves. The first staff is labeled 'Flute 1' and 'mp'. It begins with a 4/4 time signature and a key signature of one flat. The tempo is 'Andante con moto'. The music features a melodic line with various intervals and a fermata. The second staff is labeled 'Andante' and 'pp', with a first ending bracketed as '1'. The third and fourth staves continue the melodic line. The fifth staff has a 'rit.' marking, followed by a double bar line and a second ending bracketed as '2'. After the double bar line, the tempo returns to 'Andante con moto' and the dynamics are 'rit.' and 'Solo' with 'mf'. The sixth staff is labeled 'a tempo' and '3'. The seventh and eighth staves continue the piece, ending with a fermata.

4 **Piu mosso**

mf

5 **a tempo**

rit. *mf* **Piu mosso**

6 **a tempo**

rit. *f*

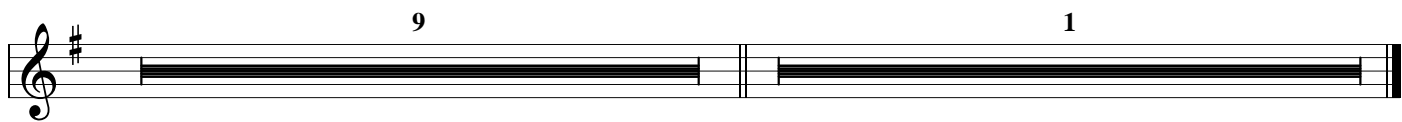
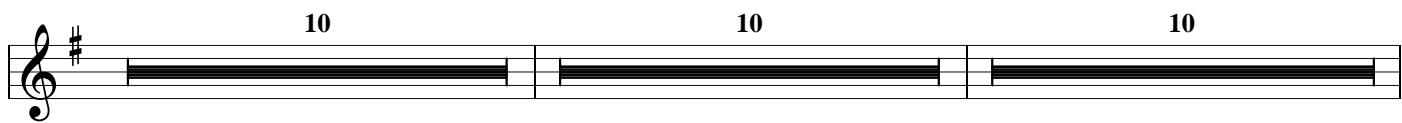
7 **Con moto**

accelerando

8 **Andante**

Solo *mf*

Rubato **Piccolo** *rit.* *pp*



Princess Leia

John Williams
Arrangement by Gibson corp.

Flute 2

Andante con moto 4

1 Andante *pp*

2 Andante con moto 3 *rit.*

3 a tempo 7

4 Piu mosso 4 *f*

5 a tempo *mf*

6 a tempo *rit.* *f*

7 Con moto *mf*

8 Andante Rubato *pp*

The musical score for Flute 2 is written in 4/4 time. It begins with a 4-measure rest, followed by a melodic line starting on G4. The first section (measures 1-3) is marked 'Andante con moto' and 'Andante' with a dynamic of 'pp'. The second section (measures 4-7) is marked 'Andante con moto' and 'a tempo' with a dynamic of 'f'. The third section (measures 8-11) is marked 'Piu mosso' and 'a tempo' with a dynamic of 'mf'. The fourth section (measures 12-15) is marked 'Con moto' and 'a tempo' with a dynamic of 'f'. The fifth section (measures 16-19) is marked 'accelerando' and 'rit.' with a dynamic of 'mf'. The final section (measures 20-23) is marked 'Andante' and 'Rubato' with a dynamic of 'pp'. The score includes various musical notations such as slurs, ties, and articulation marks.

Princess Leia

John Williams
Arrangement by Gibson corp.

Fr. Horn 1

Andante con moto 4

Solo 1 **Andante**

mp

rit. **2** **Andante con moto** *rit.*

3 **a tempo** *p* *mf* *mp*

4 **Piu mosso** *rit.*

5 **a tempo** *f* **Piu mosso**

6 **a tempo** *rit.* *f*

7 **Con moto** *mf* *accelerando* *f*

8 *rit.* **Rubato** 2 2 *pp*

Princess Leia

John Williams
Arrangement by Gibson corp.

Fr.Horn 2

Andante con moto 4 1 Andante 10 2 Andante con moto 2

3 a tempo 10 4 Piu mosso

mp

rit.

5 a tempo Pui mosso

mf

rit.

6 a tempo

f

7 Con moto

accelerando

rit.

8 6

Princess Leia

John Williams
Arrangement by Gibson corp.

Fr.Horn 3

Andante con moto 4 1 Andante 10 2 Andante con moto 2

3 a tempo 10 4 Piu mosso

5 a tempo Pui mosso

6 a tempo

7 Con moto

8 6

mf

f

mf

accelerando

rit.

rit.

Princess Leia

John Williams
Arrangement by Gibson corp.

Fr.Horn 4

Andante con moto 4 1 Andante 10 2 Andante con moto 2

3 a tempo 10 4 Piu mosso

5 a tempo Pui mosso

6 a tempo 4 7 Con moto

accelerando rit.

8 6

Princess Leia

John Williams
Arrangement by Gibson corp.

Andante con moto

Oboe

2

1 Andante Muta in corno inglese rit. mf 2 Andante con moto

9

3 a tempo 7 Muta in oboe f

4 Piu mosso 5 a tempo 4 Pui mosso

6 a tempo

7 Con moto 2 3 mf

8 Andante Rubato mp

rit. rit. pp

Princess Leia

John Williams
Arrangement by Gibson corp.

Tenor 1

Andante con moto

1 Andante
9

pp

rit. **2 Andante con moto** *rit.*

3 a tempo 7 **4 Piu mosso**

mf

5 a tempo *mf* **Piu mosso**

6 a tempo *rit.* *f*

7 Con moto *accelerando*

8 Andante *rit.*

Rubato 2 *pp*

Princess Leia

John Williams
Arrangement by Gibson corp.

Andante con moto

4

1 **Andante** 10

2 **Andante con moto** 3

Tenor 2

3 **a tempo** 9

4 5

5 **a tempo** 4

Piu mosso

5 *rit.* 6 **a tempo**

f

7 *rit.* 8 5 1

f

Princess Leia

John Williams
Arrangement by Gibson corp.

Andante con moto **Andante** **Andante con moto**

4 1 10 2 3

Timpani 

 3 9 4 **Piu mosso** 5 **a tempo**

 5 6 **a tempo** **Tacet**

mp  *f*

Princess Leia

John Williams
Arrangement by Gibson corp.

Andante con moto **Andante**

Trombon 1 5 1 10

2 **Andante con moto** **3** 9

4 **Piu mosso** **5** **a tempo** 4 4 *mp* *rit.*

6 **a tempo** *mp*

7 **Con moto** 7 8 6 *f* *ff*

Princess Leia

John Williams
Arrangement by Gibson corp.

Andante con moto 1 Andante

5 10

Trombon 2

2 Andante con moto 4 *rit.* 3 a tempo 9

4 Piu mosso 5 5 a tempo 4 Piu mosso 4 *mp* *rit.*

6 a tempo

7 Con moto 7 8 6

f *ff*

Princess Leia

John Williams
Arrangement by Gibson corp.

Andante con moto 5 1 **Andante** 10

Trombon 3

2 **Andante con moto** 4 3 9

4 **Piu mosso** 5 5 **a tempo** 4 **Piu mosso** 4 *rit.*

mp

6 **a tempo**

mp

7 7 8 6

f ff

Princess Leia

John Williams
Arrangement by Gibson corp.

Trumpet 1-2

Andante con moto 5 1 Andante 10 2 Andante con moto 4

3 10 4 Piu mosso 5 5 a tempo 4

Piu mosso 5 rit. f 6 a tempo

7 7 rit.

8 6