

A Fancie

Partita.Ru

Alto Trombone

[♩ = c.80]

William Byrd (1543-1623),
from My Lady Nevells Booke,
arr. Dave Taylor

4

mp

4

7

9

12

15

18

20

24 [♩ = c.96]

f

27

30

32

35 [♩ = c.80]

mp

2

Alto Trombone

38

Measures 38-41: A series of half and quarter notes with some rests, starting on a treble clef with a key signature of one sharp (F#).

42

Measures 42-44: A sequence of eighth notes followed by a more complex eighth-note pattern.

45

Measures 45-48: A continuous eighth-note run followed by quarter and half notes.

49

Measures 49-50: A fast eighth-note run.

51

Measures 51-55: A series of eighth notes, including some with accents, followed by quarter notes.

56

Measures 56-59: A sequence of quarter notes, some with accents.

60

Measures 60-62: A sequence of quarter notes with various accents.

63

Measures 63-65: A fast eighth-note run.

[poco rit.]

66

Measures 66-69: A sequence of quarter notes transitioning into eighth notes, marked [poco rit.]

70

[Allarg. ($\text{♩} = \text{c.}66$) e rit. al fine]

[molto rit.]

Measure 70: A final sequence of eighth notes, marked [Allarg. ($\text{♩} = \text{c.}66$) e rit. al fine] and [molto rit.]

f

ff

A Fancie

Partita.Ru

2nd Trombone

William Byrd (1543-1623),
from My Lady Nevells Booke,
arr. Dave Taylor

[♩ = c.80]

mp

4

6

8

10

12

15

19

21

23

[♩ = c.96]

f

25

2

2nd Trombone

27



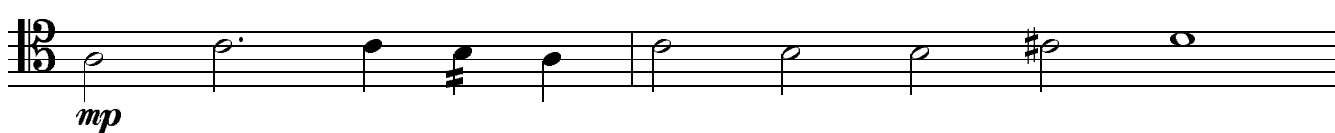
30



32



34

36 [$\text{♩} = \text{c.80}$]

38



40



42



44



47



50



2nd Trombone

53



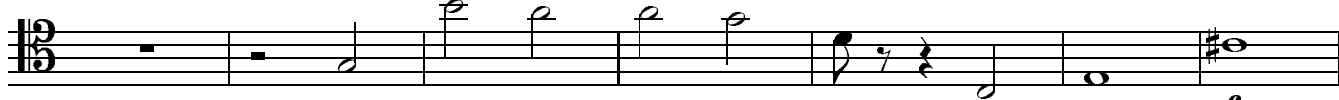
57



60



64



[poco rit.]

[Allarg. (♩ = c.t.)

f

71



[molto rit.]

ff

A Fancie

Partita.Ru

3rd Trombone

William Byrd (1543-1623),
from My Lady Nevells Booke,
arr. Dave Taylor

[♩ = c.80]

mp

4

6

8

10

13

16

18

21

24 [♩ = c.96]

f

27

30

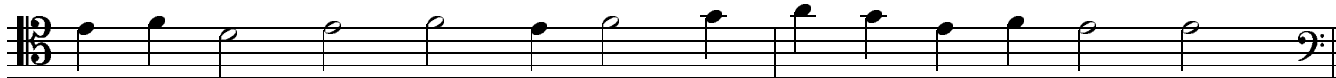
2

3rd Trombone

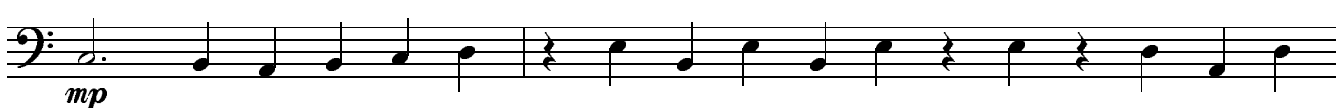
32



34



36 [♩ = c.80]



38



40



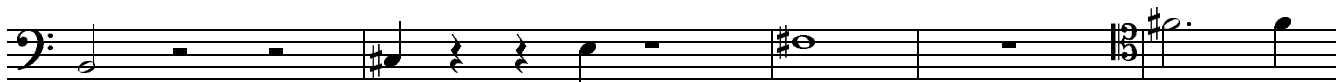
43



46



50



55



59



62



69

[Allarg. (♩ = c.66) e rit. al fine]

[molto rit.]



A Fancie

Bass Trombone

William Byrd (1543-1623),
from My Lady Nevells Booke,
arr. Dave Taylor

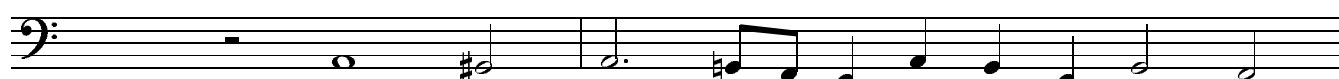
[♩ = c.80]



measures 1-4: Bass clef, C major, 4/4 time. Measure 1: whole rest. Measure 2: whole rest. Measure 3: whole note E4, quarter note F#4, quarter note G4. Measure 4: quarter note A4, quarter note B4, quarter note C5, quarter note B4, quarter note A4, quarter note G4, quarter note F#4, quarter note E4.


mp

5



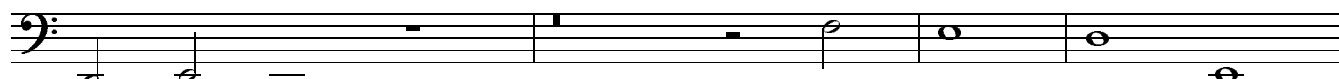
measures 5-6: Measure 5: whole note E4, whole note D4. Measure 6: quarter note C5, quarter note B4, quarter note A4, quarter note G4, quarter note F#4, quarter note E4, quarter note D4, quarter note C4.

7



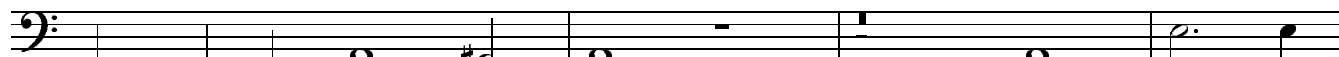
measures 7-8: Measure 7: whole note E4, whole note D4, whole note C4. Measure 8: quarter note B3, quarter note A3, quarter note G3, quarter note F#3, quarter note E3, quarter note D3, quarter note C3, quarter note B2.

10



measures 9-10: Measure 9: whole note B2, whole note A2, whole note G2. Measure 10: whole note F#2, whole note E2, whole note D2.

14



measures 11-13: Measure 11: quarter note G3, quarter note F#3, quarter note E3, quarter note D3, quarter note C3, quarter note B2, quarter note A2, quarter note G2. Measure 12: whole note E2, whole note D2. Measure 13: whole note C2, whole note B1.


18



measures 14-17: Measure 14: quarter note B1, quarter note A1, quarter note G1, quarter note F#1, quarter note E1, quarter note D1, quarter note C1, quarter note B0. Measure 15: quarter note A0, quarter note G0, quarter note F#0, quarter note E0, quarter note D0, quarter note C0, quarter note B-1, quarter note A-1. Measure 16: quarter note G-1, quarter note F#-1, quarter note E-1, quarter note D-1, quarter note C-1, quarter note B-2, quarter note A-2. Measure 17: quarter note G-2, quarter note F#-2, quarter note E-2, quarter note D-2, quarter note C-2, quarter note B-3, quarter note A-3, quarter note G-3.

21


[♩ = c.96]



measures 18-20: Measure 18: quarter note G-3, quarter note F#-3, quarter note E-3, quarter note D-3, quarter note C-3, quarter note B-3, quarter note A-3, quarter note G-3. Measure 19: quarter note F#-3, quarter note E-3, quarter note D-3, quarter note C-3, quarter note B-3, quarter note A-3, quarter note G-3, quarter note F#-3. Measure 20: quarter note E-3, quarter note D-3, quarter note C-3, quarter note B-3, quarter note A-3, quarter note G-3, quarter note F#-3, quarter note E-3.


f

25



measures 21-24: Measure 21: quarter note D-3, quarter note C-3, quarter note B-3, quarter note A-3, quarter note G-3, quarter note F#-3, quarter note E-3, quarter note D-3. Measure 22: quarter note C-3, quarter note B-3, quarter note A-3, quarter note G-3, quarter note F#-3, quarter note E-3, quarter note D-3, quarter note C-3. Measure 23: quarter note B-3, quarter note A-3, quarter note G-3, quarter note F#-3, quarter note E-3, quarter note D-3, quarter note C-3, quarter note B-3. Measure 24: quarter note A-3, quarter note G-3, quarter note F#-3, quarter note E-3, quarter note D-3, quarter note C-3, quarter note B-3, quarter note A-3.

27



measures 25-26: Measure 25: quarter note G-3, quarter note F#-3, quarter note E-3, quarter note D-3, quarter note C-3, quarter note B-3, quarter note A-3, quarter note G-3. Measure 26: quarter note F#-3, quarter note E-3, quarter note D-3, quarter note C-3, quarter note B-3, quarter note A-3, quarter note G-3, quarter note F#-3.

30



measures 27-29: Measure 27: quarter note E-3, quarter note D-3, quarter note C-3, quarter note B-3, quarter note A-3, quarter note G-3, quarter note F#-3, quarter note E-3. Measure 28: quarter note D-3, quarter note C-3, quarter note B-3, quarter note A-3, quarter note G-3, quarter note F#-3, quarter note E-3, quarter note D-3. Measure 29: quarter note C-3, quarter note B-3, quarter note A-3, quarter note G-3, quarter note F#-3, quarter note E-3, quarter note D-3, quarter note C-3.

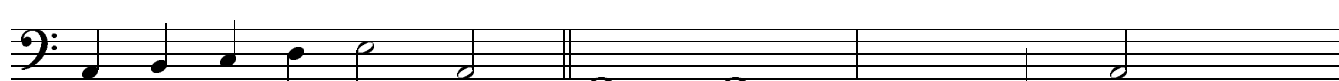
32



measures 30-31: Measure 30: quarter note B-3, quarter note A-3, quarter note G-3, quarter note F#-3, quarter note E-3, quarter note D-3, quarter note C-3, quarter note B-3. Measure 31: quarter note A-3, quarter note G-3, quarter note F#-3, quarter note E-3, quarter note D-3, quarter note C-3, quarter note B-3, quarter note A-3.

35

[♩ = c.80]



measures 32-34: Measure 32: quarter note G-3, quarter note F#-3, quarter note E-3, quarter note D-3, quarter note C-3, quarter note B-3, quarter note A-3, quarter note G-3. Measure 33: quarter note F#-3, quarter note E-3, quarter note D-3, quarter note C-3, quarter note B-3, quarter note A-3, quarter note G-3, quarter note F#-3. Measure 34: quarter note E-3, quarter note D-3, quarter note C-3, quarter note B-3, quarter note A-3, quarter note G-3, quarter note F#-3, quarter note E-3.

mp

2

Bass Trombone

38



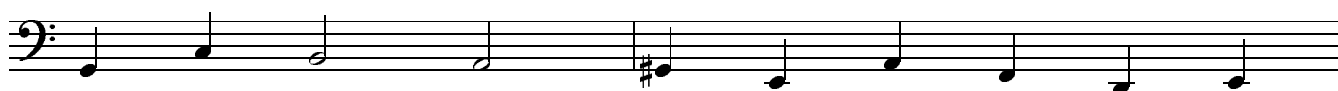
42



46



49



51



54



59



63



67



71

