

Prelude in G major

1st Trumpet in B \flat

J.S.Bach (1685-1750),

arr. Dave Taylor

[♩ = c.96]

f

3

6

9

3

15

2

p *cresc.*

20

23

f

25

p

28

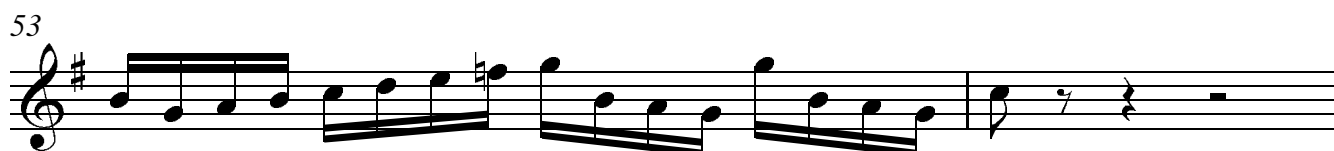
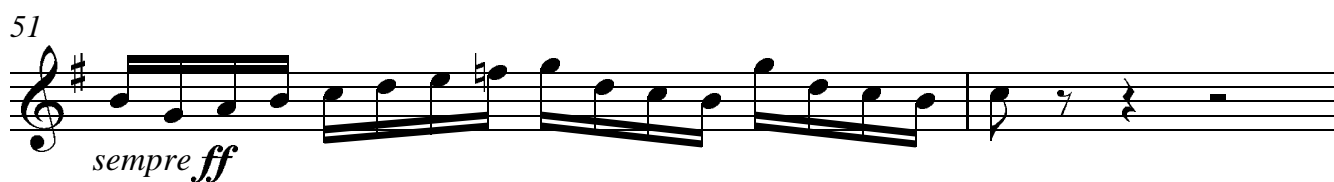
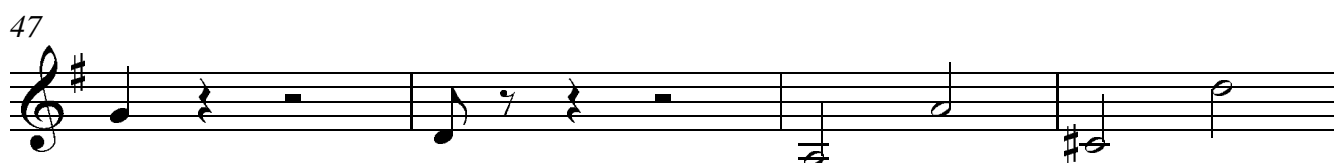
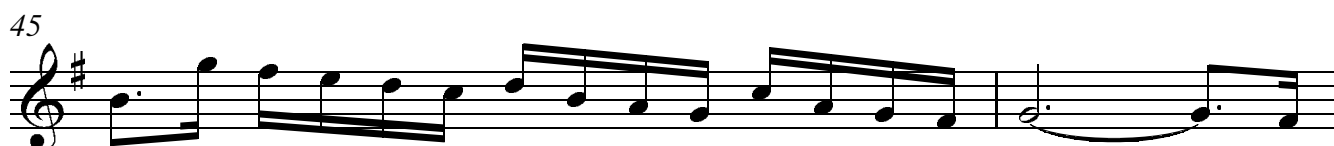
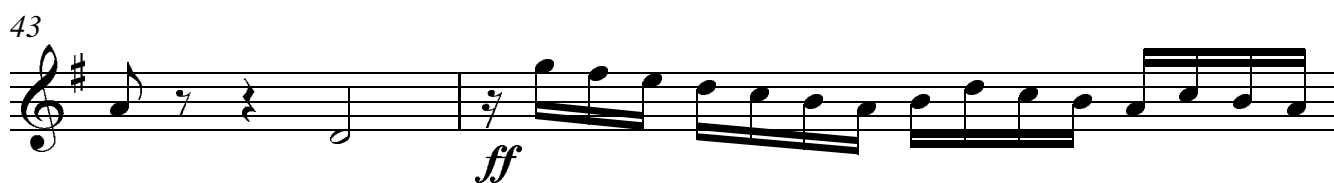
31

3

36

cresc. poco a poco

2

1st Trumpet in B \flat 

Prelude in G major

2nd Trumpet in B \flat

J.S.Bach (1685-1750),

arr. Dave Taylor

[$\text{♩} = \text{c.}96$]

4

f

8

3

13

p

17

cresc.

21

f

24

26

p

29

31

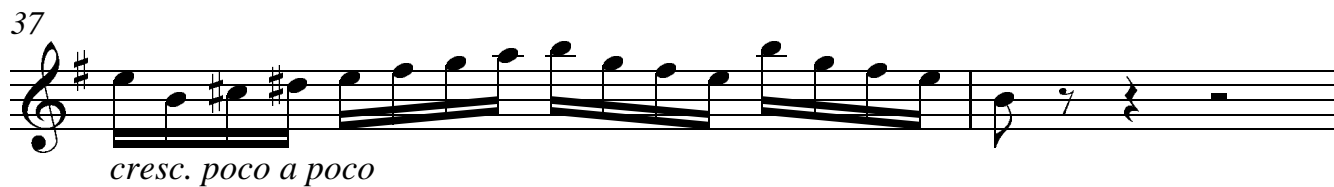
2

2nd Trumpet in B \flat

34



37



cresc. poco a poco

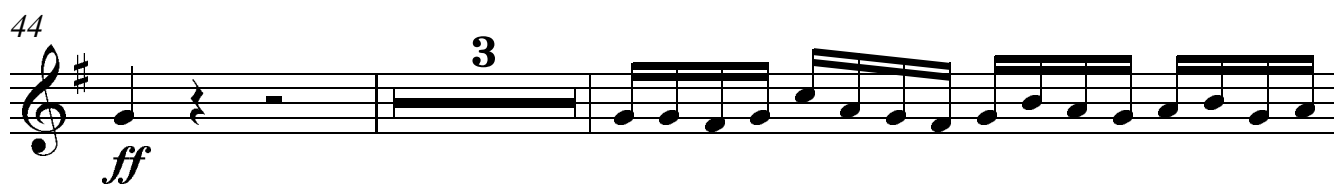
39



41



44



ff

49



52

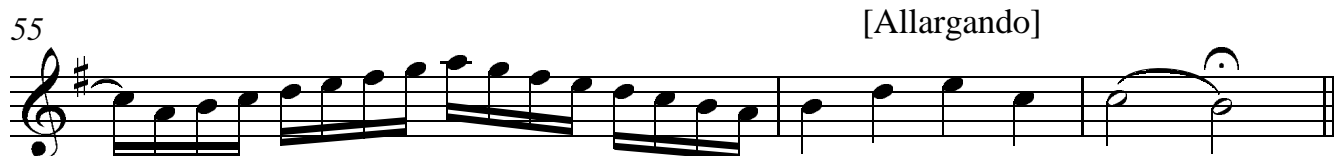


sempre ff

54



55



[Allargando]

Prelude in G major

Horn in F

J.S.Bach (1685-1750),
arr. Dave Taylor

[♩ = c.96]

5

9

12

16

22

28

34

40

45

47

52

f

cresc.

f

p

cresc. poco a poco

ff

sempre ff

[Allargando]

Prelude in G major

Trombone

J.S.Bach (1685-1750),
arr. Dave Taylor

[♩ = c.96]

2

f

7

3

2

13

p

19

cresc.

f

26

p

32

cresc. poco a poco

39

43

ff

47

50

[Allargando]

sempre ff

Prelude in G major

Tuba

J.S.Bach (1685-1750),
arr. Dave Taylor

[♩ = c.96]

Musical score for Tuba, Prelude in G major by J.S. Bach, arranged by Dave Taylor. The score is in bass clef, 4/4 time, and G major. It consists of 11 staves of music with various dynamics and performance markings.

Dynamics and markings include: *f*, *tr*, *mp*, *cresc.*, *f*, *p*, *ff*, *sempre ff*, and *[Allargando]*.

Measure numbers are indicated at the beginning of each staff: 7, 11, 15, 18, 20, 22, 29, 35, 42, 47, and 52.

Notes marked with an asterisk (*) are indicated in measures 18, 20, and 22.

N.B. Notes marked * may be missed for breathing purposes