

1st Trumpet in B \flat

Asturias

Op.47 No.5

Isaac Albeniz
arr. Richard A. Hull

$\text{♩} = 132$
con sord

pp

5

3

pp

12

A

3

cresc.

19

3

25

ff

29

B

fff

35

40

45

dim. sempre

49

C

senza sord

3

pp

1st Trumpet in B \flat

56 

61 **D** *Cantando largamente ma dolce* $\text{♩} = 112$
pp *mf* *poco cresc.*

71 *sf dim.* *sf dim.* *rit. molto*

79 **E** *A tempo* *mp* *mf* *rit. molto* *A tempo*

88 *rit.* *dim.* *molto morendo*

94 **F** *A tempo* *mf* *sf*

101 *cresc.* *rit.* *A tempo* *mf*

108 *rit.* $\text{♩} = 112$ *mp*

114 *rall.* **G** *pp* *mf* *molto rall. e morendo* *D.C. al Coda*

123 **CODA** *Lento* *pp* *sf* *p*

133 *Quasi Andante* *con sord.* *rit.* *p* *ppp*



2nd Trumpet in B \flat

Allegro ma non troppo

 $\text{♩} = 132$

Asturias

Op.47 No.5

Isaac Albeniz

arr. Richard A. Hull

4 con sord *pp*

8 *pp*

15 **A** *cresc.*

22

27 *ff*

32 **B** *fff*

38

42

49 **C** senza sord

54 *pp*

Detailed description of the musical score: The score is written for a 2nd Trumpet in B-flat. It begins with a tempo marking of 'Allegro ma non troppo' and a metronome marking of 132 quarter notes per minute. The piece is in 3/4 time. The first measure is marked with a '4' above the staff, indicating a four-measure rest. The initial dynamic is 'pp' (pianissimo) and the instruction 'con sord' (with mutes) is present. The score is divided into sections: Section A (measures 15-21), Section B (measures 32-37), and Section C (measures 49-53). Dynamics range from 'pp' to 'fff' (fortississimo). The piece concludes with a '3' above the staff and a 'pp' dynamic. The arrangement is by Richard A. Hull.

2nd Trumpet in B \flat

63 **D** *Cantando largamente ma dolce* $\text{♩} = 112$ *rit. molto*

mf *mf*

77 **E** *A tempo* *rit. molto*

mp *mf*

85 *A tempo* *rit.*

mf

94

95 **F** *A tempo*

mf *sf* *cresc.*

104 *rit.* *A tempo* *rit.*

mf

112 *A tempo* *rall.*

mp

115 **G** *molto rall. e morendo* *D.C. al Coda*

mf

123 **CODA** *Lento*

pp *sf* *sf* *p*

133 *Quasi Andante*
con sord.

p

2nd Trumpet in B♭

3

135

rit.

ppp

The musical score for the 2nd Trumpet in B♭ part, measures 135-138, is as follows:

- Measure 135: Treble clef, G4 quarter note, A4 quarter note, B4 quarter note, C5 quarter note, B4 quarter note, A4 quarter note, G4 quarter note.
- Measure 136: G4 quarter note, A4 quarter note, B4 quarter note, C5 quarter note, B4 quarter note, A4 quarter note, G4 quarter note.
- Measure 137: G4 quarter note, A4 quarter note, B4 quarter note, C5 quarter note, B4 quarter note, A4 quarter note, G4 quarter note.
- Measure 138: G4 quarter note, A4 quarter note, B4 quarter note, C5 quarter note, B4 quarter note, A4 quarter note, G4 quarter note.

The score includes a *rit.* (ritardando) marking above the first two measures and a *ppp* (pianissimo) dynamic marking below the first measure of the final measure.

Horn in F

Asturias

Op.47 No.5

Allegro ma non troppo

♩ = 132

Isaac Albeniz
arr. Richard A. Hull

p

7

13 **A** *cresc.*

19 *cresc.*

25 *ff* *ff*

31 **B** *fff*

37

43 *ff dim. sempre*

49 **C**

53 *pp*

Horn in F

56

59

Cantando largamente ma dolce

63 **D** $\text{♩} = 112$

76 *rit. molto* **E** *A tempo*

87 *A tempo*

95 **F** *A tempo*

106 *A tempo*

112 *A tempo*

115 **G**

123 **CODA** *Lento*

132 *Quasi Andante*

Trombone

Asturias

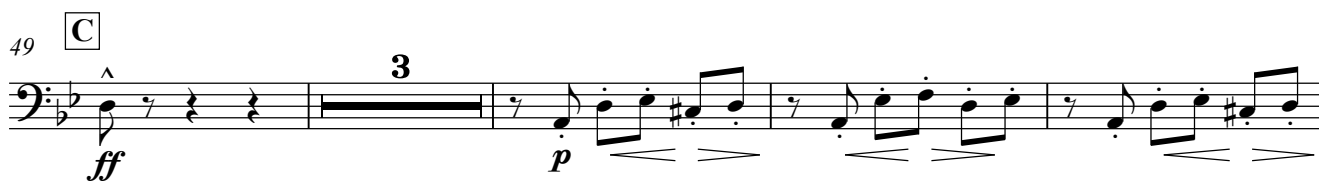
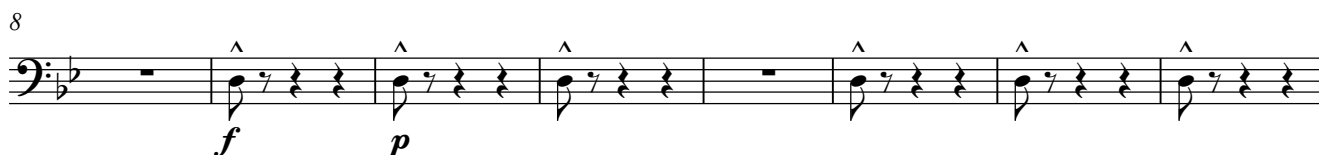
Op.47 No.5

Isaac Albeniz

arr. Richard A. Hull

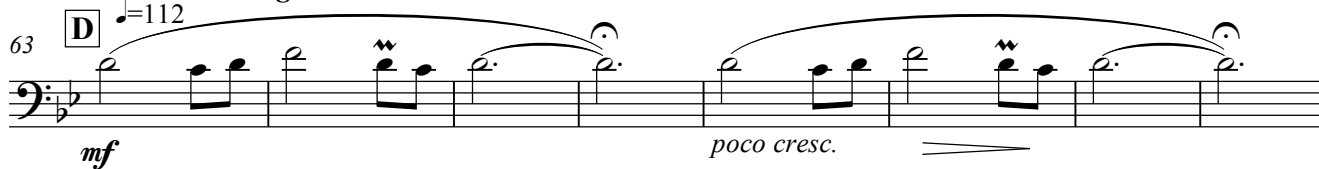
Allegro ma non troppo

♩ = 132



Cantando largamente ma dolce

♩ = 112



Trombone

71 *sf dim.* *sf dim.* **rit. molto**

79 **E** **A tempo** *mp* *mf* **rit. molto**

87 **A tempo** **rit.**

94

95 **F** **A tempo** *mf* *sf*

102 *cresc.* **rit.** **A tempo** *mf* **rit.**

112 **A tempo** **rall.** **G** *mf* *pp* *mf*

119 **molto rall. e morendo** **D.C. al Coda**

CODA 123 **Lento** *pp* *sf* **2**

133 **Quasi Andante** **rit.** *mp* *ppp*

Tuba

Asturias

Op.47 No.5

Allegro ma non troppo

♩ = 132

A

Isaac Albeniz
arr. Richard A. Hull

8

7

18

7

25

33

B

40

47

2

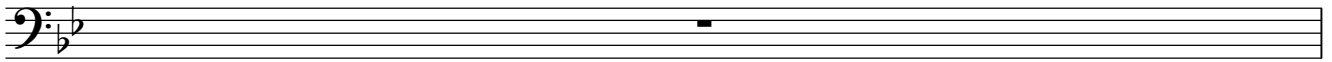
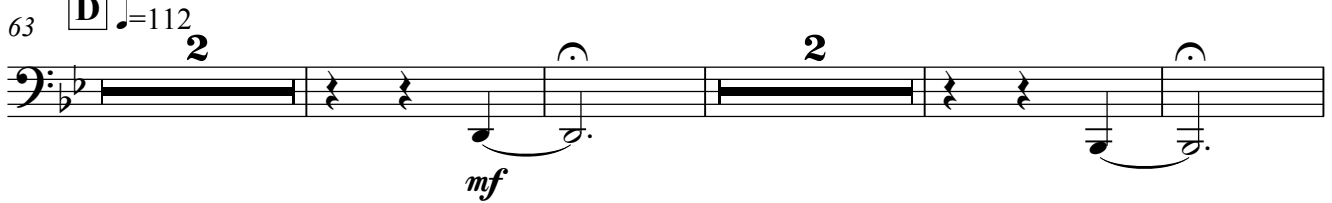
49

C

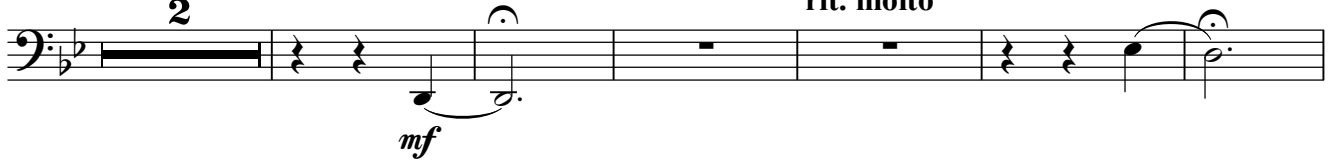
3

57

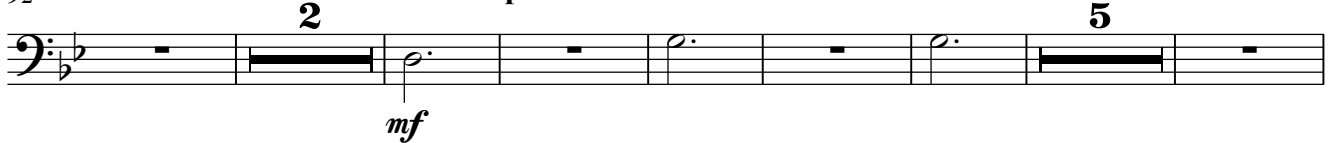
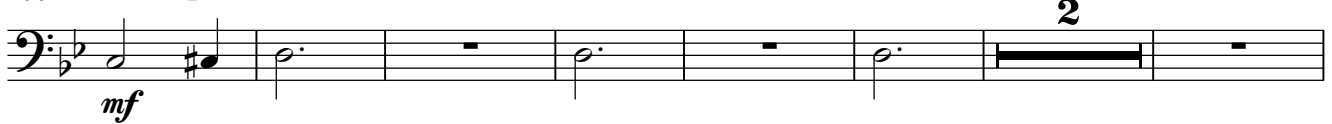
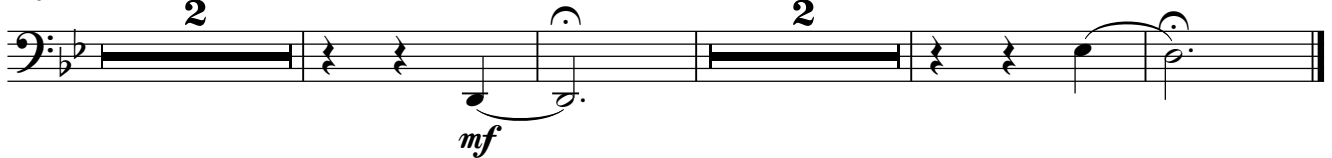
62

63 **D** *Cantando largamente ma dolce*

71

79 **E** *A tempo* *rit. molto*

92

106 *A tempo*115 **G**

123 CODA



131

