

# See, See The Shepherds' Queen

1622

Trumpet 1 in Bb

Thomas Tomkins

Arr. by D. Wampler

*Lively*  $\text{♩} = 108$

*f*

6

11

*p*

17

22

*f*

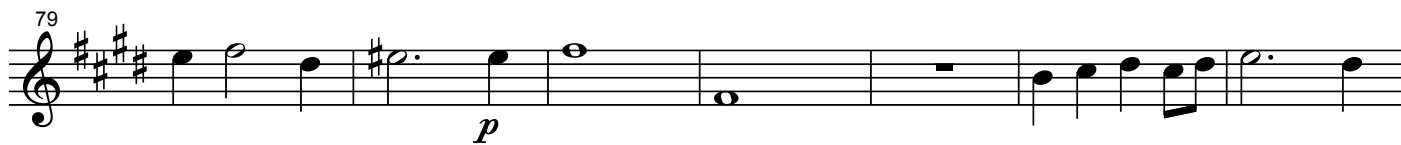
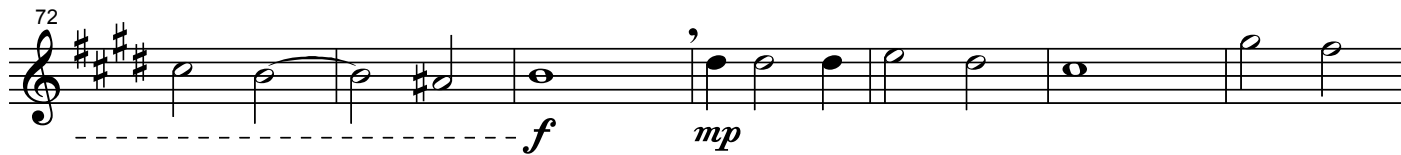
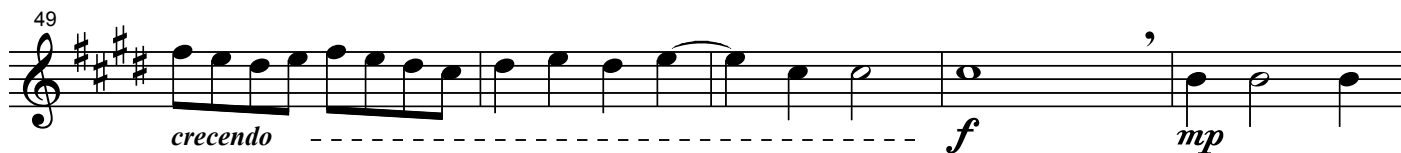
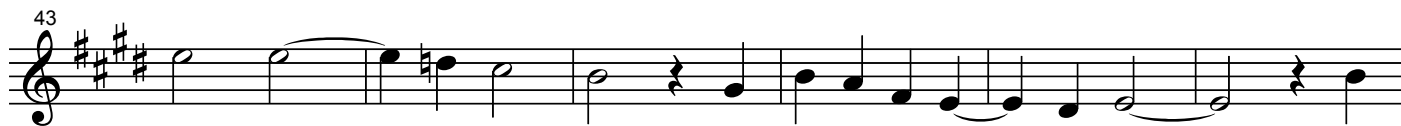
27

*p*

33

38

*mp*



# See, See The Shepherds' Queen

1622

Trumpet 2 in Bb

Thomas Tomkins

Arr. by D. Wampler

*Lively*  $\text{♩} = 108$ 

*f*

6

11

*p*

16

21

*f*

26

*p*

31

36

*mp*

42 *crescendo* -----

48 *f* *mp*

55 *p*

61 *crescendo* -----

67

73 *f* *mp*

79 *p*

85 *crescendo* -----

91 *f* *rit.*

# See, See The Shepherds' Queen

1622

Horn in F

Thomas Tomkins

Arr. by D. Wampler

*Lively*  $\text{♩} = 108$ 

*f*

6

11 *p*

17

22 *f*

27 *p*

32

37 *mp*

42 *crescendo* - - -

47

52 *f* *mp*

59 *p*

66 *crescendo* - - -

72 *f* *mp*

78 *p*

85 *crescendo* - - -

91 *f* *rit.*

# See, See The Shepherds' Queen

1622

Trombone

Thomas Tomkins

Arr. by D. Wampler

*Lively*  $\text{♩} = 108$ 

*f*

6

12

*p*

18

24

*f*

29

*p*

34

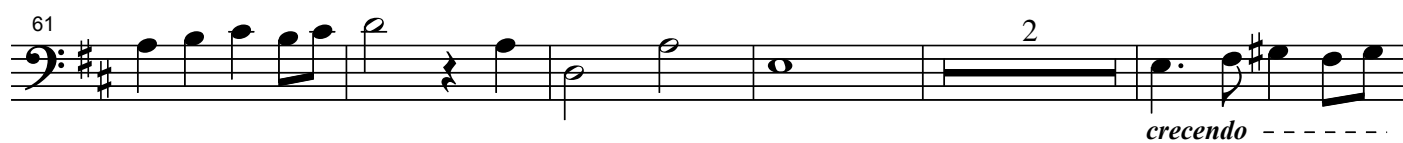
*mp*

39

44  *crescendo* - - - - -

50  *f* *mp*

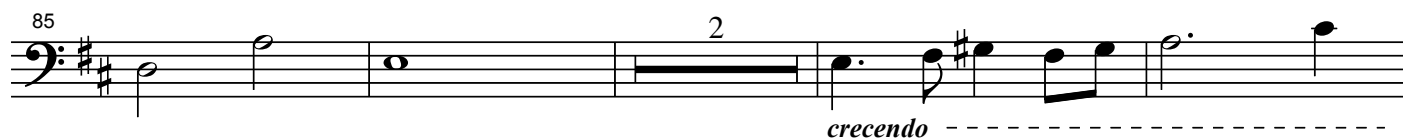
55  *p*

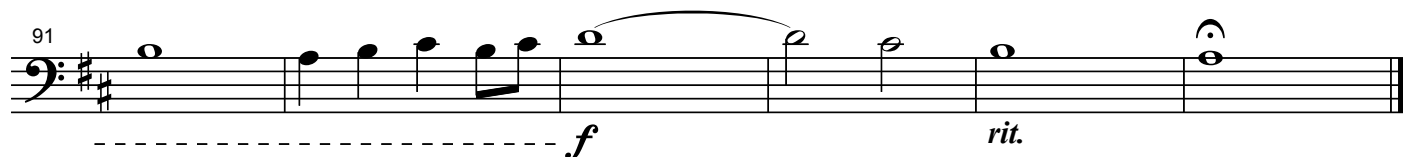
61  *crescendo* - - - - -

68 

73  *f* *mp*

79  *p*

85  *crescendo* - - - - -

91  *f* *rit.*



# See, See The Shepherds' Queen

1622

Tuba

Thomas Tomkins

Arr. by D. Wampler

*Lively*  $\text{♩} = 108$ 

*f*

6

12 *p*

18

24 *f*

29 *p*

34 *mp*

39

44



49



*crescendo* ----- *f* *mp*

54



*p*

60

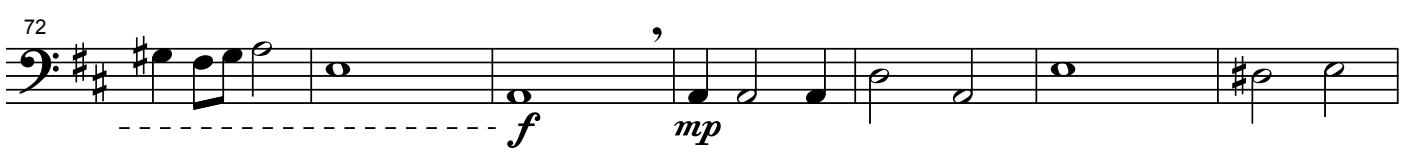


66



*crescendo* -----

72



*f* *mp*

79



*p*

85



*crescendo* -----

91



*f* *rit.*