

Trompet in B \flat 1

Olas

Roberto Di Marino

arr. Gh. Brănicî

$\text{♩} = 112 - 120$

4

A

p

B 16 C

p

mf

D SOLO

f

6

6

3

E

p poco a poco cresc.

ff

F 3 SOLO con sord.

G

3

3

Trompet in B \flat 2*Olas*

Roberto Di Marino

arr. Gh. Brănici

$\text{♩} = 112 - 120$

A **4** **16** **B** *mf*

C **7** *mf*

D *p poco cresc.* *mf poco dim.*

E *p poco a poco cresc.* *ff*

F *pp subito*

2

Musical score for Partita, page 2. The score consists of ten staves of music in treble clef. It features various dynamics (*p*, *fp*, *mf*, *ff*, *sfz*), articulations (accents, slurs), and performance markings (H...L, M, N, O, Q). The music includes sixteenth-note passages and a final sforzando accent.

Dynamics and markings: *p*, *fp*, *mf*, *ff*, *sfz*, *p poco cresc.*, *mf poco dim.*, *p poco a poco cresc.*

Performance markings: H...L, M, N, O, Q

Rehearsal marks: 16, 16, 7

Alto Sax

Olas

Roberto Di Marino
arr. Gh. Brăniçi

$\text{♩} = 112 - 120$

4

A

8

p

B SOLO

3

3

3

3

3

C

p

8

D

p poco cresc.

mf poco dim.

E

p poco a poco cresc.

ff

7

F

pp subito

G

p

fp

p

fp

p

fp

p

fp

2

H...L

16

M

N

O

P SOLO

8

Q

Trombone 1

Olas

Roberto Di Marino

arr. Gh. Brănici

$\text{♩} = 112 - 120$

A

4

Section A, measures 1-4. Bass clef, 4/4 time. Dynamics: *p*

B 2x

Section B, measures 5-8. Bass clef, 4/4 time. Dynamics: *mf*

C

Section C, measures 9-12. Bass clef, 4/4 time. Dynamics: *p*

D

Section D, measures 13-16. Bass clef, 4/4 time. Dynamics: *mf*, *p poco cresc.*

Section D continuation, measures 17-20. Bass clef, 4/4 time. Dynamics: *mf poco dim.*

E

Section E, measures 21-24. Bass clef, 4/4 time. Dynamics: *mf poco a poco cresc.*

Section E continuation, measures 25-28. Bass clef, 4/4 time. Dynamics: *ff*

Section E continuation, measures 29-32. Bass clef, 4/4 time. Dynamics: *ff*

F

Section F, measures 33-36. Bass clef, 4/4 time. Dynamics: *pp subito*

G

Section G, measures 37-40. Bass clef, 4/4 time. Dynamics: *p*, *fp*

Section G continuation, measures 41-44. Bass clef, 4/4 time. Dynamics: *p*, *fp*

H...L

8

SOLO

First staff of music, bass clef, starting with a whole note rest.

Second staff of music, bass clef, starting with a whole note rest.

M

p

Third staff of music, bass clef, starting with a whole note rest.

Fourth staff of music, bass clef, starting with a whole note rest.

p

Fifth staff of music, bass clef, starting with a whole note rest.

N

SOLO

8^{va}

Sixth staff of music, bass clef, starting with a whole note rest.

8^{va}

Seventh staff of music, bass clef, starting with a whole note rest.

O

8

mf

Eighth staff of music, bass clef, starting with a whole note rest.

Ninth staff of music, bass clef, starting with a whole note rest.

P

p poco cresc.

Tenth staff of music, bass clef, starting with a whole note rest.

Q

mf poco dim.

p poco a poco cresc.

Eleventh staff of music, bass clef, starting with a whole note rest.

ff

Twelfth staff of music, bass clef, starting with a whole note rest.

Thirteenth staff of music, bass clef, starting with a whole note rest.

sfz

Trombone 2

Olas

 $\text{♩} = 112 - 120$

Roberto Di Marino

arr. Gh. Brănici

A

p

B

mf

C

p

D

poco cresc.

E

mf poco dim. *p poco a poco cresc.*

F

mp subito

G

H...L SOLO

Drum Set

Olas

Roberto Di Marino

♩ = 112 - 120 (Variations of this basic rhythm are also acceptable)

A

B

C

D

E

F

G

H

p

mp

mf

p poco cresc.

mf poco dim.

p cresc. a poco a poco

ff

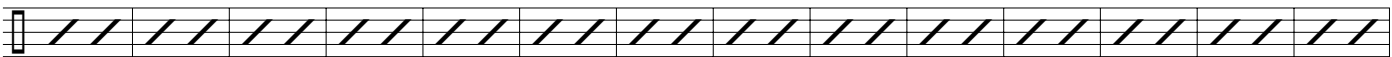
pp subito

mp

Play 3 times: 1st time - trombone solo,
2nd time - sax solo, 3rd time - trumpet solo

129

I

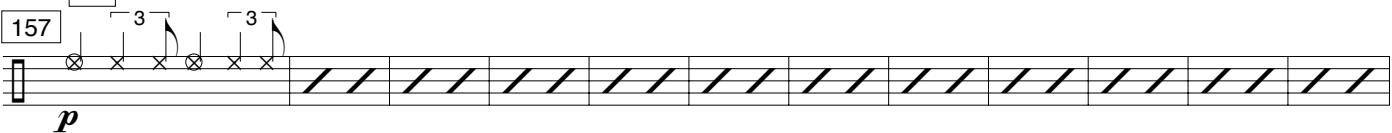


143



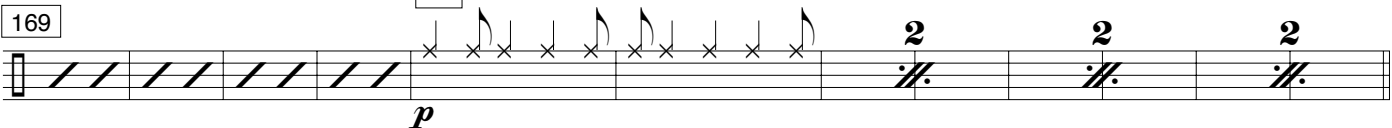
157

L

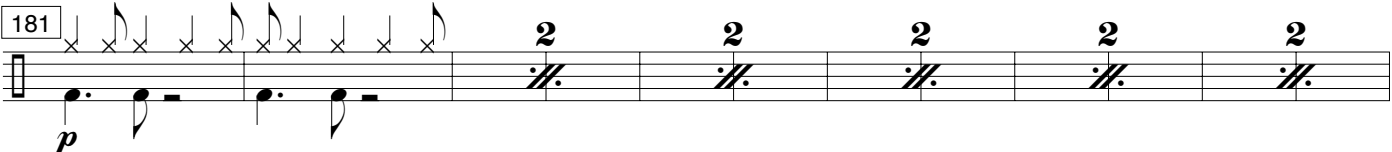


169

M

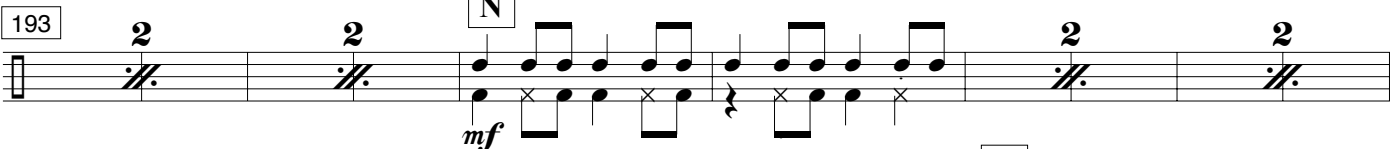


181



193

N



203

O



215



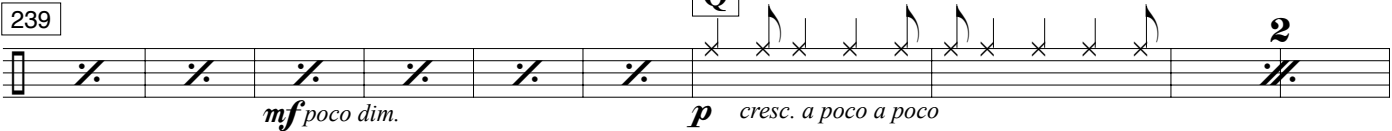
229

P

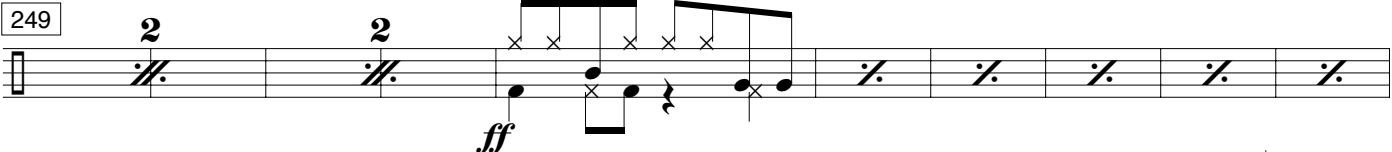


239

Q



249



259

