

Flute I

MALÁ VÁNOČNÍ HUDBA

Allegro moderato (q = 108)

f mf *leggiero*

9

Půjdem spolu do Betléma

16 ① (q = 92) p

23

Já bych rád k Betlému mf

30 ② (q = 106) mf *con swing* simile

35 Meno mosso mf *non swing*

39 f W ##

44 ③ Jingle Bells Allegretto (q = 100) p

53 ④ Tempo di valzer mf

62 ⑤ Allergamente (h = 100) < f sub. mf

68

Flute I

74

mf

80

f

87

mf

Chtíc aby spalAndante con moto

92

mf p

97

mf p

102

mp mf

112

f mf portamento

120

f

128

f

133

ff

Flute II

MALÁ VÁNOČNÍ HUDBA

Allegro moderato (q = 108)

f mf *leggiero*

9 rit. f

Půjdem spolu do Betléma

16 ① (q = 96) p

23 mf

Já bych rád k Betlému

30 ② (q = 106) mf *con swing* simile

35 *Meno mosso* mf *non swing*

39 f

Jingle Bells

44 ③ Allergamente (q = 100) p

53 ④ *Tempo di valzer* mf

62 ⑤ Allergamente (h = 100) f sub. mf

68

Flute II

74

mf

80

f

86

Chtíc aby spal
Andante con moto
92

mf p

101

mp mf

Adeste fideles
Grandioso
111

f mf portamento

118

124

f

131

135

ff

Clarinet I in Bb

MALÁ VÁNOČNÍ HUDBA

Allegro moderato (q = 108)

f *mf leggiero*

9 *rit.* f

Půjdem spolu do Betléma

16 ① (q = 96) p p

23 *mf*

Já bych rád k Betlému

30 ② (q = 106) ^ *mf con swing simile*

35 *Meno mosso* *mf non swing* f

41 *Jingle Bells* ③ *Allergamente (q = 100)* p

48

56 ④ *Tempo di valzer* *mf* < f

Allergamente (h = 100)

64 ⑤ *sub. mf*

71 ⑥ *mf*

Clarinet I in Bb

78

f

84

90

Chťic aby spal
Andante con moto

mf

94

p

102

mp mf f

Adeste fideles
Grandioso

113

mf portamento

119

125

f

132

ff

Clarinet II in Bb

MALÁ VÁNOČNÍ HUDBA

Allegro moderato (q = 108)

Musical notation for the first system, starting with a treble clef, a key signature of two flats (Bb and Eb), and a 4/4 time signature. The music consists of a series of eighth and sixteenth notes, with a dynamic marking of *mf* *leggiero* at the end.

12

Půjdem spolu do Betléma

Musical notation for the second system, starting at measure 12. It includes a *rit.* (ritardando) marking and a first ending bracket labeled ① (q = 96). Dynamics include *f* and *p*.

21

Musical notation for the third system, starting at measure 21. The music continues with eighth and sixteenth notes, with a dynamic marking of *mf*.

Já bych rád k Betlému

30

Musical notation for the fourth system, starting at measure 30. It features a second ending bracket labeled ② (q = 102) and a change in key signature to one flat (Bb) and a common time signature (C).

36

Meno mosso

Musical notation for the fifth system, starting at measure 36. It includes a *non swing* marking and dynamics of *mf* and *f*.

Jingle Bells

42

③ Allergamente (q = 100)

Musical notation for the sixth system, starting at measure 42. It includes a third ending bracket labeled ③ and a change in key signature to three sharps (F#, C#, G#) and a 4/4 time signature. Dynamics include *p*.

54

④ Tempo di valzer

Musical notation for the seventh system, starting at measure 54. It includes a fourth ending bracket labeled ④ and a change in time signature to 3/4. Dynamics include *mf*.

60

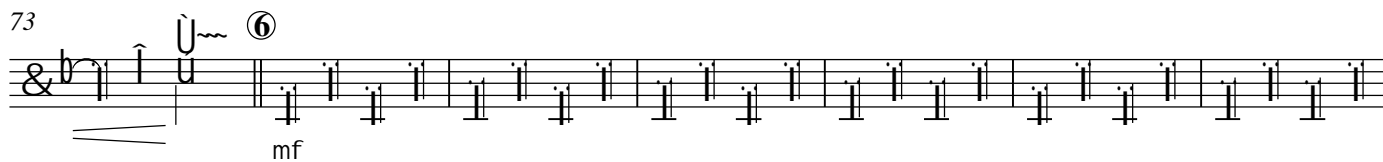
⑤ Allergamente (h = 100)

Musical notation for the eighth system, starting at measure 60. It includes a fifth ending bracket labeled ⑤ and a change in key signature to one flat (Bb) and a common time signature (C). Dynamics include *f*.

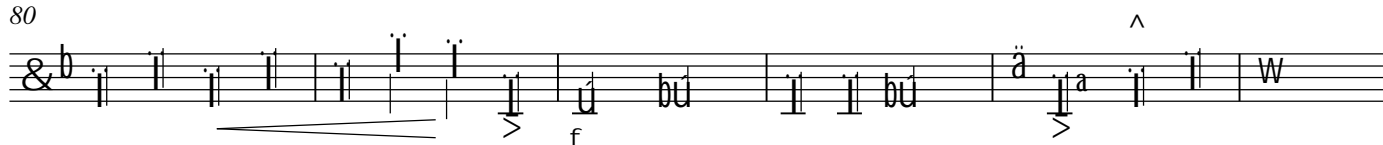
65



73



80

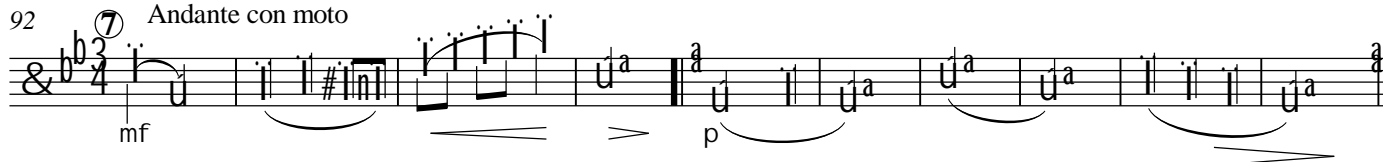


86

Chitíc aby spal

Andante con moto

92



102

Adeste fideles

Grandioso

113



121



129



135



Clarinet III in Bb

MALÁ VÁNOČNÍ HUDBA

Allegro moderato (q = 108)

f mf *leggiero*

12

rit.

Půjdem spolu do Betléma

① (q = 96)

f p

21

Já bych rád k Betlému

30

② (q = 106)

36

Meno mosso

mf *non swing* f

43

Jingle Bells

Allergamente (q = 100)

p

54

④ Tempo di valzer

f

64

⑤ Allergamente (h = 100)

65

mf

73

mf

80

f

86

f

Chîc aby spal

92

Andante con moto

mf

p

102

mp

mf

112

rit. .

Adeste fideles

Grandioso

f

mf portamento

120

<f

128

134

ff