

Concerto Op. 3 N°9

Horn in F 1

Vivaldi
Arrangement for Horn Quartet
by Jean-François Taillard

Allegro ♩ = 96

f

5

p *f*

9 3

15 *p*

19 *f*

23 *f* *tr* *mf* *f*

29

32 *f*

36 *f* *p* *f* *f*

42 *mf* *mf*

47 *f* *f*

Detailed description: This musical score is for the first horn part of Vivaldi's Concerto Op. 3 N°9. It is written in F major and 3/4 time, with a tempo of Allegro (♩ = 96). The score consists of ten staves of music. It begins with a dynamic of *f* (forte) and features a variety of rhythmic patterns, including eighth and sixteenth notes, as well as rests. The dynamics fluctuate throughout the piece, with markings for *f*, *p* (piano), *mf* (mezzo-forte), and *tr* (trill). A triplet of eighth notes is indicated at measure 9. The score concludes with a final *f* dynamic marking.

Larghetto $\text{♩} = 76$

7
14
18
23
27
30

f *p* *mf* *f*

Allegro $\text{♩} = 144$

8
13
19
25

f *mf* *f*

tr *tr* *tr*

30

tr 2 *p* *tr*

Staff 30-37: Treble clef, 3/4 time. Measures 30-34: eighth-note runs with trills. Measure 35: whole rest. Measure 36: quarter rest. Measure 37: eighth-note triplet. Dynamics: *p*. Trills (*tr*) are marked above measures 31, 34, and 37.

38

tr *mf* *f*

Staff 38-45: Treble clef, 3/4 time. Measures 38-41: eighth-note runs with trills. Measure 42: quarter rest. Measure 43: quarter rest. Measure 44: quarter note. Measure 45: eighth-note triplet. Dynamics: *mf* and *f*. Trill (*tr*) is marked above measure 38.

46

3 *p* *mf* 3

Staff 46-57: Treble clef, 3/4 time. Measures 46-49: eighth-note runs. Measure 50: quarter rest. Measure 51: eighth-note triplet. Measures 52-56: eighth-note runs. Measure 57: eighth-note triplet. Dynamics: *p* and *mf*. Triplet markings (*3*) are placed above measures 50, 51, and 57.

58

3 3 3 3 3 3 3 3 3 3 3 3 3 3

Staff 58-66: Treble clef, 3/4 time. Measures 58-66: eighth-note runs with triplet markings (*3*) above each measure.

67

3 3 3 3 3 3 *f* 4 *mf* *tr* *tr*

Staff 67-76: Treble clef, 3/4 time. Measures 67-72: eighth-note runs with triplet markings (*3*) above each measure. Measure 73: quarter rest. Measure 74: quarter note. Measure 75: eighth-note triplet. Measures 76-79: eighth-note runs with trills (*tr*) above. Dynamics: *f* and *mf*.

77

tr 2 *f* 3

Staff 77-88: Treble clef, 3/4 time. Measures 77-80: eighth-note runs with trills (*tr*) above. Measure 81: quarter rest. Measure 82: quarter rest. Measure 83: eighth-note triplet. Measures 84-87: eighth-note runs. Measure 88: eighth-note triplet. Dynamics: *f*. Trill (*tr*) is marked above measure 77.

89

mf

Staff 89-93: Treble clef, 3/4 time. Measures 89-93: eighth-note runs. Dynamics: *mf*.

94

f *f*

Staff 94-99: Treble clef, 3/4 time. Measures 94-99: eighth-note runs. Dynamics: *f*.

100

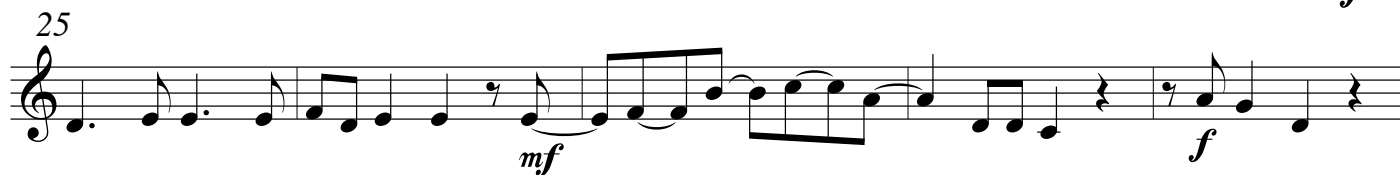
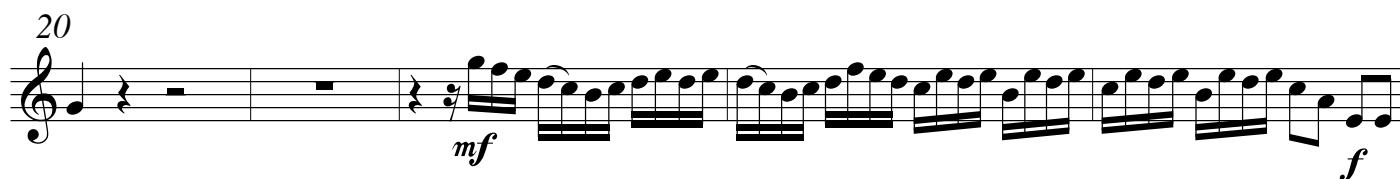
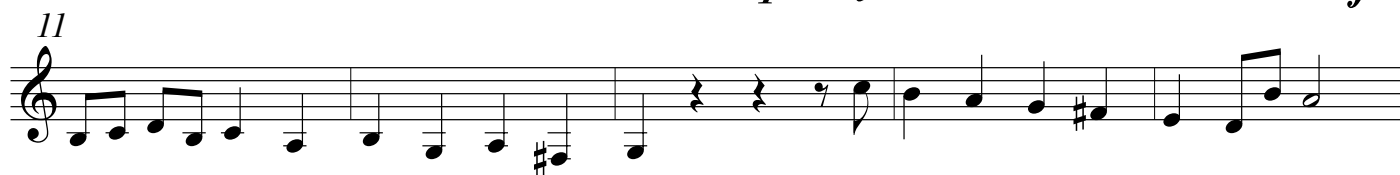
p *f* 2

Staff 100-102: Treble clef, 3/4 time. Measures 100-101: eighth-note runs. Measure 102: quarter rest. Measure 103: quarter rest. Dynamics: *p* and *f*. A fermata (*2*) is marked above measure 103.

Concerto Op. 3 N°9

Horn in F 2

Vivaldi

Arrangement for Horn Quartet
by Jean-François Taillard**Allegro** ♩ = 96

Larghetto $\text{♩} = 76$

7

13

19

25

30

f

p

p

f

Allegro $\text{♩} = 144$

7

13

21

27

p

f

mf

f

mf

35 *p* *mf*

41 *f*

48 *p*

55 *mf* *f* *mp* 3 3 3

63 3 3 3 3 3 3 3 3 3 *mf* *f* 2

71 *f*

80 *f*

86 *mf*

94 *mf* *f*

99 *p* *f*

Detailed description: This musical score consists of ten staves of music in a single system. The first staff (measures 35-40) starts with a piano (*p*) dynamic and a crescendo leading to a mezzo-forte (*mf*) dynamic. The second staff (measures 41-47) is marked *f*. The third staff (measures 48-54) is marked *p*. The fourth staff (measures 55-62) features dynamics *mf*, *f*, and *mp*, with three triplet markings (3) over the final measures. The fifth staff (measures 63-70) begins with six triplet markings (3) and includes dynamics *mf* and *f*, ending with a double bar line (2). The sixth staff (measures 71-79) is marked *f*. The seventh staff (measures 80-85) is marked *f*. The eighth staff (measures 86-93) is marked *mf*. The ninth staff (measures 94-98) features dynamics *mf* and *f*. The tenth staff (measures 99-100) starts with a piano (*p*) dynamic, has a crescendo to *f*, and ends with a fermata.

Concerto Op. 3 N°9

Horn in F 3

Vivaldi

Arrangement pour quatuor de cors
par Jean-François Taillard

Allegro ♩ = 96

f

5

p *f*

10

2

16

p

20

mf *f*

26

f *tr* *f*

30

f

35

p *f*

41

mf

45

f

Larghetto $\text{♩} = 76$

7 *f* *p*

13 *mf*

18 *tr*

22 *tr* *tr* *tr* *tr*

27

31 *f*

Allegro $\text{♩} = 144$

9 *p*

18 *f* *mf*

26 *f* *tr* *tr* *tr*

36

2

mf *f*

43

3

f

51

3

mf *f* *p*

61

mp

69

f 4

79

mf *f* *mf*

86

94

f

100

p *f*

Concerto Op. 3 N°9

Horn in F 4

Vivaldi

Allegro ♩ = 96Arrangement pour quatuor de cors
par Jean-François Taillard

New notation !

f

5

p *f* *mf*

10

15

p

19

mf

24

f

29

f *f*

34

39

p *f* *mf*

46

f

Larghetto

♩ = 76

5

8

11

15

21

26

30

Allegro $\text{♩} = 144$

8 *f* *mf*

16 *f*

25 *mf*

33 *p* *mf*

42 *f*

49 *p* *mf*

57 *f* 10 *f* *f*

76 *f*

84 *mf*

92 *f*

100 *p* *f*