

# HAMMAMATSU FANFARE

Trumpet 1 in C

for Brass Quintet or Brass Ensemble

PATRICK LONG

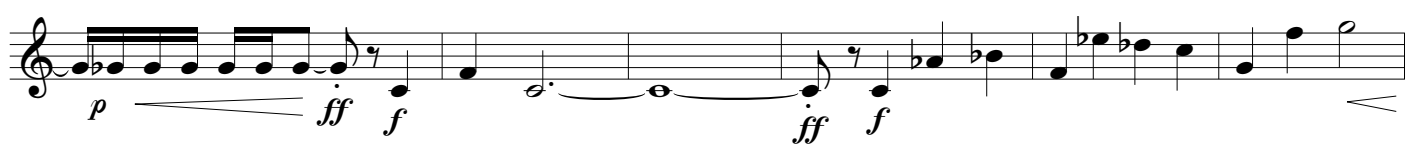
**Bold and aggressive** ♩ = 152



7



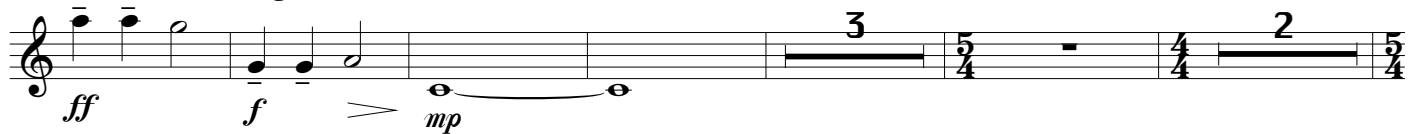
13



19

slight rit. ...

♩ = 144

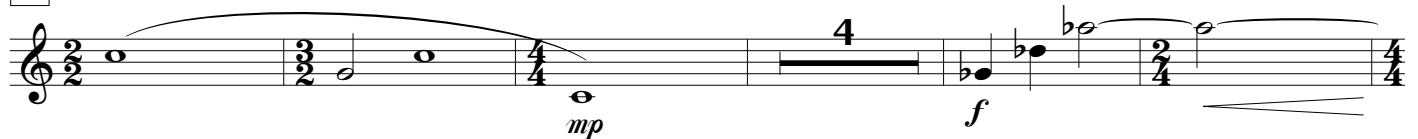


29

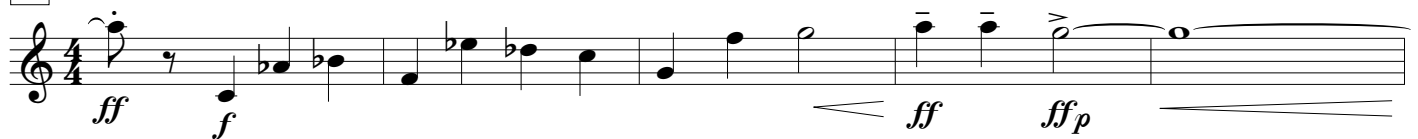


35

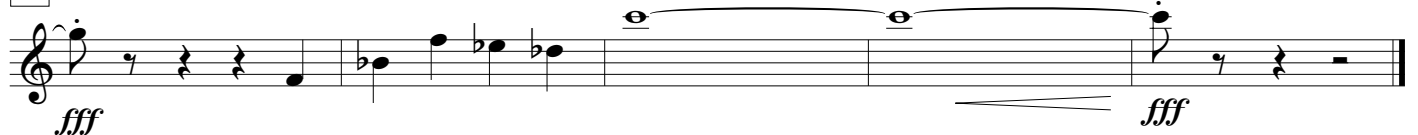
Tempo Primo



44



49



# HAMMAMATSU FANFARE

Trumpet 2 in C

for Brass Quintet or Brass Ensemble

PATRICK LONG

**Bold and aggressive** ♩ = 152

n. < *ff* n. *ff* *f*

7

*f mp* < *ff* *f* *f p* < *ff* *mf*

13

< *ff* *f* *ff* *f*

19

slight rit. . . ♩ = 144

*ff* *f* > *mp* *mf*

25

*f* *p*

30

*mp* *mp* *p*

37

**Tempo Primo**

*mp* *f* < *ff* *f*

44

*ff* *f* < *ff* *ff p* *fff*

50

*fff*

# HAMMAMATSU FANFARE

Horn in F

for Brass Quintet or Brass Ensemble

PATRICK LONG

**Bold and aggressive** ♩ = 152

7

14

21

♩ = 144

28

35

**Tempo Primo**

42

49

## HAMMAMATSU FANFARE

Trombone

for Brass Quintet or Brass Ensemble

PATRICK LONG

Bold and aggressive  $\bullet = 152$ 

4

*pp* < *ff* *fmp* < *ff f*

10

*ff* < *ff f* < *ff f*

17

slight rit. . .  $\bullet = 144$

< *ff* *f* > *p* *mp*

24

*mf* > *mp* < *mf*

31

> *p* > *p*

37

Tempo Primo

*mp* *mf* < *f* < *ff*

43

*ff* *f* < *ff* *ff p*

49

*fff* < *fff*

# HAMMAMATSU FANFARE

Tuba

for Brass Quintet or Brass Ensemble

PATRICK LONG

Bold and aggressive  $\bullet = 152$ 

4

*fmp* *ff* *f*

10

*p* *f*

16

slight rit. . .

*ff* *ff* *f* *p* *mp*

22

$\bullet = 144$

*mp*

27

2

*p* *mp* *mp*

33

*mp*

40

*f* *ff* *ff* *ff\_p*

48

*fff* *fff*