

Tin Box

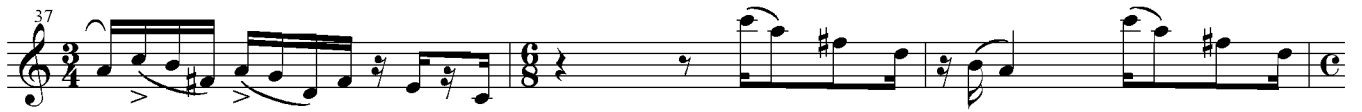
Gianfranco Gioia

Allegro Moderato

Soprano Saxophone

The musical score for Soprano Saxophone is written in treble clef with a common time signature (C). The piece is in the key of D major, indicated by two sharps (F# and C#). The tempo is marked 'Allegro Moderato'. The score consists of ten staves of music, with measure numbers 1, 4, 7, 10, 14, 17, 22, 25, 29, and 32 indicated at the beginning of their respective staves. The dynamics range from *mf* (mezzo-forte) to *f* (forte). The piece features a variety of rhythmic patterns, including eighth and sixteenth notes, and rests. A double bar line with a '2' above it appears at the end of the 17th measure, indicating a second ending. The score concludes with a final double bar line at the end of the 35th measure.

S. Sx.



Tin Box

Gianfranco Gioia

Allegro Moderato

Alto Saxophone

The musical score for Alto Saxophone consists of ten staves of music. The piece is in 4/4 time and begins with a treble clef and a key signature of one sharp (F#). The tempo is marked 'Allegro Moderato'. The score includes various dynamic markings: *mf* (mezzo-forte) at the beginning, *f* (forte) at measure 7, *p* (piano) at measure 8, *mf* at measure 12, *mp* (mezzo-piano) at measure 19, *f* at measure 25, and *mp* at measure 29. The score features a variety of rhythmic patterns, including eighth and sixteenth notes, and rests. There are also some unusual time signature changes, such as 3/4 and 6/8, indicated by the number of beams and the placement of the bar line. The piece concludes with a final *f* dynamic marking.

A. Sx.

35

36

37

38

40

41

43

44

45

46

47

48

49

50

52

53

56

57

60

61

63

64

Tin Box

Gianfranco Gioia

Allegro Moderato

Tenor Saxophone

The musical score for Tenor Saxophone is written in treble clef with a common time signature (C). The piece begins with a dynamic marking of *mf*. The first system (measures 1-4) features a rhythmic pattern of eighth notes with accents. The second system (measures 5-8) continues with similar rhythmic patterns, including a change to 3/4 time. The third system (measures 9-12) shows a dynamic shift to *f* and then *p*, with a change to 6/8 time. The fourth system (measures 13-16) returns to common time and includes a dynamic marking of *mf*. The fifth system (measures 17-20) continues with a dynamic of *mf*. The sixth system (measures 21-24) features a dynamic of *mp*. The seventh system (measures 25-28) has a dynamic of *f* followed by *mp*. The eighth system (measures 29-32) starts with *mf* and ends with *p*. The final system (measures 33-36) begins with a dynamic of *f*.

T. Sx.

35

37

40

43

p

45

47

49

mf

52

56

60

63

Tin Box

Олег Шамильевич для WWW.PARTITA.RU
Gianfranco Gioia

Allegro Moderato

Baritone Saxophone

The musical score for Baritone Saxophone is written in treble clef with a key signature of one sharp (F#) and a common time signature (C). The tempo is marked 'Allegro Moderato'. The score consists of ten staves of music, with measure numbers 4, 7, 10, 12, 15, 19, 22, 25, 29, and 32 indicated at the beginning of their respective staves. The dynamics range from *mf* (mezzo-forte) to *f* (forte). The piece features a variety of rhythmic patterns, including eighth and sixteenth notes, and rests. There are several changes in time signature, including 3/4, 9/4, and 6/8. The score includes various musical notations such as slurs, accents, and dynamic markings.

B. Sx.

35

37

40

43

45

47

49

52

56

60

63

p

mf