

Марш

Пикколо

Л. САВИНКОВ

Musical score for Piccolo, titled "Марш" (March) by L. Savinkov. The score is in 2/4 time, key of B-flat major, and tempo of 120. It consists of 8 staves of music with various dynamics, articulations, and performance instructions.

Staff 1: $\text{♩} = 120$, *ff*, 3, 3, *tr*, *mf*, *mf*, 1.

Staff 2: 9, *tr*, *tr*

Staff 3: 17, 1., 2., 2., *tr*, *ff*

Staff 4: 25, *tr*, *tr*, *tr*, *tr*

Staff 5: 33, *tr*, 1., 2., **Fine**

Staff 6: 40, 3, **TRIO**, 6, *mf*, 3, *tr*, 6

Staff 7: 56, 3, *f*, *tr*, 3, *tr*

Staff 8: 66, 4, 1., 2., *mf*, **D.S. al Fine**

Флейта

Марш

Л. САВИНКОВ

♩ = 120

ff 3 3 *mf* *mf* 1

9 *tr* *tr*

17 1. 2. 2 *tr* *tr* *ff*

25 *tr* *tr* *tr* *tr*

33 *tr* 1. 2. **Fine**

40 3 6 6 *mf* 3 *tr*

56 3 *f* 3 *tr*

66 4 1. 2. **D.S. al Fine** *mf*

Гобой

Марш

Л. САВИНКОВ

$\text{♩} = 120$

f **mf** **mf** **ff** **f** **mf**

9

17 1. 2. **2** *tr* *tr*

25 *tr* *tr* *tr* *tr* *tr* *tr*

33 1. 2. **Fine**

40 **3** **15** **f**

62

70 1. 2. **D.S. al Fine** **mf**

Марш

Кларнет Вб 1

Л. САВИНКОВ

$\text{♩} = 120$

f *mf* *mf*

9

17 *ff*

25 *tr*

33 *1.* *2.* **Fine**

40 *mf* *mf* **3**

50 *f*

60

69 *1.* *2.* **D.S. al Fine** *mf* *mf*

Марш

Кларнет В \flat 2

Л. САВИНКОВ

$\text{♩} = 120$

f *mf* *mf* *ff*

9

17 *ff*

25 *tr*

33 *Fine*

40 *mf* *mf*

50 *f*

60

69 *mf* *mf*

D.S. al Fine

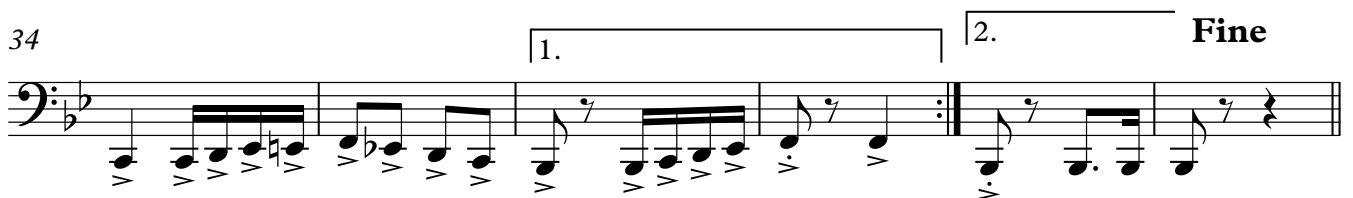
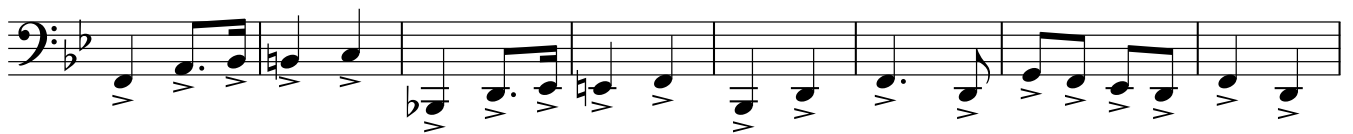
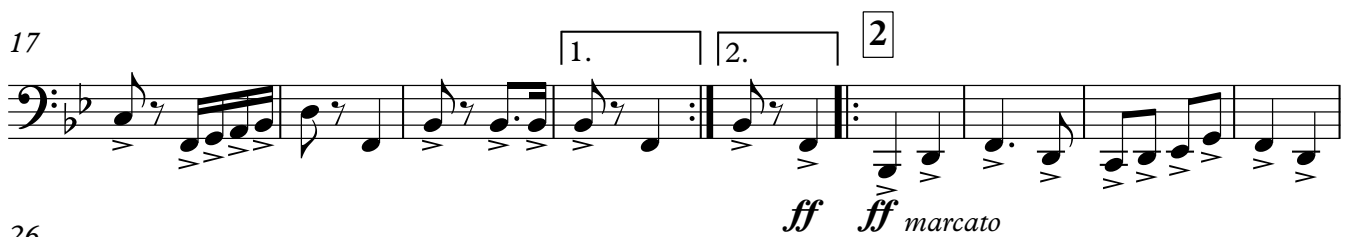
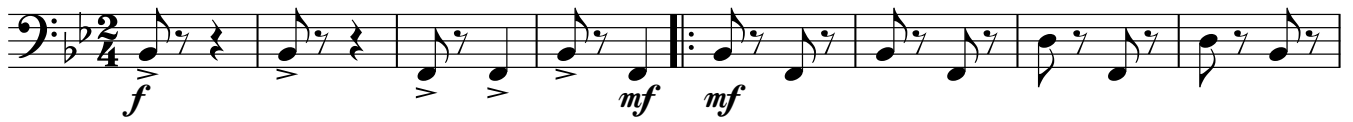
Фагот

Марш

Л. САВИНКОВ

♩=120

♩ 1



V.S.

2

Фагот

72

1. 2. **D.S. al Fine**

mf

Альт-саксофон

Марш

Л. САВИНКОВ

$\text{♩} = 120$

f *mf* **1**

11

19 **1.** **2.** **2** *ff* *ff* *marcato*

28

36 **1.** **2.** **Fine**

40 **3** *mf* *mf*

50 *f*

60

68 **1.** **2.** **D.S. al Fine** *mf* *mf*

Тенор саксофон

Марш

Л. САВИНКОВ

$\text{♩} = 120$

f **mf** **ff** **ff** **marcato** **f** **mf** **mf**

1 **2** **3**

Fine **D.S. al Fine**

Марш

Валторна F 1-2

Л. САВИНКОВ

$\text{♩} = 120$

9 *f* *mf* *mf* 1

17 1. 2. 2 *ff*

25 **Fine**

32 1. 2.

40 3 *mf*

47 3

55 3 *f*

62

69 1. 2. **D.S. al Fine** *mf* *mf*

Марш

Валторна F 3

Л. САВИНКОВ

$\text{♩} = 120$ § 1

9

17 1. 2. 2

25

32 1. 2.

40 3

48

56 3

63

69 1. 2. D.S. al Fine

f *mf* *mf* *ff* *mf* *f* *mf* *mf*

Fine

Марш

Труба В \flat 2

Л. САВИНКОВ

$\text{♩} = 120$

3

ff

mf

mf

8

17

1. 2.

ff

25

32

1. 2.

Fine

39

3

2 3 2 3

mf

49

2 2 3

f

60

69

1. 2. **D.S. al Fine**

mf

Марш

Тромбон 1

Л. САВИНКОВ

$\text{♩} = 120$

f *mf* *mf*

9

17 *ff* *ff marcato*

26 **Fine**

34

40 *mf*

47

55 *f*

62

69 *mf*

D.S. al Fine

Марш

Тромбон 2

Л. САВИНКОВ

$\text{♩} = 120$

♩ **1**

f *mf* *mf*

9

17

1. **2.** **2**

ff *ff marcato*

26

Fine

34

1. **2.**

40

3

mf

47

3

55

f

63

D.S. al Fine

69

1. **2.**

mf *mf*

Малый барабан

Марш

Л. САВИНКОВ

$\text{♩} = 120$
 $\frac{2}{4}$
f *mf*

9

16 *ff*

23

30

36 **Fine**

40 *mf*

47

55 *f*

63

2

Малый барабан

D.S. al Fine

69

Musical notation for a snare drum part, measures 69-72. The notation is on a single staff with a double bar line at the beginning and end. Measure 69 contains a quarter note G4, a quarter note A4, a quarter note B4, and a quarter note C5. Measure 70 contains a quarter rest, a quarter note G4, a quarter note A4, and a quarter note B4. Measure 71 contains a quarter note G4, a quarter note A4, a quarter note B4, and a quarter note C5. Measure 72 contains a quarter note G4, a quarter note A4, a quarter note B4, and a quarter note C5. The first ending (1.) is marked above the staff and covers measures 69-71. The second ending (2.) is marked above the staff and covers measures 72-73. The dynamic marking *mf* is placed below the staff in measures 71 and 73.

Тарелки Большой барабан

Марш

Л. САВИНКОВ

♩ = 120

1

f *mf* *mf*

12

1. 2. **2**

ff

23

32

1. 2. **Fine**

40

3

mf

51

f *f*

62

69

1. 2. **D.S. al Fine**

mf

Марш

Корнет Вб1

Л. САВИНКОВ

$\text{♩} = 120$

ff *mf* *mf* *ff* *mf* *f* *f* *mf*

8

17

25

Fine

32

40

50

64

71

D.S. al Fine

mf

Марш

Корнет В \flat 2

Л. САВИНКОВ

$\text{♩} = 120$

ff **mf** **mf** **ff** **f** **mf**

1 **2** **3** **2** **3** **5** **3** **1.** **2.** **1.** **2.** **3** **2** **1.** **2.** **D.S. al Fine**

Fine

mf

Альтгорн в Е♭

Марш

Л. САВИНКОВ

$\text{♩} = 120$

f *mf* *mf* **1**

9

17 **1.** **2.** **2** *ff*

25

32 **1.** **2.** **Fine**

40 **3** *mf*

48 **3**

56 **3** *f* *f* **V.S.**

Альтгорн в Е♭

63

69

1.

2.

mf

mf

D.S. al Fine

The image shows a musical score for Alto Horn in E-flat, consisting of two staves. The first staff begins at measure 63 and ends at measure 72. The second staff begins at measure 69 and ends at measure 72. The music is written in a treble clef with a key signature of one flat (E-flat). The first staff contains six measures of music, primarily consisting of eighth and sixteenth notes with rests. The second staff contains four measures, including a first ending (marked '1.') and a second ending (marked '2.'). The first ending leads back to the beginning of the second staff, and the second ending concludes the piece. The dynamic marking *mf* (mezzo-forte) is present in the second staff. The instruction **D.S. al Fine** is written at the end of the first staff.

Тенор 1

Марш

Л. САВИНКОВ

$\text{♩} = 120$

1

f *mf*

11

20 **1.** **2.** **2**

ff *ff marcato*

29

36 **1.** **2.** **Fine**

40 **3**

mf *mf*

50 *f*

59

68 **1.** **2.** **D.S. al Fine**

mf *mf*

Тенор 2 Эуфониум

Марш

Л. САВИНКОВ

$\text{♩} = 120$

f *mf* *mf* **1**

9

17 **1.** **2.** **2** *ff*

25

32 **1.** **2.** **Fine**

40 **3** *mf*

48 **3**

56 **3** *f* *f*

V.S.

Тенор 2 Эуфониум



Марш

Баритон

Л. САВИНКОВ

$\text{♩} = 120$ § 1

f *mf*

11

20 1. 2. *marcato* *ff* *ff*

29

Fine

36 1. 2.

40 3. *mf* *mf*

50 *f*

59

68 1. 2. **D.S. al Fine** *mf* *mf*

Tuba

Марш

Л. САВИНКОВ

♩=120

§ 1

9 *f* *mf* *mf*

17 1. 2. 2

26 *ff* *ff* *marcato*

34 1. 2.

40 3

47

55 *f*

63

70 1. 2. **D.S. al Fine**