

Flute

# ЧУДО-ПЕСЕНКА

Л. Лядова  
инстр. А. Школяр

16

*f*

1 4

1. 2.

*f*

3 5

*f*

4 12 5

*f*

4 5

*f*

6 15 7

*f*

Clarinet B $\flat$  1

# ЧУДО-ПЕСЕНКА

Л. Лядова  
инстр. А. Школяр

16

*f*

1 4 4

1. 2.

2 *f*

3 *f*

4 12 5

4 5 *f*

6 15 7 *f*

Clarinet Bb 2

## ЧУДО-ПЕСЕНКА

Л. Лядова  
инстр. А. Школяр

16

*f*

1 4 4

1. 2.

2 *f*

5

3 8 4 12

5 4

5 *f*

6 15 7

*f*

Alto Saxophone 1

# ЧУДО-ПЕСЕНКА

Л. Лядова  
инстр. А. Школяр

♩ = 132

*f* *mf*

2

1 3 Cl. Cl.

2 Cl. 1. 2.

2 *f*

5 3 8 4

3 5 Cl. Cl.

2 2 *mf*

6 *f*

2

7

2

Alto Saxophone 2

# ЧУДО-ПЕСЕНКА

Л. Лядова

инстр. А. Школяр

$\text{♩} = 132$

*f* *mf*

2

1 3 2

1. 2.

2

*f*

5 3 8 4

3

5 2

2

*mf*

6 2

*f*

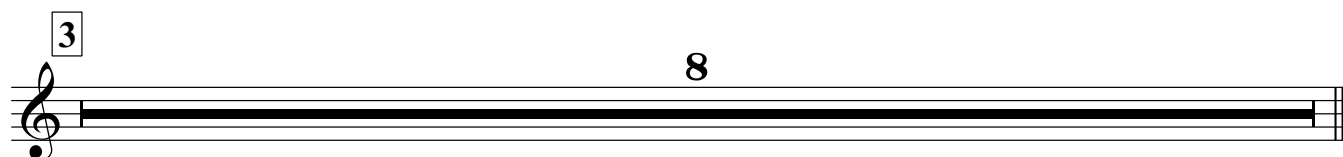
7

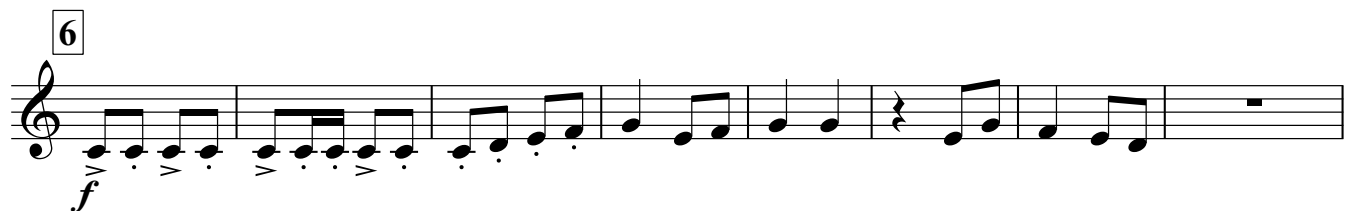
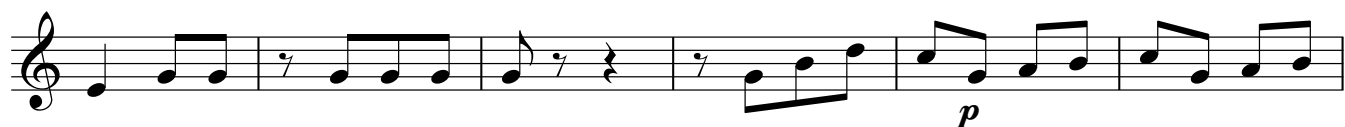
2

Trumpet B $\flat$ 

# ЧУДО-ПЕСЕНКА

Л. Лядова  
инстр. А. Школяр



Trumpet B $\flat$ 

Малый барабан

# ЧУДО-ПЕСЕНКА

Л. Лядова  
инстр. А. Школяр

$\text{♩} = 132$

*f*

4

4 8

1

1. 2.

2

*f*

4

3

4 4 4

5

4

6

*f*

4

7



Тарелки Большой барабан

## ЧУДО-ПЕСЕНКА

Л. Лядова  
инстр. А. Школяр

$\text{♩} = 132$

*f*

4 8

1

1. 2.

2

*f*

3 4 8

4 4 8 12

5

*p* *mf* *f*

6 4 8 12

*f*

7

Cornet B $\flat$  1

# ЧУДО-ПЕСЕНКА

Л. Лядова  
инстр. А. Школяр

$\text{♩} = 132$

*f* *mf*

1

1.

2.

*f*

3

8

Cornet B $\flat$  1

4

5

*p*

*mf* *f*

6

*f*

*f*

7

Cornet B $\flat$  2

# ЧУДО-ПЕСЕНКА

Л. Лядова  
инстр. А. Школяр

$\text{♩} = 132$

*f* *mf*

1

1.

2.

*f*

3

8

Cornet B $\flat$  2

4

5

6

7

*mf* *f* *p* *f*

Detailed description: This page contains musical notation for a Cornet B $\flat$  part, specifically measures 4 through 7. The notation is written on a single treble clef staff. Measure 4 begins with a box containing the number '4' and contains a sequence of eighth and quarter notes. Measure 5 starts with a box containing '5' and includes a double bar line, followed by notes with slurs and accents. Measure 6 begins with a box containing '6' and features a series of sixteenth notes with slurs and accents, marked with a forte (*f*) dynamic. Measure 7 starts with a box containing '7' and continues with eighth and quarter notes, including slurs and accents. Dynamics such as *mf*, *f*, and *p* are indicated throughout the score. The piece concludes with a double bar line at the end of measure 7.

Horn Eb 1

## ЧУДО-ПЕСЕНКА

Л. Лядова  
инстр. А. Школяр

$\text{♩} = 132$

*f* *mf*

4 4

1

1. 2.

2 *f*

3 4

4 4

5

*p* *mf* *f*

6 *f*

4

7

Horn Eb 2

# ЧУДО-ПЕСЕНКА

Л. Лядова  
инстр. А. Школяр

$\text{♩} = 132$

*f* *mf* 4

1.

2.

*f* 3

4 4

*p* *mf* *f*

6

7

Тенор 1

# ЧУДО-ПЕСЕНКА

Л. Лядова  
инстр. А. Школяр

$\text{♩} = 132$

*f* *mf*

2

1 3 5

1. 2 2. 2 *f*

3 8 4

3 5

6 *p* *mf* *f*

6 *f*

7



Тенор 2

# ЧУДО-ПЕСЕНКА

Л. Лядова  
инстр. А. Школяр

$\text{♩} = 132$

*f* *mf*

4

1

1. 2.

*f*

3 4

4 4 4

5

6 *f* *p* *mf* *f*

7

4 4

Baritone

# ЧУДО-ПЕСЕНКА

Л. Лядова

инстр. А. Школяр

$\text{♩} = 132$

*f* *mf*

2

1 3 5

1. 2 2. 2 *f*

3 8 4

3 5

6 *p* *mf* *f*

6 *f*

7

Bass 1

# ЧУДО-ПЕСЕНКА

Л. Лядова  
инстр. А. Школяр

$\text{♩} = 132$

*f* *mf*

1

1. 2.

2

3 4

4

5

*p* *mf* *f*

6

4

7

Detailed description of the musical score: The score is for Bass 1 in 2/4 time, B-flat major. It begins with a tempo marking of quarter note = 132. The first staff starts with a forte (*f*) dynamic and includes accents. The second staff is marked mezzo-forte (*mf*). The piece features several first and second endings, marked with numbers 1 and 2. Dynamics vary throughout, including piano (*p*), mezzo-forte (*mf*), and forte (*f*). There are numerous slurs and accents throughout the score. The piece concludes with a final cadence.

Bass 2

## ЧУДО-ПЕСЕНКА

Л. Лядова

инстр. А. Школяр

♩=132

Musical score for Bass 2, titled "ЧУДО-ПЕСЕНКА" (Wonder Song) by L. Lyadova, arranged by A. Shkolyar. The score is in bass clef, 2/4 time, and B-flat major. The tempo is marked as ♩=132. The score consists of 12 staves of music, featuring various dynamics and articulations.

Dynamics and articulations include:

- f* (forte) with accents (>) on the first staff.
- mf* (mezzo-forte) on the second staff.
- f* (forte) on the fifth staff.
- p* (piano) on the tenth staff.
- mf* (mezzo-forte) on the tenth staff.
- f* (forte) on the tenth staff.
- f* (forte) on the tenth staff.

The score includes several first and second endings, marked with "1." and "2." in boxes. There are also four-measure rests indicated by "4" in boxes. The piece concludes with a final cadence on the twelfth staff.