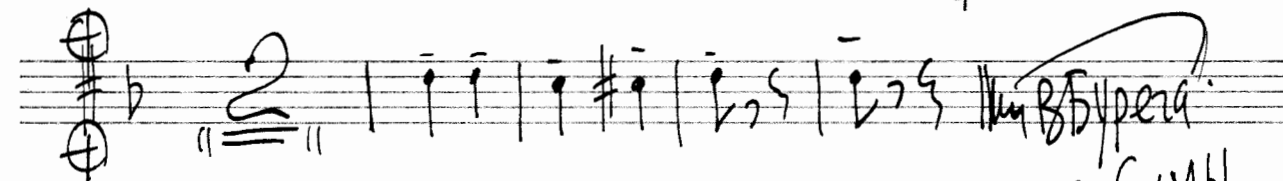
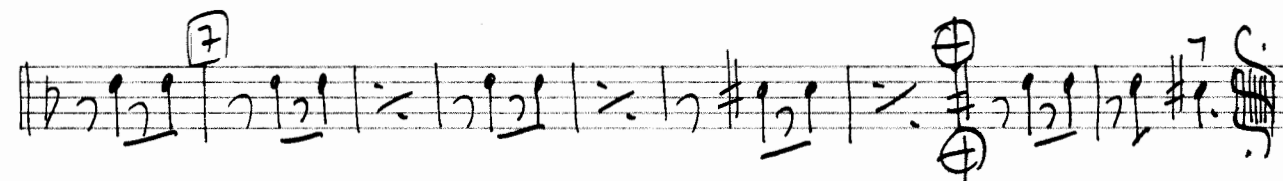
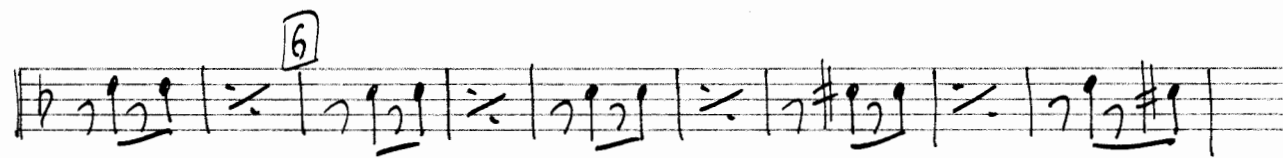
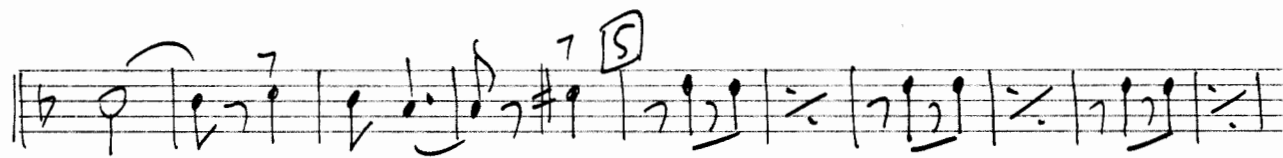
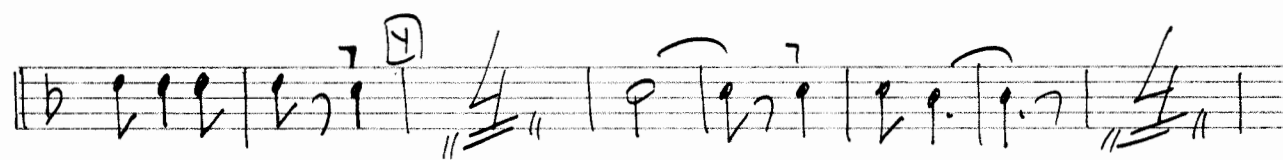
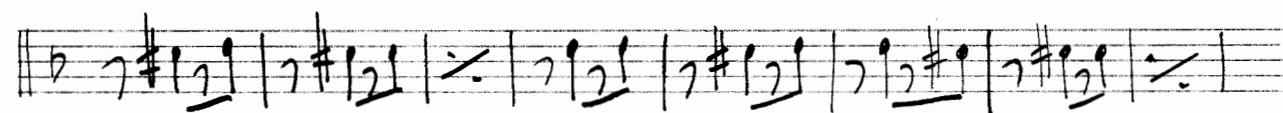
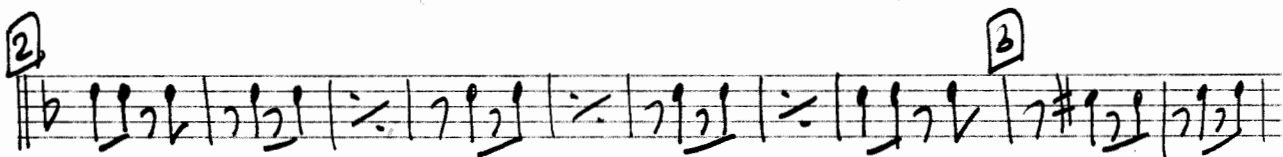
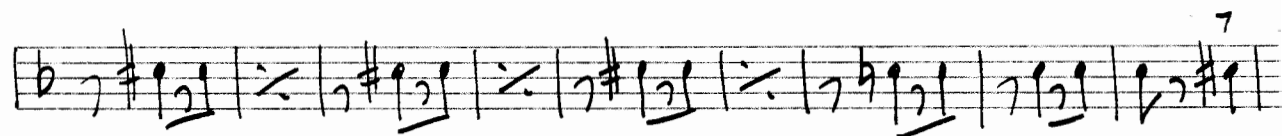
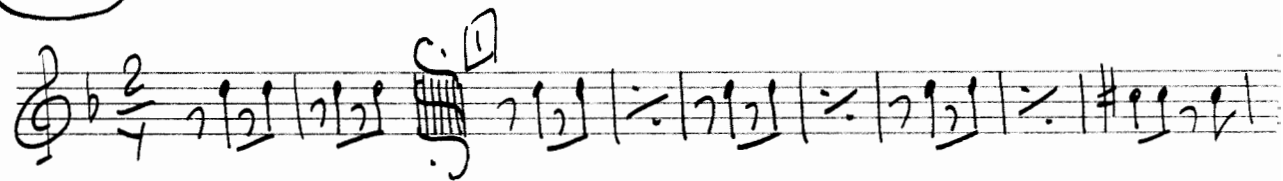


АЛЫТ 1

33 НА ЧАС РАНЬШЕ (ФРЕЙЛЕХС)



В. Буряев  
2. Сумы

АЛТ 2

33 НА ЧАС РАНЬШЕ (ФРЕЙЛЕХС)

Handwritten musical score for Alto 2, titled "33 НА ЧАС РАНЬШЕ (ФРЕЙЛЕХС)". The score is written on ten staves. The first staff begins with a treble clef, a key signature of one flat (B-flat), and a 2/4 time signature. The music consists of eighth and sixteenth notes, with various rests and repeat signs. There are seven numbered first endings (1-7) marked with circled numbers. The score concludes with a double bar line and a fermata. The bottom two staves show a bass clef and a 2/4 time signature, with a double bar line and a fermata at the end.

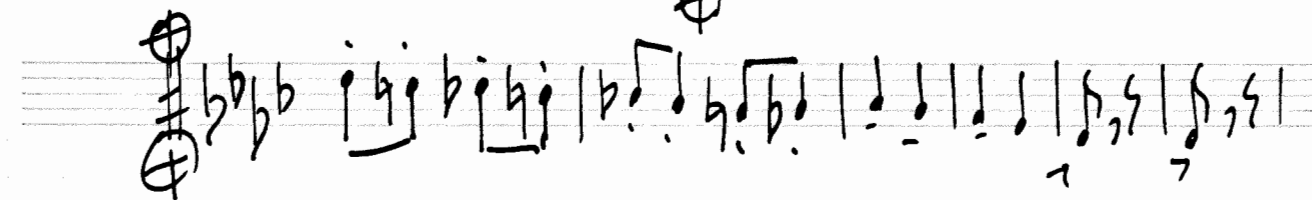
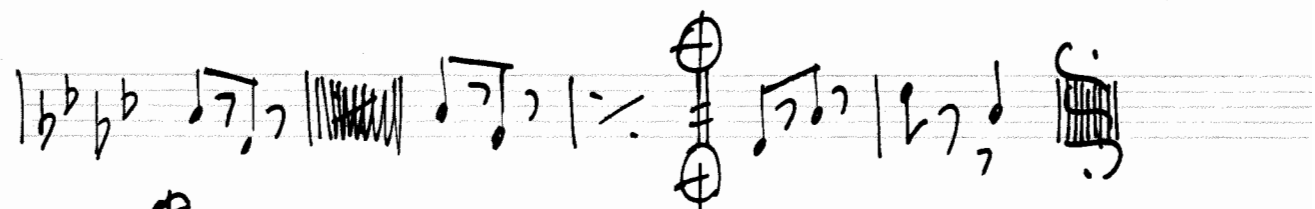
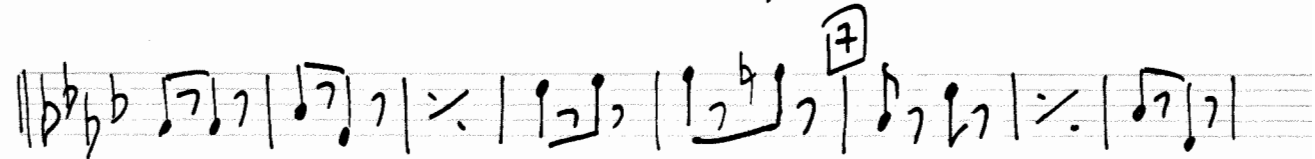
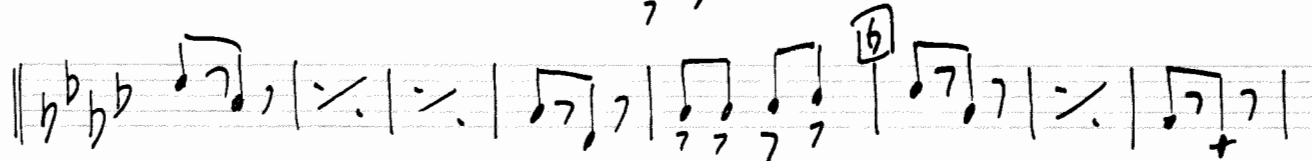
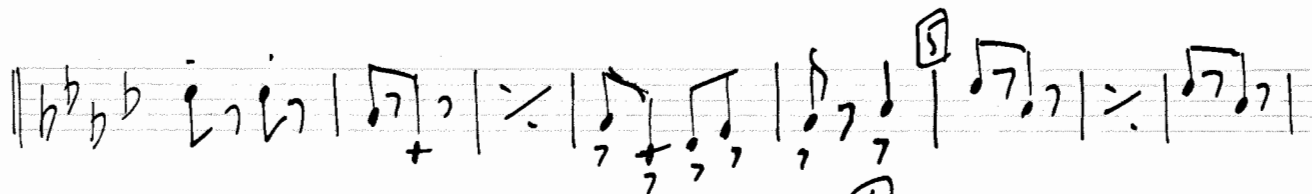
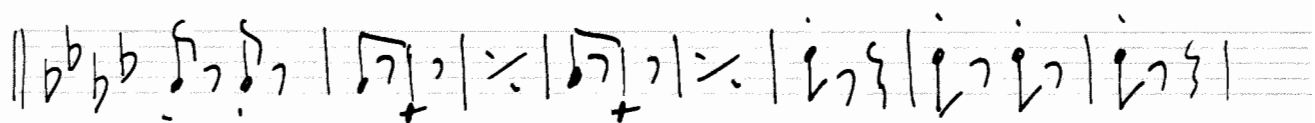
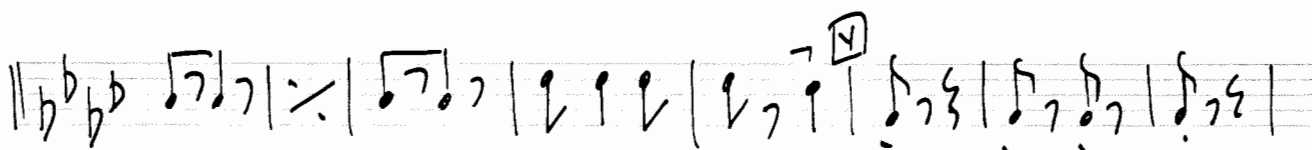
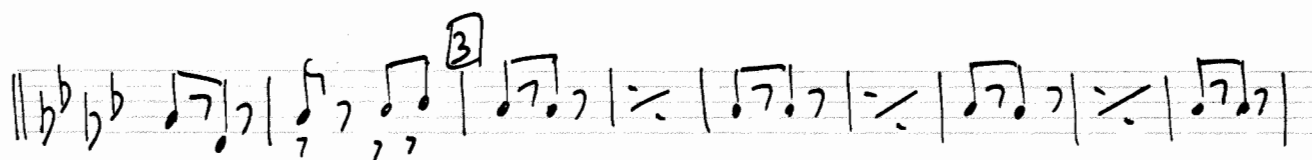
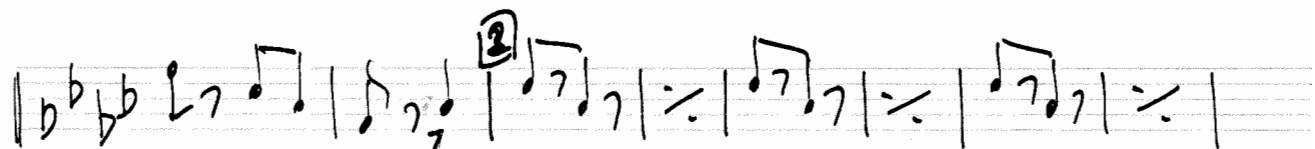
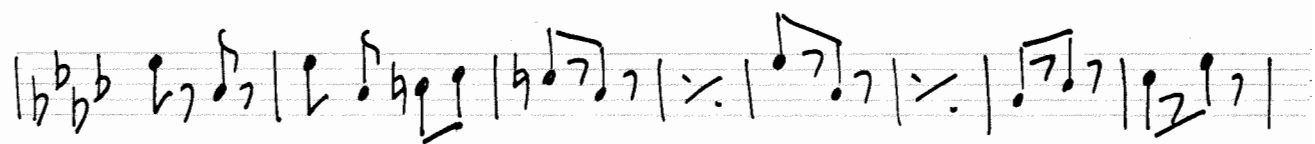
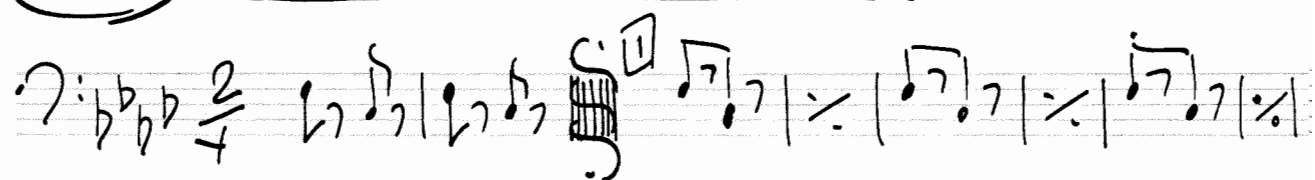
Баритон

33 НА ЧАС РАНЬШЕ (ФРЕЙЛЕХС)

Handwritten musical score for Baritone, titled "33 НА ЧАС РАНЬШЕ (ФРЕЙЛЕХС)". The score is written on ten staves. It begins with a treble clef, a key signature of two flats (B-flat and E-flat), and a 2/4 time signature. The first staff contains a double bar line, a "2" with a double underline, a box containing a chord diagram, and a "4" with a double underline. The music consists of quarter and eighth notes, some beamed together, with various accidentals (sharps, flats, naturals) and slurs. Fingering numbers 1 through 7 are written above specific notes. The score concludes with a double bar line and a final chord diagram.

Бас 1

33 НА ЧАС РАНЬШЕ (ФРЕЙЛЕХС)



33 НА ЧАС РАНЬШЕ (ФРЕЙЛЕХС)

Handwritten musical score for bass, titled "33 НА ЧАС РАНЬШЕ (ФРЕЙЛЕХС)". The score consists of 11 staves of music in a 2/4 time signature with a key signature of three flats (B-flat, E-flat, A-flat). The notation includes various rhythmic patterns, accidentals, and dynamic markings. Circled numbers 1 through 7 are placed above specific measures, likely indicating fingerings or first endings. The score concludes with a double bar line and a final chord marked with a circled cross symbol.

# Кларнет 1

33

## НА ЧАС РАМЬШЕ (ФРЕЙЛЕХС)

Handwritten musical score for Clarinet 1, titled "НА ЧАС РАМЬШЕ (ФРЕЙЛЕХС)". The score is written on ten staves. It begins with a treble clef, a key signature of two flats (B-flat and E-flat), and a 2/4 time signature. The music features various rhythmic patterns, including eighth and sixteenth notes, and rests. There are several circled numbers (1, 2, 3, 4, 5, 6, 7) and a circled '8' indicating specific measures or sections. The score concludes with a double bar line and a final key signature change to one flat (B-flat).

# Кларнет 2

## 33 НА ЧАС РАНЬШЕ (ФРЕЙЛАХС)

Handwritten musical score for Clarinet 2, titled "33 НА ЧАС РАНЬШЕ (ФРЕЙЛАХС)". The score is written on ten staves. The first staff is in treble clef with a key signature of two flats (Bb, Eb) and a 2/4 time signature. The second staff is in bass clef with the same key signature. The score includes various musical notations such as notes, rests, slurs, and dynamic markings like "ff" and "f". There are also numerical markings in boxes (1, 2, 3, 4, 5, 6, 7) and underlines. The piece concludes with a double bar line and a final chord in the bass clef.

# Корнет 1

33

НА ЧАС РАНЬШЕ (фрейлекс)

Handwritten musical score for Cornet 1, titled "НА ЧАС РАНЬШЕ (фрейлекс)". The score is written on ten staves. It begins with a treble clef, a key signature of one flat (B-flat), and a 2/4 time signature. The music features various rhythmic patterns, including eighth and sixteenth notes, and rests. There are several measures with a "7" written below them, indicating a specific fingering. The score includes several measures with circled numbers 1 through 7, likely indicating first endings or specific techniques. The piece concludes with a double bar line and a final chord marked with a circled cross symbol.



Корнет 2

33 НА ЧАС РАКЪШЕ (Фрейлехс) КОРНЕТ II

Handwritten musical score for Cornet II, titled "На час ракъше (Фрейлехс)". The score is written on ten staves. The first staff begins with a treble clef, a key signature of two flats (B-flat and E-flat), and a 2/4 time signature. The music consists of a series of eighth and sixteenth notes, often beamed together. There are several first endings marked with a box containing the number 1. The score includes various musical notations such as slurs, ties, and dynamic markings. The piece concludes with a double bar line and a final cadence. The bottom two staves show a bass clef and a key signature of two flats, with a 2/4 time signature, likely representing the bass line or a second part of the instrument.

Тенор 1

33 НА ЧАС РАМЬШЕ (ФРЕЙЛЕХС)

Handwritten musical score for Tenor 1, titled "33 НА ЧАС РАМЬШЕ (ФРЕЙЛЕХС)". The score is written on ten staves in G major (one sharp) and 2/4 time. It includes various musical notations such as notes, rests, slurs, and fingerings. The first staff begins with a treble clef, a key signature of one sharp (F#), and a 2/4 time signature. The piece starts with a double bar line, followed by a whole rest, a boxed '1' above a whole note G, and another double bar line. The melody continues with quarter and eighth notes, often beamed together. There are several boxed numbers (2, 3, 4, 5, 6, 7) indicating fingerings. The score concludes with a double bar line and a final whole note G. A bass clef staff at the bottom contains a bass line with notes and rests, including a circled 'X' above the first note and a circled 'X' below the second note.

Тенор 2

33 НА ЧАС РАНЬШЕ (ФРЕЙЛЕХС)

Handwritten musical score for Tenor 2, titled "33 НА ЧАС РАНЬШЕ (ФРЕЙЛЕХС)". The score is written on ten staves. The first staff is in treble clef, 2/4 time, with a key signature of one flat (Bb). The music consists of eighth and sixteenth notes, with some rests. There are several boxed numbers (1, 2, 3, 4, 5, 7, 16) indicating measure numbers. The score ends with a double bar line and a repeat sign. The bottom two staves show a bass clef and a key signature of one flat, with a "2" in a box, possibly indicating a second ending or a specific measure.

# Труба

33

НА ЧАС РАНЬШЕ (ФРЕЙЛЕРС)

Handwritten musical score for trumpet, titled "НА ЧАС РАНЬШЕ (ФРЕЙЛЕРС)". The score is written on ten staves. It begins with a treble clef, a key signature of two flats (B-flat and E-flat), and a 2/4 time signature. The music features a variety of rhythmic patterns, including eighth and sixteenth notes, and rests. There are several dynamic markings, such as "f" and "p". The score includes numbered measures (1, 2, 3, 4, 5, 6, 7) and repeat signs. The piece concludes with a double bar line and a final chord.