

СОНАТА

для валторны и фортепиано

Corno in Fa

А. АГАБАБОВ

Maestoso

The musical score for the Corno in Fa part, Maestoso section, consists of six staves. The first two staves are in bass clef, and the last four are in treble clef. The key signature has one sharp (F#). The first staff begins with a 2/2 time signature and contains a first ending bracket labeled '1' over a triplet of eighth notes. The second staff continues with more triplet markings. The third staff features a first ending bracket labeled '1' and a dynamic marking of *mf*. The fourth staff is marked *Moderato* and contains a dynamic marking of *mf*. The fifth and sixth staves continue the melodic line, with a second ending bracket labeled '2' at the beginning of the sixth staff and a final dynamic marking of *mf*.

2

Corno in Fa



3



Allegro



4



5



6



Corno in Fa

3

Musical score for Horn in F, measures 7-12. The score is written in treble clef with a key signature of one flat (B-flat) and a time signature of 3/4. The music features various dynamics and articulations.

Measures 7-8: Dynamics include *mp* and *sub. pp*. Measure 8 includes the dynamic *mf*.

Measures 9-10: Dynamics include *f* and *mf*.

Measures 11-12: Dynamics include *p*, *mp*, and *f*. Measure 12 includes the dynamic *mf*.

Measure 11 includes a slur over two notes. Measure 12 includes a slur over four notes.

Measure numbers 7, 8, 9, 10, 11, and 12 are indicated in boxes above the staves.

4

Corno in Fa

Musical score for Horn in F, measures 13-16. The score is written on a single staff in treble clef with a key signature of one sharp (F#) and a 3/4 time signature. Measure 13 begins with a triplet of eighth notes. Measure 14 features a triplet of eighth notes and a half note. Measure 15 starts with a whole note marked with a '6' above it, followed by a quarter note marked with a '1' above it, and a quarter note marked with 'd=d' above it. Measure 16 contains a half note marked with a '5' above it and the instruction *tenuto*. The piece concludes with a *mp* (mezzo-piano) dynamic marking.

Corno in Fa

5

Musical score for Horn in F, measures 17-22. The score is written on a single staff in treble clef. Measure 17 begins with a *mp* dynamic marking and contains a sequence of eighth and quarter notes. Measure 18 features a whole note with a fingering of 6. Measure 19 shows a whole note with a fingering of 1, followed by a half note with a fingering of 4, and another whole note with a fingering of 1. Measure 20 starts with a *p* dynamic marking and contains a sequence of eighth and quarter notes. Measure 21 features a whole note with a fingering of 2, followed by a half note with a fingering of 1, and another whole note. Measure 22 shows a whole note with a fingering of 2, followed by a half note with a fingering of 2, and another whole note with a fingering of 8. The score includes various musical notations such as dynamics (*mp*, *p*), fingering numbers, and measure numbers (17-22).

Corno in Fa

23

mf

24

f

25

mf

26

27

mf

cresc.

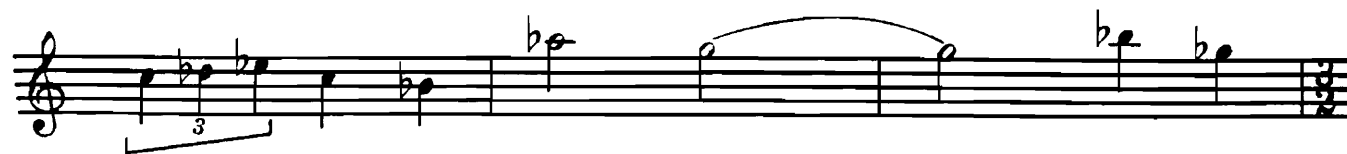
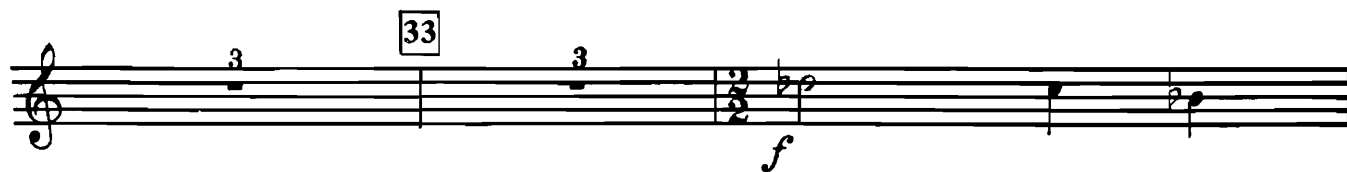
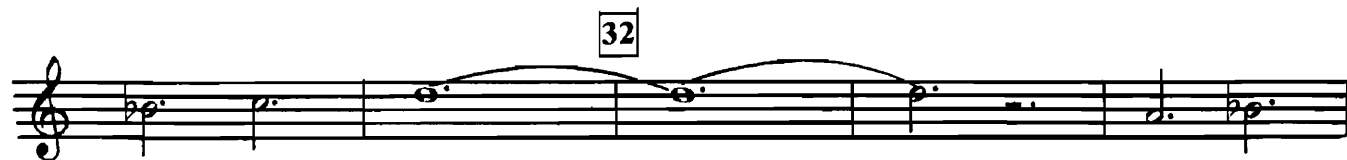
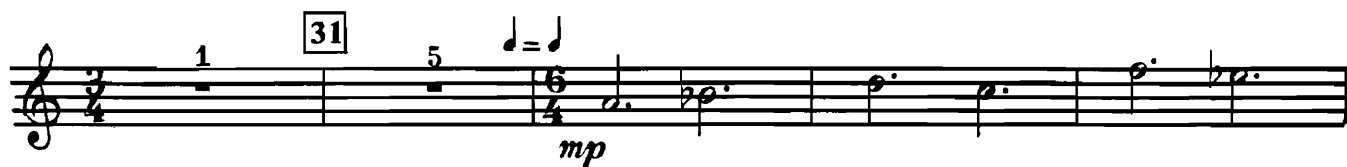
28

29

Corno in Fa

7

30



Corno in Fa

35

1 1 *mf*

3 3 3 3 3 3

3 3 3 3

36

37 38 1

9 10

sf mf

39 Cantabile *mp*

3

40

Corno in Fa

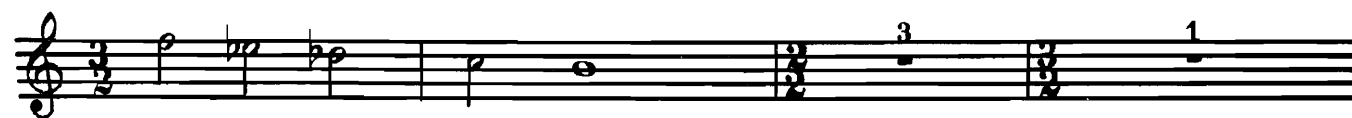
9



41



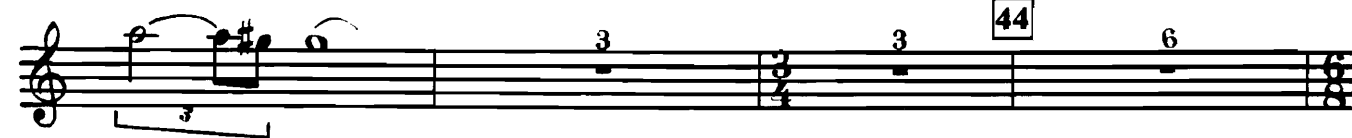
42



43



44



Corno in Fa

Cadenza

45 *p*

46 *coperto* *6*

tr

simile

p

47 *f*

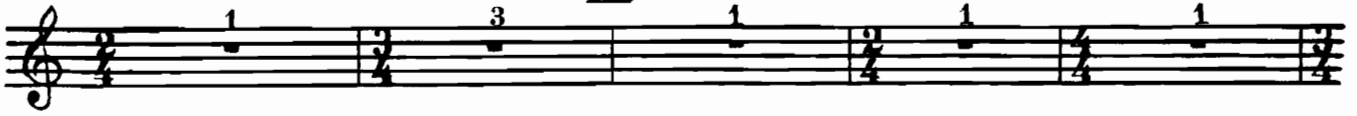
48 *1* *5*

Detailed description: This page contains the musical score for the Cadenza section of the Horn in F part. It consists of ten staves of music. The first staff begins with measure 45, marked *p*. The second staff contains measure 46, marked *coperto* and *6*. The third staff features a trill (*tr*) and a fermata. The fourth staff is marked *simile*. The fifth staff has a *p* dynamic and a sixteenth-note figure with a fermata. The sixth staff contains triplets. The seventh staff has a fermata. The eighth staff is marked *f* and contains measure 47. The ninth staff contains measure 48, with fingerings *1* and *5* indicated. The music is written in treble clef with a key signature of one flat and a 2/4 time signature.

Corno in Fa

11

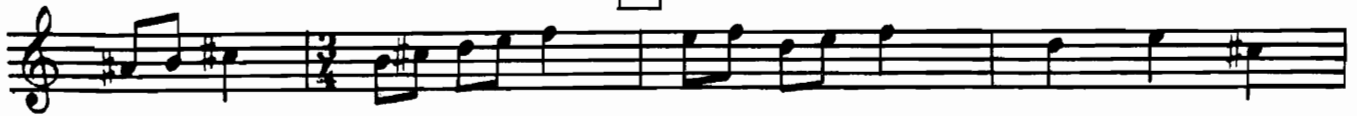
49



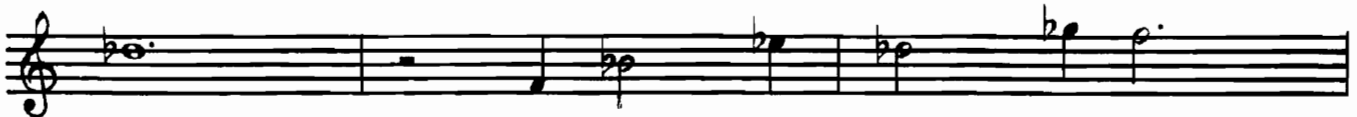
50



51



52



53



Corno in Fa

54

3 1 1 1 1

55

1 1 1 1

p

56

1 1 1

mp

57

mf

58

1 2 coperto

p