

# ВАРИАЦИИ на тему В. Моцарта

## Валторна фа

Б. АСАФЬЕВ  
(1864—1949)

Adagio

Тема

## Вар. I L'istesso tempo

## Валторна фа

*p*<sup>3</sup>  
*p*  
*pp*  
*pp*  
*p* ————— *f*

Вар. II  
Adagio

*f*<sup>3</sup>  
*f*  
*più f*  
*p* ————— *f*  
*p*

## Валторна фа

Музыкальный фрагмент для валторны фа. Состоит из нескольких систем нот. Включает следующие элементы:

- Ноты в басовом и тенорном регистрах.
- Динамические обозначения: *p*, *f*, *pp*, *ppp*.
- Темповые и артикуляционные указания: *rall.*, *a tempo*, *Allegretto*, *1*, *2*.
- Сложные ритмические рисунки, включая шестнадцатые и тридцатые доли.
- Связки нот, соединенные скобками.

## Валторна фа

Вар. IV (Финал)

Allegro moderato

*p* *pp* *p* *pp*

*f* *p* *p*

*pp*

*p* *pp* *p* *pp*

*f* *p*

*p*<sup>3</sup> *pp*

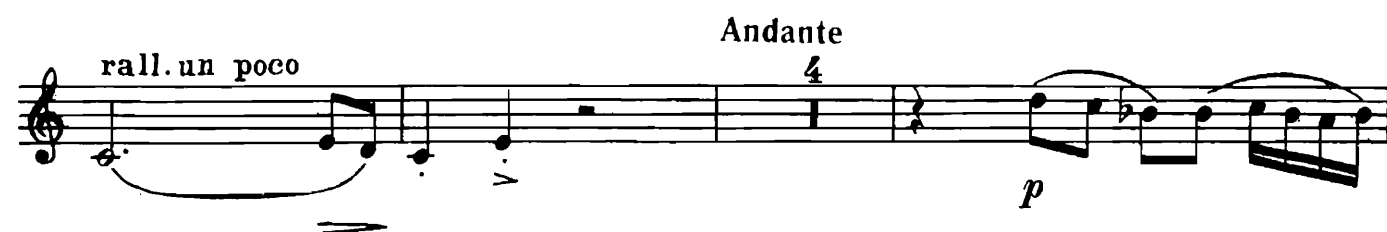
*p*

Poco agitato

*3*

## Валторна фа

Темпо I



## Валторна фа

Tempo I

Musical score for the first system of the horn part. It consists of three staves. The first staff begins with a treble clef, a key signature of one sharp (F#), and a common time signature. It starts with a piano (*p*) dynamic and a *cresc.* marking. The second staff continues with piano (*p*) and *cresc.* dynamics, featuring several triplet markings. The third staff is labeled "Cadenza" and begins with a forte (*f*) dynamic, followed by a *ten.* marking. The section concludes with a fermata.

Tempo I

Musical score for the second system of the horn part, consisting of six staves. It begins with a treble clef, a key signature of one sharp (F#), and a common time signature. The first staff starts with a piano (*p*) dynamic and includes a first ending bracket labeled "1". The second and third staves continue with piano (*p*) dynamics and feature multiple triplet markings. The fourth staff shows a melodic line with a fermata. The fifth staff includes a *tr* (trill) marking. The sixth staff concludes with a *poco sostenuto* marking and a forte (*f*) dynamic.