

PETITE SUITE LATINE

Alto Sax.

1 часть

1

Jérôme NAULAIS

Lent

ff quasi cadence

4 *ff* *pp* **Lent** ♩=56

8 *f*

13 **Paso Doble** ♩=92

19 *pp* *mf* *f* *mp* *f* *tr*

24 *mp* *f*

29 *cédez* **A tempo** 2

35 *mf* *f*

40 *mf* *mp* *cresc.* *f*

44 *f*

48 *fp* *f* *mf* *ff* **senza rall.**

Alto Sax.

2

2 часть

♩=100 Valse lente

3

mf

10

f

17

mp *f*

23 *rall.* **Cha-cha** ♩=120 *mp* *mf*

31

35 *f* *mp* *f*

39

45 *p sub.* *f* *mp*

50 *f*

54 *mp* *ff*

61 *p* *cresc. poco a poco*

64 *senza rall.* *ff*

Alto Sax.

3 часть

3

Tango ♩=112

3

mf

8

f *mp*

13

18

p *mf*

cédez **A tempo**

23

28

f

34

mf

38

mp *f*

42

mp *mf*

47

p *f*

V.S.

4

Alto Sax.

51

3 3 3

mp *f*

54

fp *ff*

senza rall.

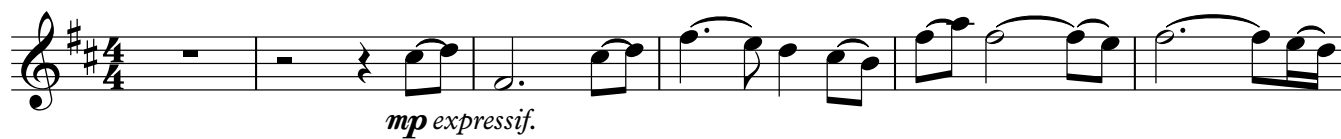
Detailed description: The image shows a musical score for Alto Saxophone. It consists of two staves. The first staff starts at measure 51 and contains a melodic line with three triplet markings (indicated by the number '3' above groups of three notes). The dynamics range from mezzo-piano (*mp*) to forte (*f*). The second staff starts at measure 54 and features a dynamic range from fortissimo-piano (*fp*) to fortissimo (*ff*). It includes the instruction 'senza rall.' (without slowing down) and features accents (>) over several notes. The key signature is one sharp (F#) and the time signature is not explicitly shown but appears to be 4/4 based on the notation.

Alto Sax.

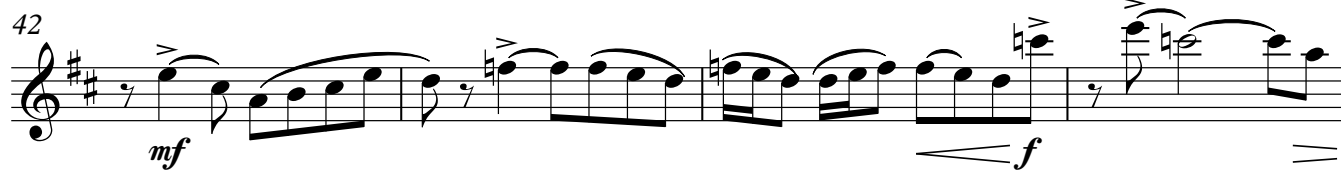
4 часть

5

Passionné ♩=66



Bossa Nova ♩ = ♩ précéd.



V.S.

6

Alto Sax.

50 *f* *mp* *f*

55 *mp* *mf* *mp* *cresc.*

60 *f* *mf*

65 *p* 3 3 3 3

68 *f* *ff* The end

Detailed description: The image shows a musical score for Alto Saxophone, measures 50 to 68. The key signature is two sharps (F# and C#), and the time signature is 4/4. The score is written on a single staff. Measure 50 starts with a dynamic of *f*, followed by a crescendo to *mp*, and then a decrescendo back to *f*. Measure 55 begins with *mp*, followed by a crescendo to *mf*, then a decrescendo back to *mp*, and finally a *cresc.* (crescendo) leading into measure 60. Measure 60 starts with *f*, followed by a decrescendo to *mf*. Measure 65 features a dynamic of *p* (piano) followed by four groups of triplets. Measure 68 begins with *f*, followed by a decrescendo to *ff* (fortissimo), and ends with the text "The end".